

Connecting technologies to work site FWOSP-Glass

Wearable Remote Operation Support Package



Hands-free communication for efficient operations.
Procedures are indicated on the display and recording work is performed by voice input.

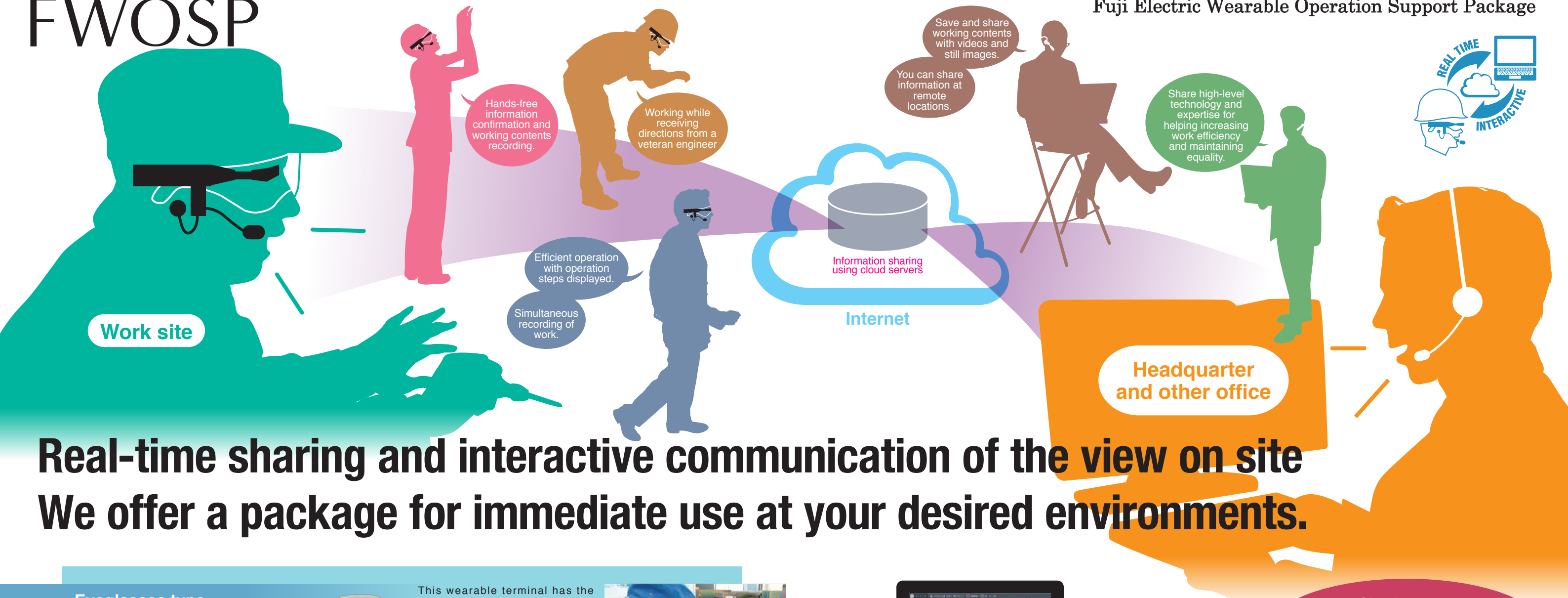
Real-time information sharing.
Work site and headquarters are connected over the Internet for close collaboration.

Practical use in various industries.
Wide-ranging application include production sites, logistics, medical care, and nursing care.

Transfer and accumulate technical knowledge.
Support education for beginning engineers, with video recording of their remote operations also possible.

FWOSP

Fuji Electric Wearable Operation Support Package



Real-time sharing and interactive communication of the view on site
We offer a package for immediate use at your desired environments.

Eyeglasses type wearable terminal

This wearable terminal has the Android OS installed. It can be mounted on eyeglasses or safety glasses, and can be operated hands free. Remote instructions can be given for the camera image of what the wearer is viewing, and video, conversations and work records using voice input can be shared using the cloud servers.

- Touch sensor**
You can operate with double taping and swiping.
- Operation buttons**
Operation buttons are positioned on the bottom surface. You can also operate with those buttons.
- Camera**
The camera captures what the wearer is viewing and this can be shared using the cloud servers.
- Microphone**
In addition to two-way conversation with headquarters, the microphone enables both operations and work recording by voice recognition.
- Earphone**
- Display**
It is easy to see a display even outdoor, and you can flexibly move the display to the best position for work.

※Safety glasses are optional.

What you can do with wearable terminal.

Before wearable adoption

- Filling in a table**
In order to change to another sheet, the work must be stopped And the possibility of entry mistakes also occurs....
- Handwritten numbers**

After adoption

- Recording of pass or fail by voice input**
OK NG
- Numerical entry by voice input**
Recording of work results
135 (numerical input)
- Recording operation by voice input**
Recording of video
Start of recording
- Recording of images**



Supervisors can give field workers technical instructions as they were on sites.

The headquarters at a remote location can view images of the work site in real time, while talking with the worker there or entering comments on the images and checking them together. This enables instructions and support to be provided closely as though the supervisor were also at the work site. Even non-experts can perform the work while watching the projected mirror images on the display, and this enables efficiency and quality to be maintained at the level of a skilled worker.

Contributing to business improvements in a wide range of fields

Applicable to a wide variety of fields such as providing work support at production sites, maintenance and servicing of various facilities, acquiring situational awareness in medical fields, information sharing between new and veteran caregivers in long-term care facilities, and offering customer-friendly services in theme parks.

Simultaneous conversations are enabled at three locations between headquarters and on-site terminals

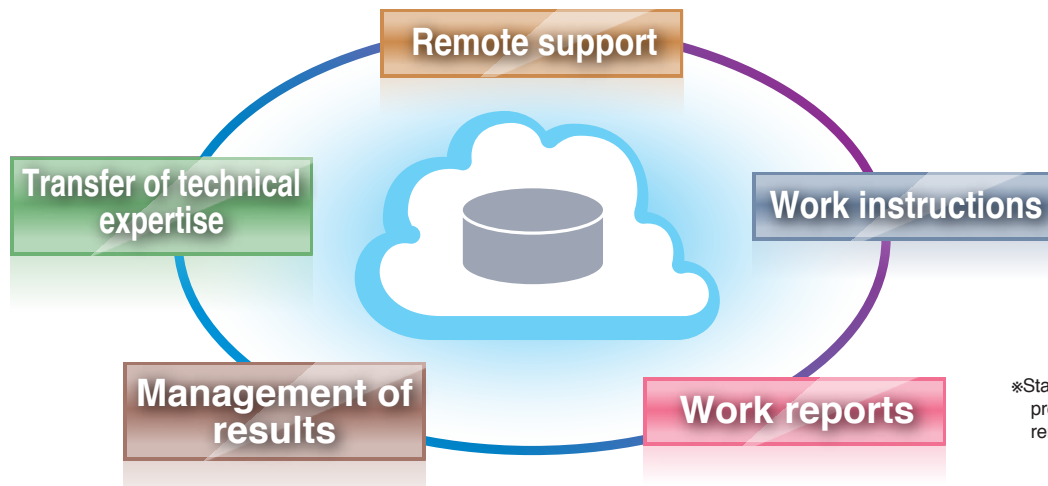


You can use this service with your existing PCs immediately with the Internet.
※A web browser (Google Chrome), speaker and microphone are required.

We offer a variety of options tailored to the customer's site environment

- For environments with remote support from guest operators—**
 - Guest operators can participate in remote support by using temporary passwords.
- For environments without Internet connections—**
 - Wearable terminal operations and pass-fail determinations using off-line voice recognition (premium version).
- For environments with recording other than numerical and pass-fail values is required—**
 - Work results can record with text or symbols by using optional voice input.

Wearable remote operation support package



Main FWOSP functions	Remote support	Work instructions	Work reports	Management of results	Transfer of technical expertise
On-site support from 3 headquarters locations	○			○	○
Bidirectional communications between headquarters and the work site	○			○	○
Information sharing on on-site conditions using on-site camera images	○			○	○
Recording of remote support (On/Off)	○			○	○
Communication via chat using registered phrases	○			○	○
◆ Remote support for temporary guests	○				○
Projection of work procedure content on the terminal		○	○		○
Operation support with images and voice		○	○		○
Creation of procedures in CSV I/O		○			○
Voice input to server storage		○		○	○
◆ Increase size of voice input characters and symbols			○	○	
Increase size of work instructions to three levels		○	○	○	
Call-up of work instructions using QR codes		○	○	○	
Zoomable closeups of work report photos			○	○	
Download of work result data			○	○	
Projection of past work results on the terminal☆			○	○	
Results history management during interruption☆			○	○	○
◆ Off-line voice input			○	○	○
Recording of work in mp4 image quality			○	○	○

The ◆ symbol indicates an option. The ☆ symbol indicates a pending patent. New function.

Hardware

Standard terminal	Included items	Options
Device name: Eyeglasses type wearable terminal Manufacturer: WESTUNITIS Co., Ltd. Model: InfoLinker Specification: OS: Android 4.2.2 Memory: RAM1GB, ROM8GB	Batteries: 5(Li-ion polymer 300mAh) Battery charger: 1 (charges 5 batteries at the same time) Neckband: 1 User manual: 1 Hands-free earphone with microphone: 1	<ul style="list-style-type: none"> Power supply adapter for connecting mobile battery Overglass mounter Silicone cover Mobile router

* Google Chrome and Android are registered trademarks of Google, Inc., registered in the United States and other countries.

* FWOSP is a registered trademark of Fuji Electric Co., Ltd. registered in Japan.

* The actual product may have precautions indicated for its use.

* The color of the actual product may vary slightly from the color printed in this catalog.

⚠ Safety precautions

- Before use, please read the "Operation Manuals" and "Specifications" thoroughly or consult us or the sales agent from which you purchased this equipment to ensure it is used correctly.
- This system must only be handled and operated by relevant specialists.

Fuji Electric Co., Ltd.

Gate City Ohsaki, East Tower, 11-2, Osaki 1-chome, Shinagawa-ku, Tokyo 141-0032, Japan
 Phone : +81-3-5435-7111

Internet address

Global : www.fujielectric.com

Japan : www.fujielectric.co.jp

Information in this catalog is subject to change without notice.

2018-12(L2018f/K2015)1FOLS Printed in Japan