
Chapter 1

Features

Contents	Page
1 GBT-IPMs Characteristics	1-2
2 IPM Characteristics by Series	1-4
3 Definition of Type Name and Lot No.....	1-6
4 Lineup.....	1-7
5 Outline Drawings	1-8

1 GBT-IPMs Characteristics

An intelligent power module (IPM) has the following characteristics when compared with a combination of IGBT modules and drive circuits.

1.1 Built-in drive circuit

- IGBT gate drives operate under optimal conditions.
- Since the wiring length between the internal drive circuit and IGBT is short and the impedance of the drive circuit is low, no reverse bias DC source is required.
- The R-series IPM (R-IPM) devices require four control power sources, one source on the lower arm side, and three individual sources on the upper arm side with proper circuit isolation.

1.2 Built-in protection circuits

- The following built-in protection circuits are included in the R-IPM devices:
 - (OC): Overcurrent protection
 - (SC): Short-circuit protection
 - (UV): Undervoltage protection for control power source
 - (OH): Overheating protection
 - (ALM): External alarm output
- The OC and SC protection circuits provide protection against IGBT damage caused by overcurrent or load short-circuits. These circuits monitor the collector current using detection elements incorporated in each IGBT and thus can minimize the possibility of severe damage to the IGBT. They also protect against arm short-circuits.^{*1}
- The UV protection circuit is in all of the IGBT drive circuits. This circuit monitors the Vcc supply voltage level against the IGBT drive Vin.
- The OH protection circuit protects the IGBT and FWD from overheating. It also monitors the insulating substrate's temperature with temperature detection elements installed on the insulating substrates inside the IPM.
(Case temperature overheating protection: TcOH)^{*2}

- Additionally, each IGBT chip contains a temperature detection element on the IGBT die, which allows the OH to act rapidly when abnormally high chip temperatures are detected. (Junction temperature overheating protection: TjOH)
- The ALM circuit outputs an alarm signal to outside of the IPM, making it possible to shutdown the system reliably by outputting the alarm signal to the microcontroller which controls IPM when the circuit detects an abnormal condition (specified above).^{*2}

^{*1} The N-line shunt resistance method is used for overcurrent detection of small-capacity types.

^{*2} Refer to Chapter 3 “Description of Functions” for the protective functions of each IPM.

1.3 Built-in brake circuit (7 in 1 IPM)

- For a motor control inverter application, a brake circuit can be built to protect bus overvoltage by just adding a power dissipating resistor.
- The drive circuits and protection circuits are included in the brake IGBT in the same way as inverter IGBTs.

2 IPM Characteristics by Series

2.1 R-IPM, R-IPM3 series

2.1.1 Small-capacity types

A lineup of small-capacity types with 15 to 30 A for 600 V systems and 15 A for 1200 V systems is available. (P617, P619 package)

- P617 package products are a type without a copper base, while P619 package products are a type with a copper base, which further improves the heat radiation ability.
- The control input terminals have a standard pitch of 2.54 mm.
- The shape of the main terminals is the Faston shape, and as the height is the same as that of the control input terminals, connection by the same printed boards is possible with the soldering method as well as with the connector method.
- By improvement of the trade-off between $V_{ce(sat)}$ and switching loss, the total loss has been improved.
- The chip is protected from abnormal heating by IGBT chip overheating protection.

2.1.2 Medium-capacity types (alarm output only for the lower arm)

A lineup of medium-capacity types with 50 to 150 A for 600 V systems and 25 to 75 A for 1200 V systems is available. (P610, P611 package)

- The control input terminals have a standard pitch of 2.54 mm, they are arranged in one line, and connection is possible with one connector for general use. A guide pin makes insertion of the connector for the printed board easy.
- The main power source inputs (P, N), the brake output (B), and the output terminals (U, V, W) are arranged close to each other, and the main wiring is a simple package construction.
- As the main terminals are M5 screws, large currents can be connected securely.
- The screw diameter for connection to the heat sink is M5, the same as for the main terminals.
- As all electrical connections are made by screws or connectors, soldering is not required and removal is easy.
- By improvement of the trade-off between $V_{ce(sat)}$ and switching loss, the total loss has been improved.
- The chip is protected from abnormal heating by IGBT chip overheating protection.^{*3}

^{*3}There is no alarm output from the upper arm side.

2.1.3 Medium-capacity types (with upper arm alarm output function)

A lineup of medium-capacity types with 50 to 150 A for 600 V systems and 25 to 75 A for 1200 V systems is available. (P621 package)

- OC, SC, UV, and TjOH alarm signals can be output from the upper arm. This allows secure protection against trouble from ground faults, etc.^{*4}
- As the main terminals are M5 screws, large currents can be connected securely.
- The screw diameter for connection to the heat sink is M5, the same as for the main terminals.

- As all electrical connections are made by screws or connectors, soldering is not required and removal is easy.
- By improvement of the trade-off between $V_{ce(sat)}$ and switching loss, the total loss has been improved.
- The chip is protected from abnormal heating by IGBT chip overheating protection.

^{*4} The TcOH alarm is output only from the lower arm.

2.1.4 Large-capacity types (alarm output only for the lower arm)

A lineup of large-capacity types with 200 to 300 A for 600 V systems and 100 to 150 A for 1200 V systems is available. (P612 package)

- The layout of the control input terminals is the same as for the medium-capacity standard package, and correspondence is possible with one connector type.
- The main power source inputs (P, N), the brake output (B), and the output terminals (U, V, W) are arranged close to each other, and the main wiring is a simple package construction.
- As the main terminals are M5 screws, large currents can be connected securely.
- The screw diameter for connection to the heat sink is M5, the same as for the main terminals.
- As all electrical connections are made by screws or connectors, soldering is not required and removal is easy.
- By improvement of the trade-off between $V_{ce(sat)}$ and switching loss, the total loss has been improved.
- The chip is protected from abnormal heating by IGBT chip overheating protection.^{*5}

^{*5} There is no alarm output from the upper arm side.

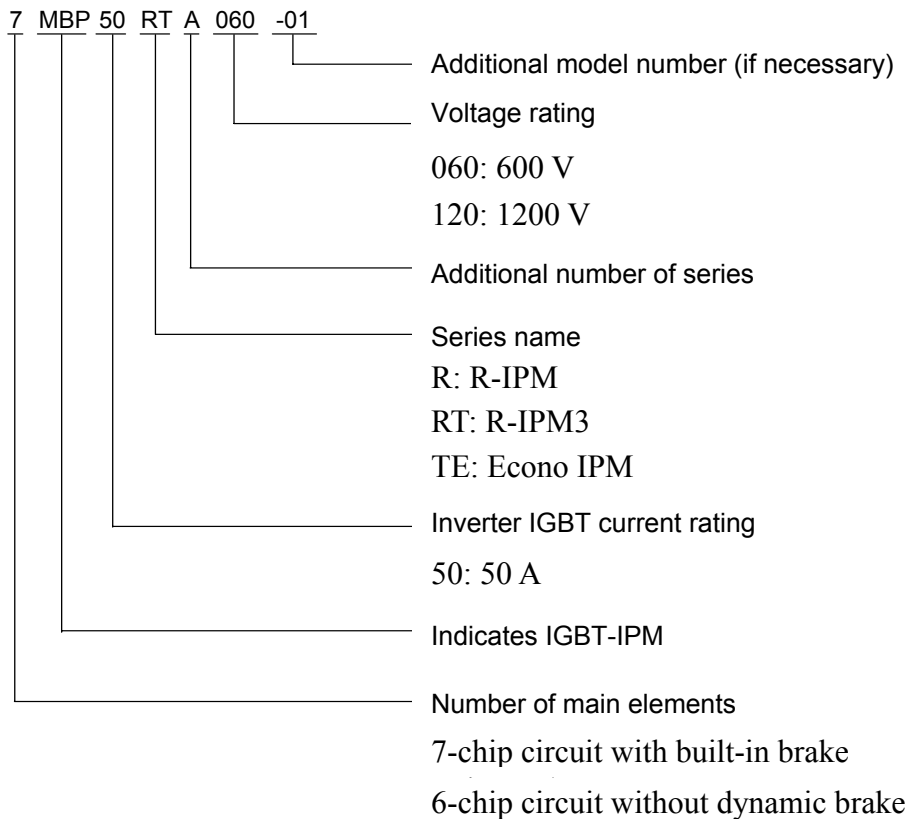
2.2 Econo IPM series

The Econo IPM series is a lineup with 50 to 150 A for 600 V systems and 25 to 75 A for 1200 V systems. (P622 package)

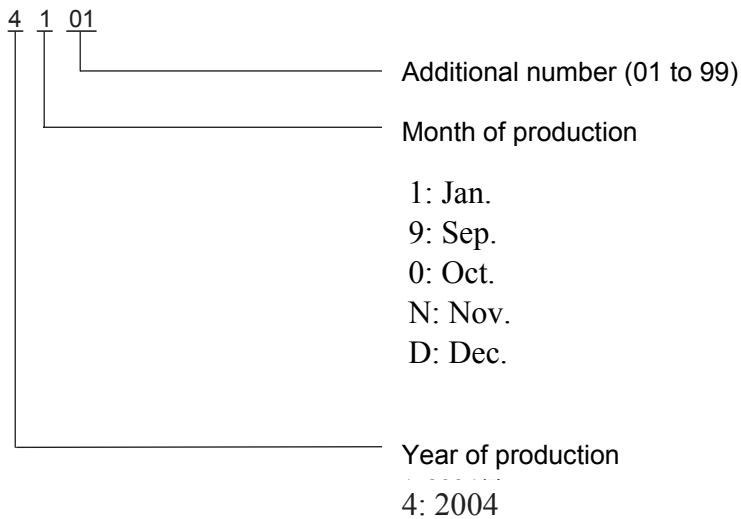
- In comparison with the medium-capacity types, the mounting area has been reduced by approximately 30% and the mass has been reduced by approximately 40%, contributing to reduction of the device size.
- As the height is the same as that of Econo DIMs (Econo Diode Modules), connection is possible with the same printed circuit boards.
- OC, SC, UV, and TjOH alarm signals can be output from the upper arm. This makes secure protection against trouble from ground faults etc. possible.
- The chip is protected from abnormal heating by IGBT chip overheating protection.

3 Definition of Type Name and Lot No.

• Type name



• Lot No.



4 Lineup

600 V system, 15 to 75 A

	15A	20A	30A	50A	75A
R-IPM	6MBP15RH060	6MBP20RH060	6MBP30RH060	6MBP50RA060 7MBP50RA060	6MBP75RA060 7MBP75RA060
R-IPM3	–	6MBP20RTA060	–	6MBP50RTB060 7MBP50RTB060 6MBP50RTJ060 7MBP50RTJ060	6MBP75RTB060 7MBP75RTB060 6MBP75RTJ060 7MBP75RTJ060
Econo IPM	–	–	–	6MBP50TEA060 7MBP50TEA060	6MBP75TEA060 7MBP75TEA060

600 V system, 100 to 300 A

	100A	150A	200A	300A
R-IPM	6MBP100RA060 7MBP100RA060	6MBP150RA060 7MBP150RA060	6MBP200RA060 7MBP200RA060	6MBP300RA060 7MBP300RA060
R-IPM3	6MBP100RTB060 7MBP100RTB060 6MBP100RTJ060 7MBP100RTJ060	6MBP150RTB060 7MBP150RTB060 6MBP150RTJ060 7MBP150RTJ060	–	–
Econo IPM	6MBP100TEA060 7MBP100TEA060	6MBP150TEA060 7MBP150TEA060	–	–

1200 V system

	15A	25A	50A	75A	100A	150A
R-IPM	6MBP15RA120	6MBP25RA120 7MBP25RA120 6MBP25RJ120 7MBP25RJ120	6MBP50RA120 7MBP50RA120 6MBP50RJ120 7MBP50RJ120	6MBP75RA120 7MBP75RA120 6MBP75RJ120 7MBP75RJ120	6MBP100RA120 7MBP100RA120	6MBP150RA120 7MBP150RA120
Econo IPM	–	6MBP25TEA120 7MBP25TEA120	6MBP50TEA120 7 MBP50TEA120	6MBP75TEA120 7MBP75TEA120	–	–

5 Outline Drawings

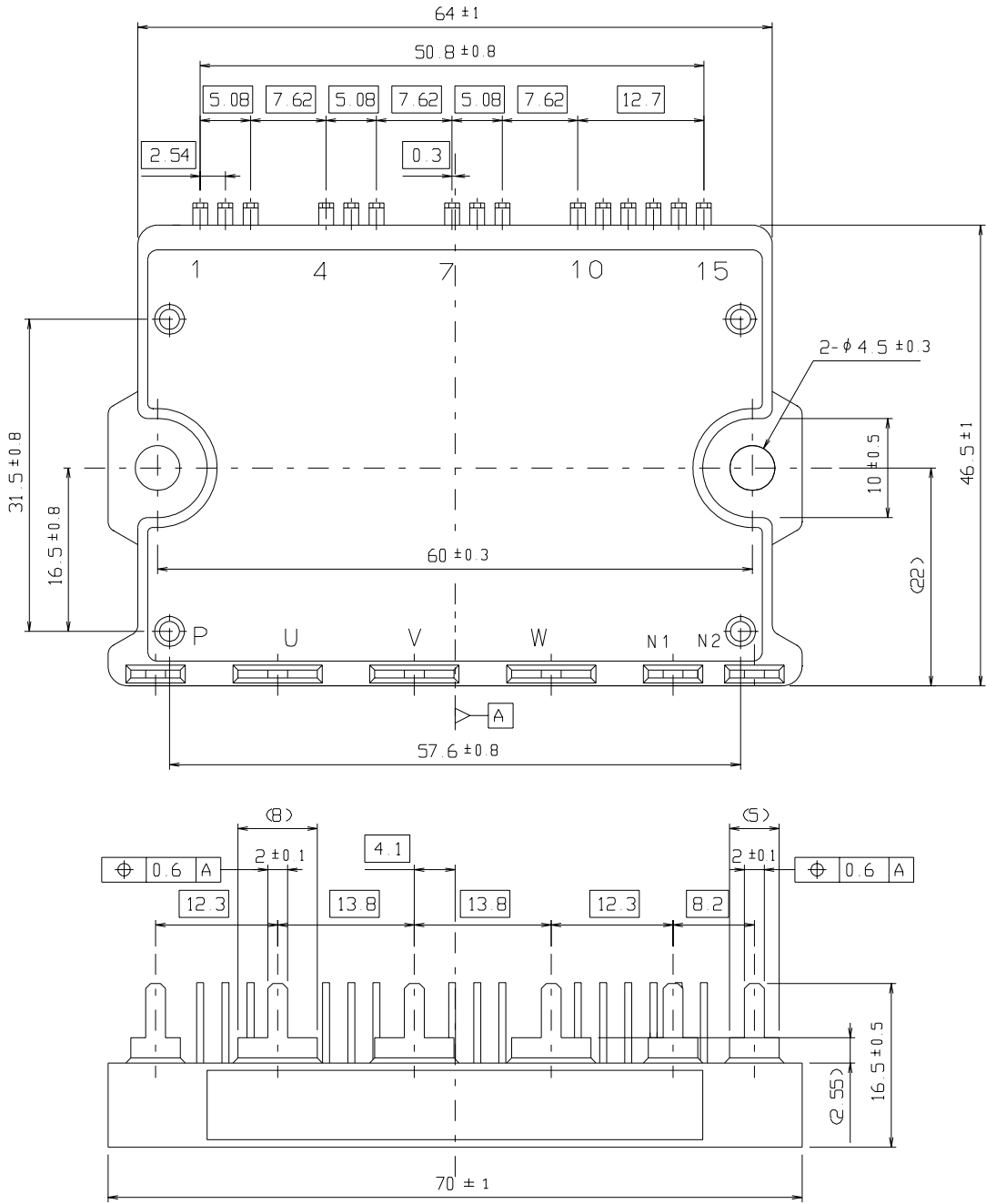


Fig. 1-1 Outline Drawing (P617)

Type name: 6MBP15RH060, 6MBP20RH060, 6MBP30RH060

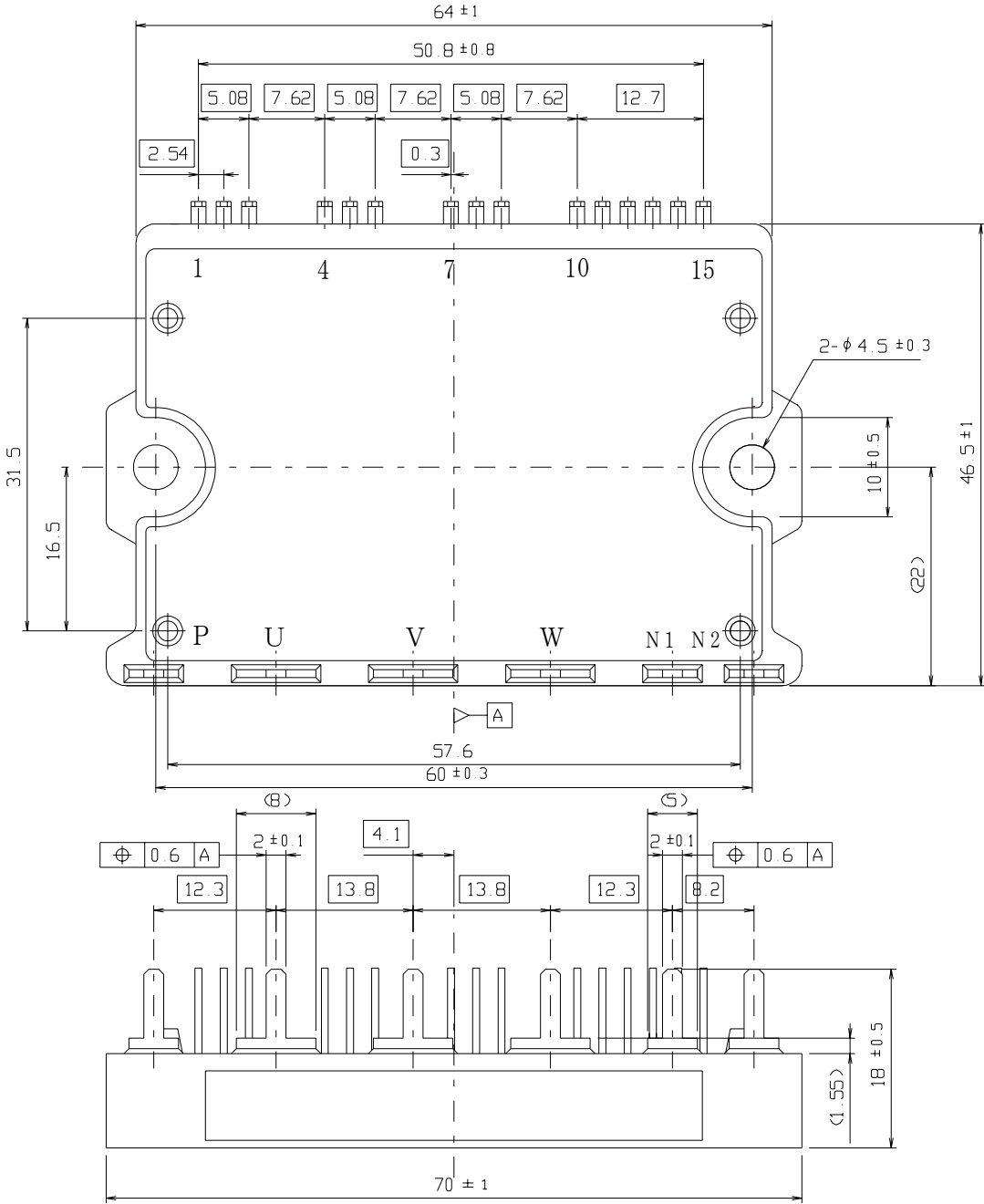


Fig. 1-2 Outline Drawing (P619)

Type name: 6MBP20RTA060, 6MBP15RA120

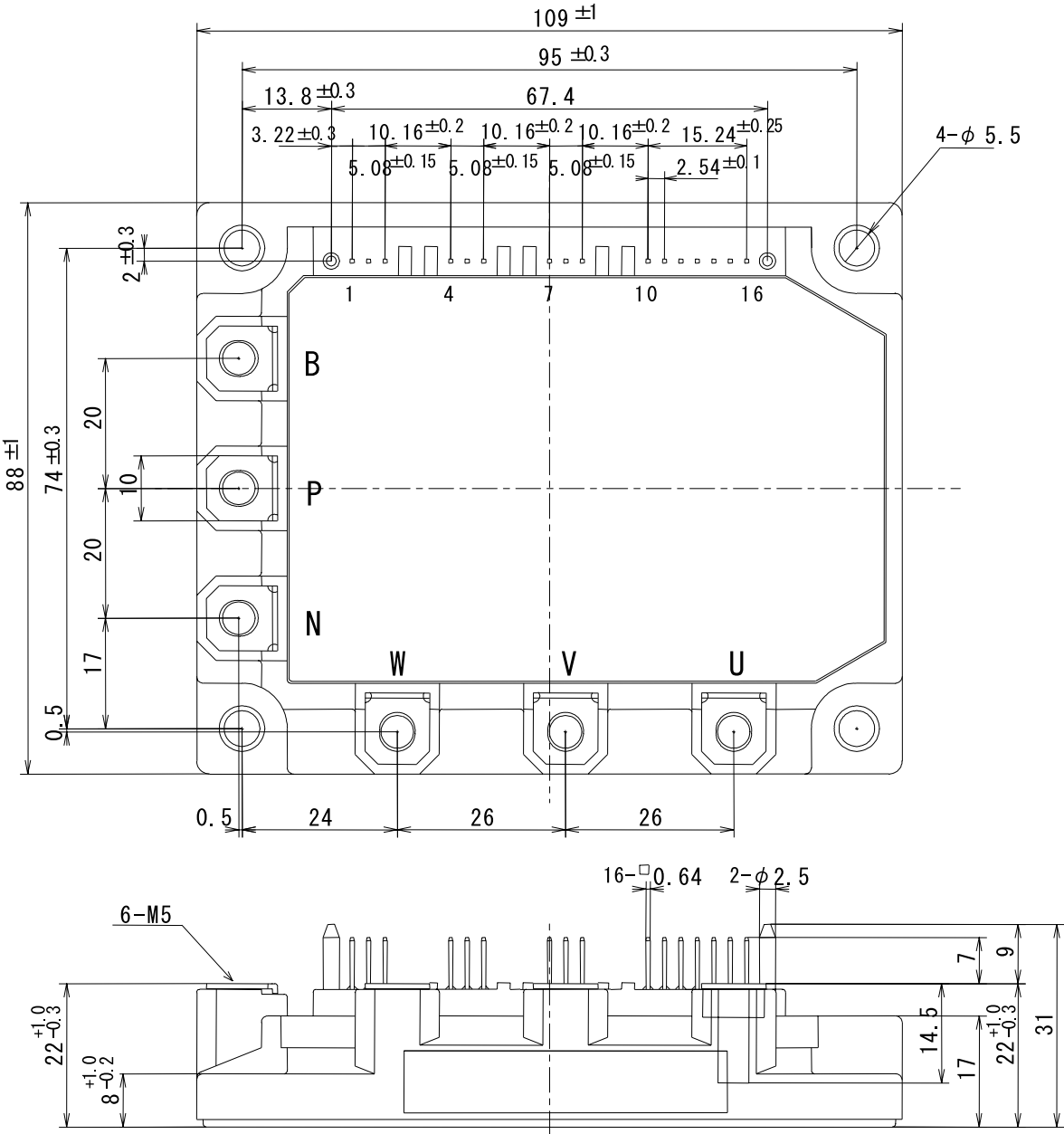


Fig. 1-3 Outline Drawing (P610)

Type name: 6MBP50RA060, 6MBP75RA060, 6MBP50RTB060, 6MBP75RTB060, 6MBP25RA120
 7MBP50RA060, 7MBP75RA060, 7MBP50RTB060, 7 MBP75RTB060, 7MBP25RA120

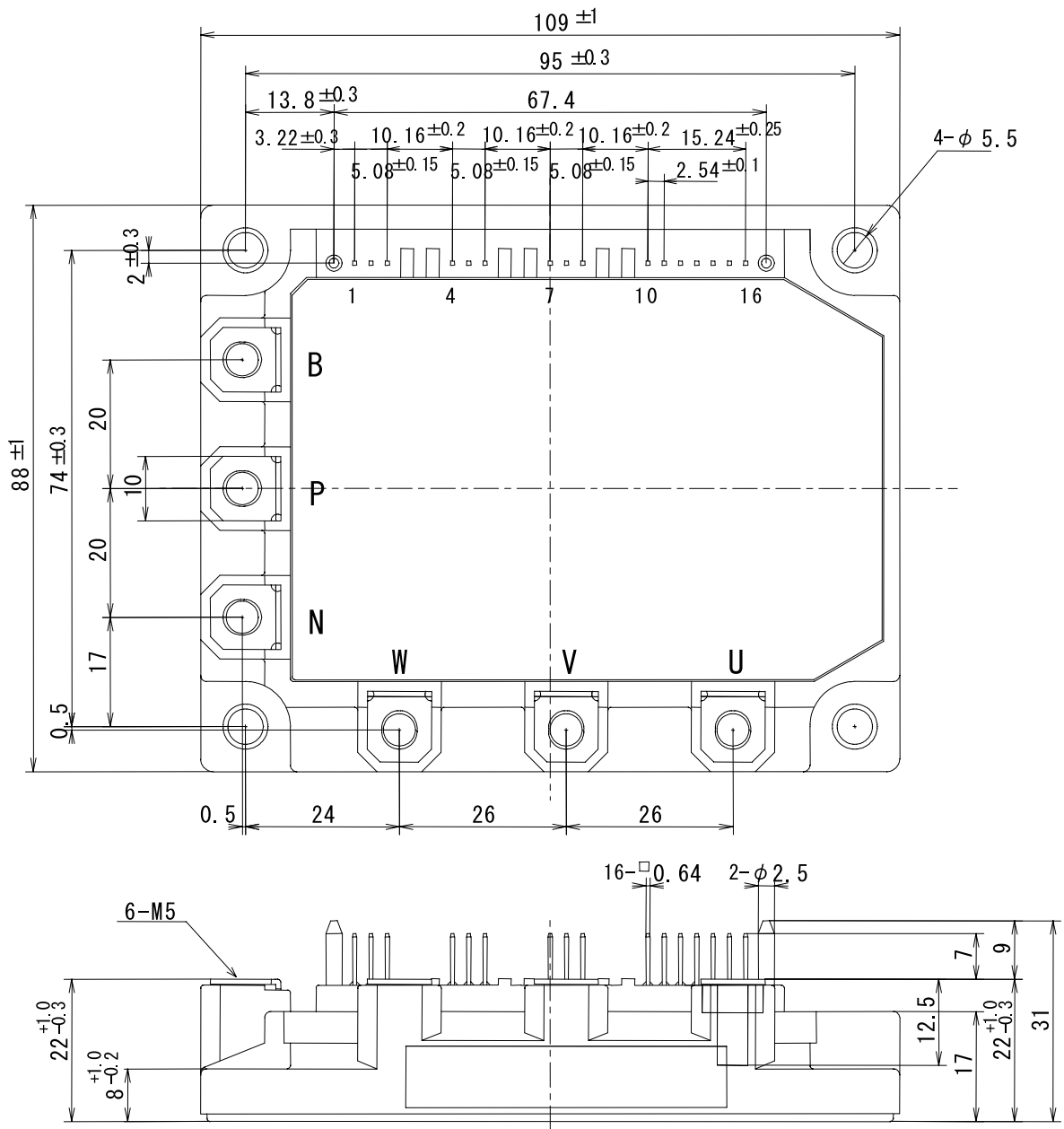


Fig. 1-4 Outline Drawing (P611)

Type name: 6MBP100RA060, 6MBP150RA060, 6MBP100RTB060, 6MBP150RTB060, 6MBP50RA120, 6MBP75RA120
 7MBP100RA060, 7MBP150RA060, 7MBP100RTB060, 7MBP150RTB060, 7MBP50RA120, 7MBP75RA120

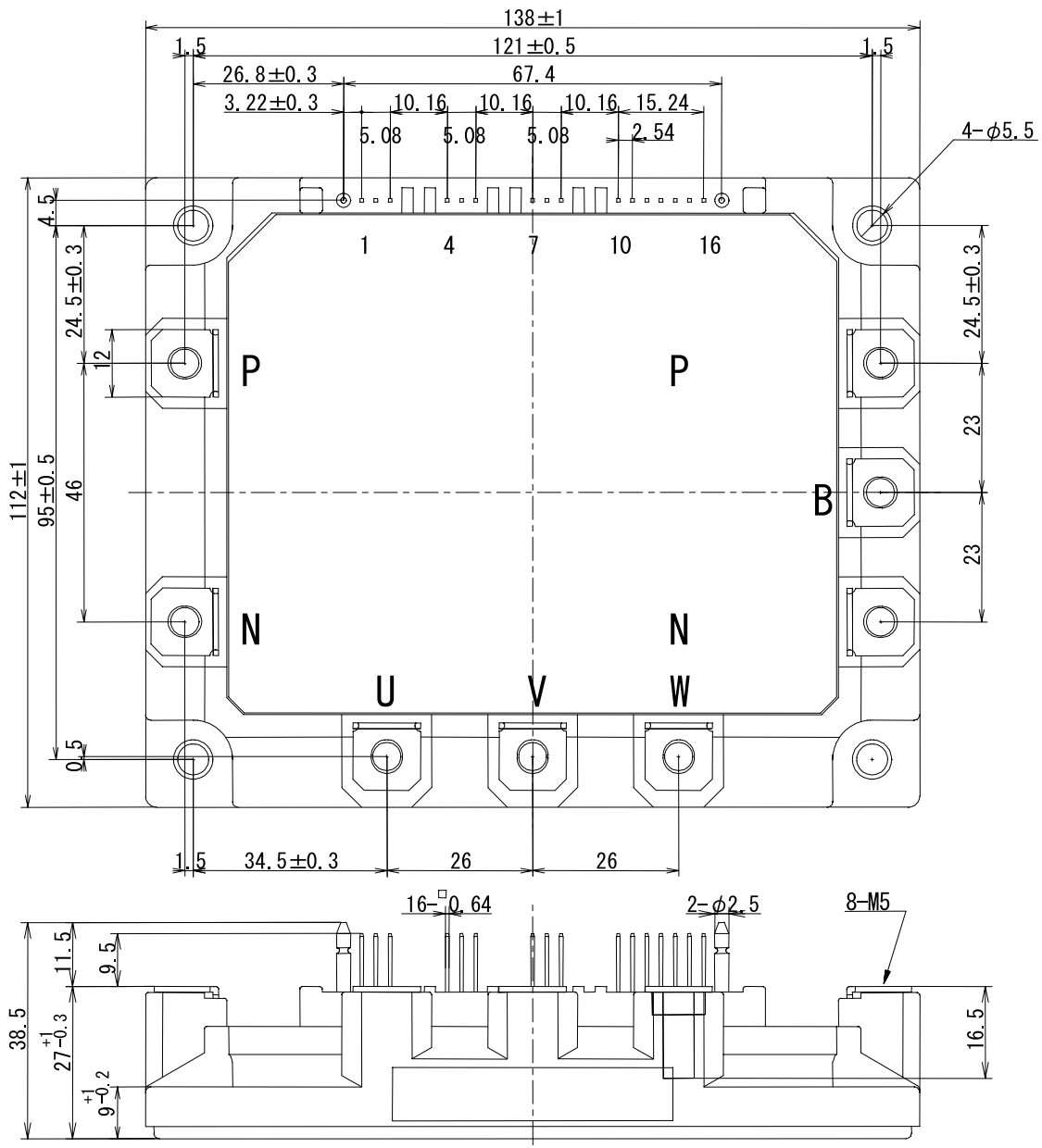


Fig. 1-5 Outline Drawing (P612)

Type name: 6MBP200RA060, 6MBP300RA060, 6MBP100RA120, 6MBP150RA120
 7MBP200RA060, 7MBP300RA060, 7MBP100RA120, 7MBP150RA120

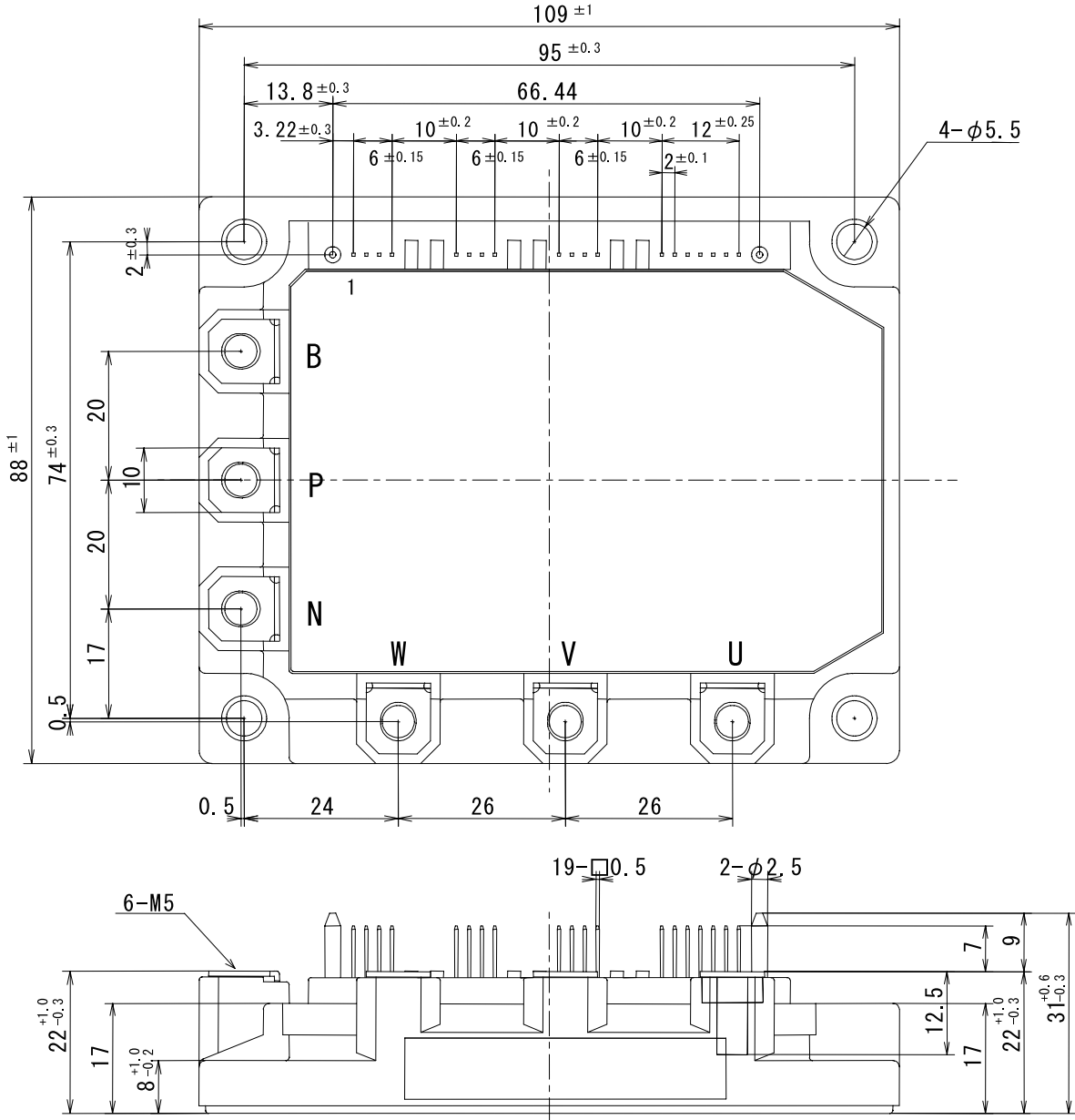


Fig. 1-6 Outline Drawing (P621)

Type name: 6MBP50RTJ060, 6MBP75RTJ060, 6MBP100RTJ060, 6MBP150RTJ060, 6MBP25RJ120, 6MBP50RJ120, 6MBP75RJ120
 7MBP50RTJ060, 7MBP75RTJ060, 7MBP100RTJ060, 7MBP150RTJ060, 7MBP25RJ120, 7MBP50RJ120, 7MBP75RJ120

WARNING

1. This Catalog contains the product specifications, characteristics, data, materials, and structures as of February 2004.
The contents are subject to change without notice for specification changes or other reasons. When using a product listed in this Catalog, be sure to obtain the latest specifications.
2. All applications described in this Catalog exemplify the use of Fuji's products for your reference only. No right or license, either express or implied, under any patent, copyright, trade secret or other intellectual property right owned by Fuji Electric Device Technology Co., Ltd. is (or shall be deemed) granted. Fuji Electric Device Technology Co., Ltd. makes no representation or warranty, whether express or implied, relating to the infringement or alleged infringement of other's intellectual property rights which may arise from the use of the applications described herein.
3. Although Fuji Electric Device Technology Co., Ltd. is enhancing product quality and reliability, a small percentage of semiconductor products may become faulty. When using Fuji Electric semiconductor products in your equipment, you are requested to take adequate safety measures to prevent the equipment from causing a physical injury, fire, or other problem if any of the products become faulty. It is recommended to make your design fail-safe, flame retardant, and free of malfunction.
4. The products introduced in this Catalog are intended for use in the following electronic and electrical equipment which has normal reliability requirements.
 - Computers
 - OA equipment
 - Communications equipment (terminal devices)
 - Measurement equipment
 - Machine tools
 - Audiovisual equipment
 - Electrical home appliances
 - Personal equipment
 - Industrial robots etc.
5. If you need to use a product in this Catalog for equipment requiring higher reliability than normal, such as for the equipment listed below, it is imperative to contact Fuji Electric Device Technology Co., Ltd. to obtain prior approval. When using these products for such equipment, take adequate measures such as a backup system to prevent the equipment from malfunctioning even if a Fuji's product incorporated in the equipment becomes faulty.
 - Transportation equipment (mounted on cars and ships)
 - Trunk communications equipment
 - Traffic-signal control equipment
 - Gas leakage detectors with an auto-shut-off feature
 - Emergency equipment for responding to disasters and anti-burglary devices
 - Safety devices
6. Do not use products in this Catalog for the equipment requiring strict reliability such as (without limitation)
 - Space equipment
 - Aeronautic equipment
 - Nuclear control equipment
 - Submarine repeater equipment
 - Medical equipment
7. Copyright © 1996-2004 by Fuji Electric Device Technology Co., Ltd. All rights reserved.
No part of this Catalog may be reproduced in any form or by any means without the express permission of Fuji Electric Device Technology Co., Ltd.
8. If you have any question about any portion in this Catalog, ask Fuji Electric Device Technology Co., Ltd. or its sales agents before using the product.
Neither Fuji Electric Device Technology Co., Ltd. nor its agents shall be liable for any injury caused by any use of the products not in accordance with instructions set forth herein.