

List of Officers (As of July 1, 2017)

Directors



Michihiro Kitazawa
President and Chairman of the Board of Directors



Kenzo Sugai
Representative Director



Toshihito Tamba
Outside Director
Chairman & Co-CEO,
Representative Director, Tokyo
Century Corporation



Naomi Tachikawa
Outside Director
Senior Adviser, TOTOKU
ELECTRIC CO., LTD.



Yoshitsugu Hayashi
Outside Director
Professor, Institute of Science
and Technology Research,
Chubu University



Michio Abe
Director



Junichi Arai
Director



Masatsugu Tomotaka
Director

Auditors



Yoshio Okuno
Standing Auditor



Junichi Matsumoto
Standing Auditor



Yoshiki Sato
Outside Auditor
Chairman and Representative
Director, Asahi Mutual Life
Insurance Company



Akiko Kimura
Outside Auditor
Of Counsel, Anderson Mori &
Tomotsune



Tetsuo Hiramatsu
Outside Auditor
President, NIPPON
TOCHI-TATEMONO Co., Ltd.

Executive Officers (As of July 1, 2017)

President	Michihiro Kitazawa	General Management
Executive Vice President	Kenzo Sugai	Assistant to the President, Corporate General Manager, Sales Group
Executive Officers	Michio Abe	Corporate General Manager, Production & Procurement Group
	Kuniaki Yanagisawa	Corporate General Manager, Electronic Devices Business Group
Managing Executive Officers	Junichi Arai	Corporate General Manager, Corporate Management Planning Headquarters, General Manager, Export Administration Office, In charge of compliance management and crisis management
	Masatsugu Tomotaka	Corporate General Manager, Power Electronics Systems Business Group
Executive Officers	Takeshi Kadoshima	General Manager, Human Resources and General Affairs Office
	Masahiro Fujiwara	Corporate General Manager, Power and New Energy Business Group
	Kenji Goto	Deputy Corporate General Manager, Sales Group
	Yasuhiro Takahashi	Corporate General Manager, Food and Beverage Distribution Business Group
	Susumu Shinmura	Deputy Corporate General Manager, Sales Group; General Manager, Kansai Branch
	Masahiro Morimoto	President & Representative Director, Fuji Electric FA Components & Systems Co., Ltd.
	Toru Housen	Deputy Corporate General Manager, Electronic Devices Business Group
	Shiro Kondo	Corporate General Manager, Corporate R&D Headquarters

Note: Please refer to our website for each officer's brief history.

Corporate Data

Company Information (As of March 31, 2017)

Company Name	FUJI ELECTRIC CO., LTD.
Established	August 29, 1923
Head Office	1-1, Tanabeshinden, Kawasaki-ku, Kawasaki-shi 210-9530, Japan
Head Office Business Address	Gate City Ohsaki, East Tower, 11-2, Osaki 1-chome, Shinagawa-ku, Tokyo 141-0032, Japan
Capital Stock	¥47.6 billion
Employees (Consolidated)	26,503 (Domestic 17,716, Overseas 8,787)
Net Sales (Consolidated)	¥837.8 billion (Year ended March 31, 2017)
Stock Code	6504

Stock Information (As of March 31, 2017)

Issued and Outstanding Shares	746,484,957
Number of Shareholders	36,913
Major Shareholders	

Shareholders' names	Number of shares (1,000s)	Voting rights (%)
FUJITSU LIMITED	74,333	10.41
The Master Trust Bank of Japan, Ltd. (Trust Account)	47,456	6.64
Japan Trustee Services Bank, Ltd. (Trust Account)	46,726	6.54
Mizuho Bank, Ltd.	22,254	3.12
Asahi Mutual Life Insurance Company	19,775	2.77
FANUC CORPORATION	13,421	1.88
Japan Trustee Services Bank, Ltd. (Trust Account 5)	11,070	1.55
FURUKAWA CO., LTD.	11,025	1.54
Furukawa Electric Co., Ltd.	8,738	1.22
JP MORGAN CHASE BANK 380634	8,571	1.20

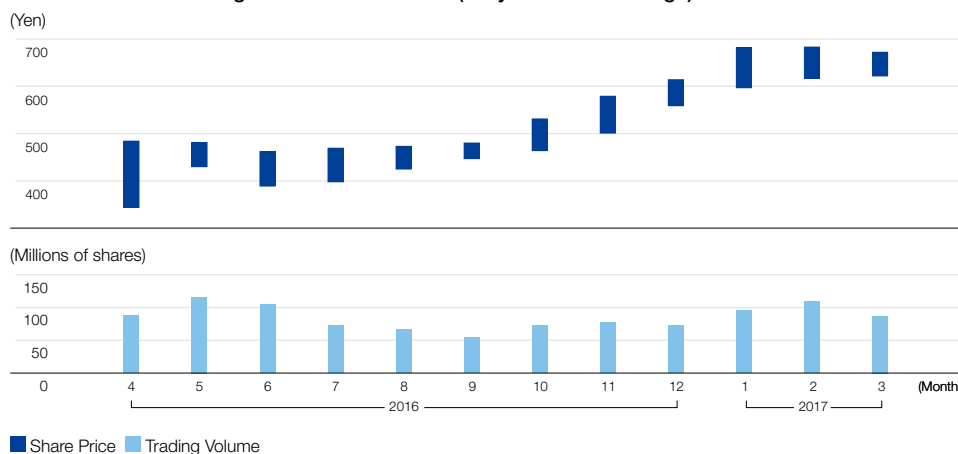
Notes: 1. Treasury stock of 32,158,991 shares is excluded from the above list of top 10 shareholders.
2. The ratio of shareholding is calculated by deducting the number of treasury stock from the total number of shares outstanding based on the provisions of the Ordinance for Enforcement of the Companies Act.

Share Distribution by Shareholder Type

Type	Number of shareholders	Number of shares	Holding (%)
Financial institutions / securities firms	117	275,152,680	36.86
Other domestic corporations	457	125,810,276	16.85
Foreign corporations	535	224,226,344	30.04
Individuals and others	35,804	121,295,657	16.25
Total	36,913	746,484,957	100.00

Note: "Individuals and others" includes treasury stock.

Share Price and Trading Volume Fluctuations (Tokyo Stock Exchange)



Consolidated Subsidiaries and Equity-Method Affiliates (As of July 1, 2017)

Consolidated Subsidiaries (Domestic): 23

Fuji Electric FA Components & Systems Co., Ltd.	Shinshu Fuji Electric Co., Ltd.
Fuji Furukawa Engineering & Construction Co., Ltd.*1	Hoei Plastics Co., Ltd.
Fuji Electric IT Solutions Co., Ltd.	Mie Fuji Co., Ltd.
Hoei Denki Co., Ltd.	Fuji Electric Retail Service Co., Ltd.
Hokkaido Fuji Electric Co., Ltd.	Fuji Electric F-Tech Co., Ltd.
Fuji Electric Meter Co., Ltd.	Fuji Electric Finance and Accounting Support Co., Ltd.
Fuji IT Co., Ltd.	Fuji Electric Information Technology Center Co., Ltd.
Ibaraki Fuji Co., Ltd.	Fuji Office and Life Service Co., Ltd.
Hakko Electronics Co., Ltd.	Fuji Festec Co., Ltd.
Fuji Electric FA Service Co., Ltd.	Fuji Electric Technica Co., Ltd.
Fuji Electric Power Semiconductor Co., Ltd.	Chichibu Fuji Co., Ltd.
Fuji Electric Tsugaru Semiconductor Co., Ltd.	

*1 Fuji Furukawa Engineering & Construction Co., Ltd., is listed on the second section of the Tokyo Stock Exchange.

Equity-Method Affiliates (Domestic): 3

METAWATER Co., Ltd.*2	Fuji Furmanite Co., Ltd.
METAWATER SERVICE Co., Ltd.	

*2 METAWATER Co., Ltd., is listed on the first section of the Tokyo Stock Exchange.

Consolidated Subsidiaries (Overseas): 47

Fuji Electric Asia Pacific Pte. Ltd.	Fuji Electric Dalian Co., Ltd.
Fuji SMBE Pte. Ltd.	Fuji Electric Motor (Dalian) Co., Ltd.
Fuji Electric (Thailand) Co., Ltd.	Dalian Fuji Bingshan Vending Machine Co., Ltd.
Fuji Electric Manufacturing (Thailand) Co., Ltd.	Dalian Fuji Bingshan Vending Machine Sales Co., Ltd.
Fuji Tusco Co., Ltd.	Fuji Electric (Hangzhou) Software Co., Ltd.
PT Fuji Electric Indonesia	Fuji Electric FA (Asia) Co., Ltd.
Fuji Electric India Private Ltd.	Fuji Electric Hong Kong Co., Ltd.
Fuji Electric Philippines, Inc.	Hoei Hong Kong Co., Ltd.
Fuji Electric (Malaysia) Sdn. Bhd.	Fuji Electric Taiwan Co., Ltd.
Fuji Electric (China) Co., Ltd.	Fuji Electric Korea Co., Ltd.
Shanghai Electric Fuji Electric Power Technology (Wuxi) Co., Ltd.	Fuji Electric Corp. of America
Wuxi Fuji Electric FA Co., Ltd.	Fuji Electric Europe GmbH
Fuji Electric (Changshu) Co., Ltd.	Fuji Electric France S.A.S.
Fuji Electric (Zhuhai) Co., Ltd.	Reliable Turbine Services LLC
Fuji Electric (Shenzhen) Co., Ltd.	Fuji SEMEC Inc.

Including the 30 above-listed companies, 47 companies.

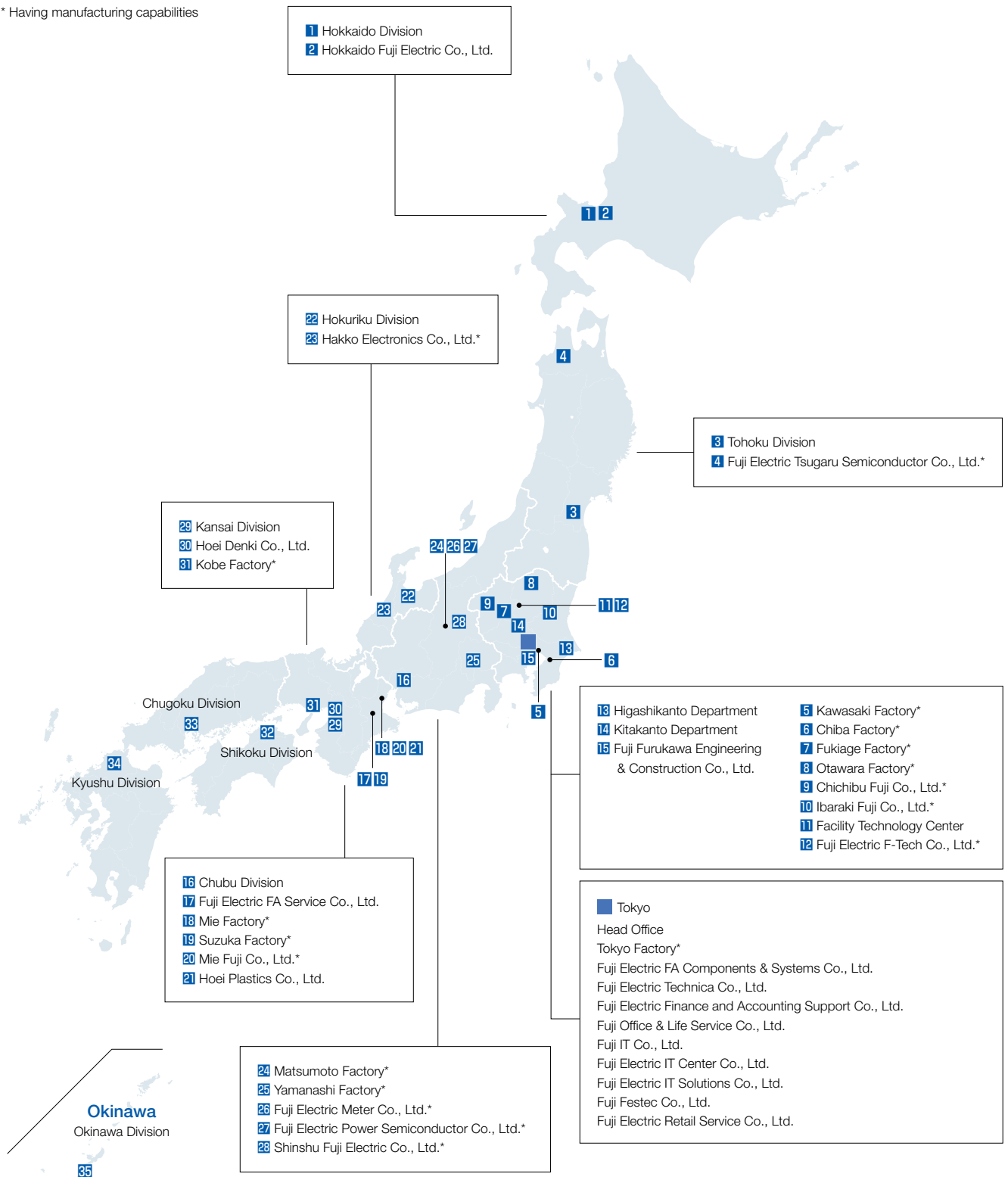
Equity-Method Affiliate (Overseas): 1

FUJI FURUKAWA E&C (Thailand) Co., Ltd.
--

Global Network

(As of July 2017)

* Having manufacturing capabilities

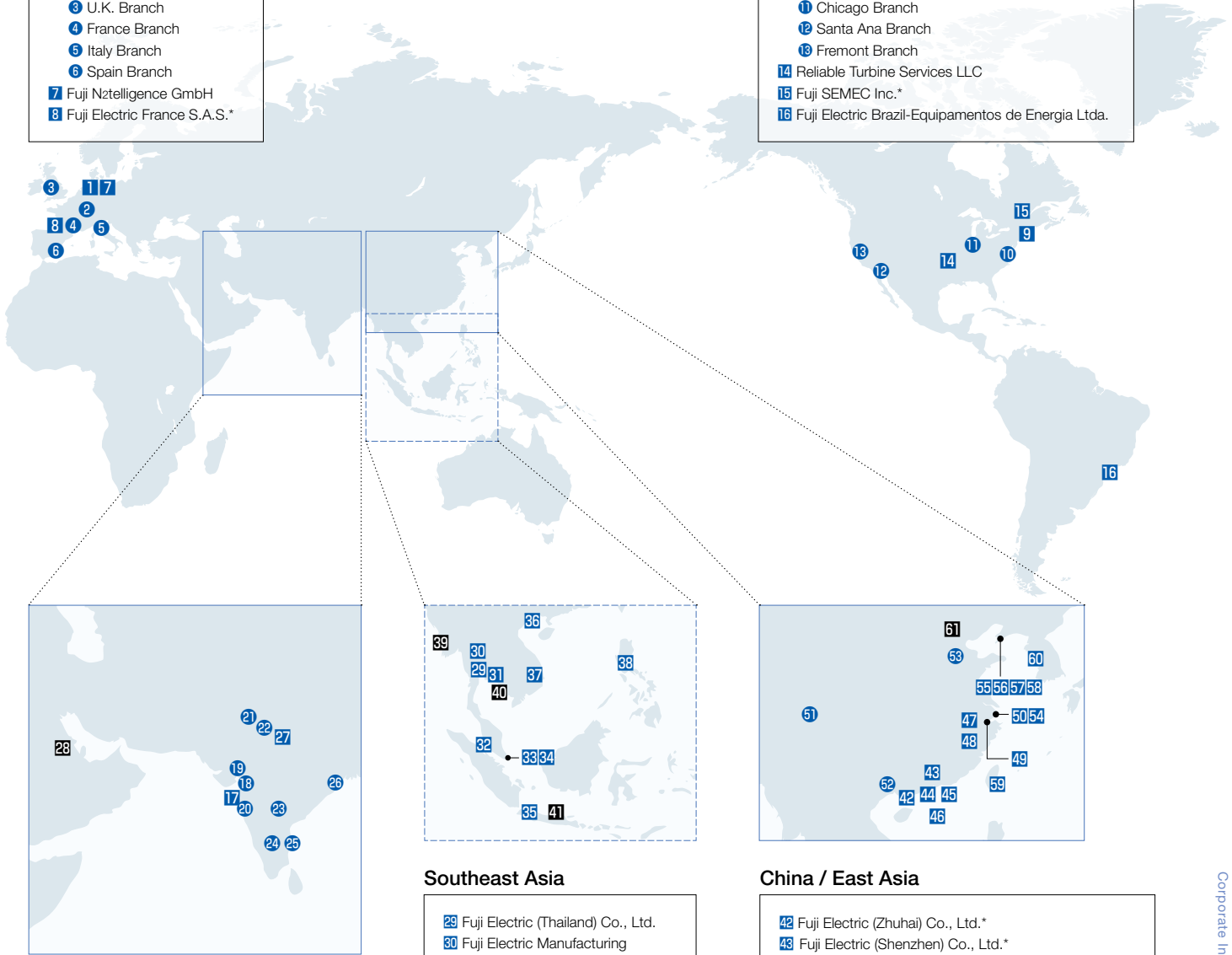


Europe

- 1 Fuji Electric Europe GmbH*
- 2 Switzerland Branch
- 3 U.K. Branch
- 4 France Branch
- 5 Italy Branch
- 6 Spain Branch
- 7 Fuji Nztelligence GmbH
- 8 Fuji Electric France S.A.S.*

Americas

- 9 Fuji Electric Corp. of America
- 10 Virginia Factory*
- 11 Chicago Branch
- 12 Santa Ana Branch
- 13 Fremont Branch
- 14 Reliable Turbine Services LLC
- 15 Fuji SEMEC Inc.*
- 16 Fuji Electric Brazil-Equipamentos de Energia Ltda.



South Asia / Middle East

- 17 Fuji Electric India Private Ltd.
- 18 India Factory*
- 19 Ahmedabad Branch
- 20 Pune Branch
- 21 Chandigarh Branch
- 22 Delhi Branch
- 23 Hyderabad Branch
- 24 Bangalore Branch
- 25 Chennai Branch
- 26 Kolkata Branch
- 27 Fuji Gemco Private Limited*
- 28 Middle East Branch

Southeast Asia

- 29 Fuji Electric (Thailand) Co., Ltd.
- 30 Fuji Electric Manufacturing (Thailand) Co., Ltd.*
- 31 Fuji Tusco Co., Ltd.*
- 32 Fuji Electric (Malaysia) Sdn. Bhd.*
- 33 Fuji Electric Asia Pacific Pte. Ltd.
- 34 Fuji SMBE Pte. Ltd.*
- 35 PT Fuji Electric Indonesia
- 36 Fuji Electric Vietnam Co., Ltd.
- 37 Fuji CAC Joint Stock Company
- 38 Fuji Electric Philippines, Inc.*
- 39 Fuji Electric Co., Ltd. (Myanmar Branch Office)
- 40 Rep. Office of Fuji Electric Co., Ltd. (in Cambodia)
- 41 Fuji Electric Co., Ltd. Construction Representative Office Indonesia

China / East Asia

- 42 Fuji Electric (Zhuhai) Co., Ltd.*
- 43 Fuji Electric (Shenzhen) Co., Ltd.*
- 44 Fuji Electric FA (Asia) Co., Ltd.
- 45 Fuji Electric Hong Kong Co., Ltd.
- 46 Hoei Hong Kong Co., Ltd.
- 47 Fuji Electric (Changshu) Co., Ltd.*
- 48 Wuxi Fuji Electric FA Co., Ltd.*
- 49 Fuji Electric (Hangzhou) Software Co., Ltd.
- 50 Fuji Electric (China) Co., Ltd.
- 51 West China Branch
- 52 South China Branch
- 53 North China Branch
- 54 Shanghai Electric Fuji Electric Power Technology (Wuxi) Co., Ltd.*
- 55 Fuji Electric Dalian Co., Ltd.*
- 56 Fuji Electric Motor (Dalian) Co., Ltd.*
- 57 Dalian Fuji Bingshan Vending Machine Co., Ltd.*
- 58 Dalian Fuji Bingshan Vending Machine Sales Co., Ltd.
- 59 Fuji Electric Taiwan Co., Ltd.
- 60 Fuji Electric Korea Co., Ltd.
- 61 Beijing Rep. Office