

History

Fuji Electric continues to evolve in step with the times and with society, with technology as our driving force.

Company

- 1923 Fuji Electric Manufacturing Co., Ltd., established
Established as a capital and technology alliance between Japan-based Furukawa Electric Co., Ltd. and German-based Siemens AG. The result was a company with characteristics inherited from industry in both countries.
- 1925 Began operation of the Kawasaki Factory
- 1935 Established Fuji Tsushinki Manufacturing Co., Ltd. (Present: FUJITSU LIMITED) by spinning off the Telephone Department
- 1942 Began operation of the Matsumoto Factory
- 1943 Began operation of the Fukiage Factory and Tokyo Factory
- 1944 Began operation of the Mie Factory
- 1961 Began operation of the Chiba Factory
- 1968 Began operation of the Kobe Factory and Suzuka Factory
- 1970 Established Fuji Electric Co., Ltd., USA (Present: Fuji Electric Corp. of America)
- 1973 Began operation of the Otawara Factory
- 1984 Changed company name to Fuji Electric Co., Ltd.
- 1987 Established Fuji Electric Gesellschaft mit beschränkter Haftung (Present: Fuji Electric Europe GmbH)
- 1989 Established Singapore Fuji Electric Co., Ltd. (Present: Fuji Electric Asia Pacific Pte. Ltd.)
- 1991 Began operation of the Yamanashi Factory
- 1995 Established Fuji Electric (Thailand) Co., Ltd.
- 1995 Established Fuji Electric Philippines, Inc.
- 1996 Established Fuji Electric (Malaysia) Sdn. Bhd.
- 1999 Established Fuji Electric (Shanghai) Co., Ltd. (Present: Fuji Electric (China) Co., Ltd.)
- 2002 Introduced our corporate symbol mark (Photo 1)
- 2003 Changed company name to Fuji Electric Holdings Co., Ltd., owing to shift to pure holding company system
- 2003 Established Dalian Fuji Bingshan Vending Machine Co., Ltd.
- 2008 Fuji Electric FA Components & Systems Co., Ltd., merged operations with Schneider Electric Japan Ltd. (power distribution and control equipment joint venture)
- 2008 Established METAWATER Co., Ltd. as a joint venture with NGK Insulators, Ltd.
- 2009 Established Fuji Electric India Private Ltd.
- 2010 Established Fuji Electric Power Supply (Thailand) Co., Ltd. (Present: Fuji Electric Manufacturing (Thailand) Co., Ltd.)
- 2010 Began operation of the Tsukuba Factory
- 2011 Changed company name to Fuji Electric Co., Ltd.
- 2011 Established PT. Fuji Electric Indonesia
- 2013 Established Fuji Electric Vietnam Co., Ltd.
- 2014 Created new corporate brand emblem for products (Photo 2)



Company emblem, "FS" mark



Photo 1



Photo 2

1920

2000

Technology

- 1924 Began manufacturing electric motors (Photo 3)
- 1925 Began manufacturing transformers
- 1930 Began manufacturing mercury-vapor rectifiers
- 1936 Built first hydraulic turbine, 4,850 HP Francis turbine (Photo 4)
- 1937 Began manufacturing watt-hour meters
- 1954 Began manufacturing ultra-compact magnetic switches (Photo 5)
- 1955 Full-scale entry into thermal power generation business
- 1959 Began manufacturing silicon diodes
- 1965 Electric propulsion system fitted to Antarctic exploration ship Fuji
- 1966 Supplied nuclear pressure vessels and other equipment to the Tokai Nuclear Power Plant
- 1966 Released medium and large capacity UPSs (200 kVA)
- 1969 Released vending machines (Photo 6)
- 1970 Released cup-type coffee vending machines
- 1973 Released open showcases
- 1974 Released installation-type ultrasonic flowmeters
- 1975 Began manufacturing bipolar transistors
- 1976 Began manufacturing general-purpose inverters (Photo 7)
- 1976 Released hot & cold vending machines
- 1977 Received an order for our first full-scale geothermal power generation facility
- 1980 Released the programmable logic controller "MICREX-P"
- 1988 Supplied world's first EIC integrated control system to a steel company
- 1988 Began manufacturing 1st-generation IGBTs (Photo 8)
- 1997 Supplied the world's first large-capacity flat IGBT equipped main converters for Shinkansen trains
- 1997 Expansion of 4th-generation IGBT product lineup
- 1998 Supplied 100 kW phosphoric acid fuel cells
- 2002 Supplied environmental radiation monitoring systems
- 2010 Development of SiC modules of next-generation power semiconductors (Photo 9)
- 2011 Released hybrid heat pump vending machines
- 2012 Released power conditioning systems for mega solar
- 2012 Released coffee machines for convenience stores
- 2016 Began shipping direct water-cooled power modules for automotive applications (built-in RC-IGBT)
- 2017 Supplied SiC-equipped main converters for Shinkansen trains
- 2017 Delivered one of Japan's largest geothermal binary plants
- 2018 Began shipping 7th-generation RC-IGBTs for industrial equipment
- 2018 Supplied exhaust gas cleaning systems for ships
- 2019 Released on-site diagnostic system that uses analytics and AI (Photo 10)
- 2021 Released 7500WX Series large-capacity UPS



Photo 3

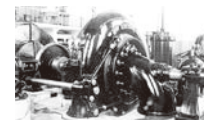


Photo 4

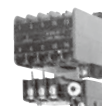


Photo 5



Photo 6



Photo 7



Photo 8



Photo 9



Photo 10