

History

Fuji Electric continues to evolve in step with the times and with society, with technology as our driving force.

Company

1923

Fuji Electric Manufacturing Co., Ltd., established
Established as a capital and technology alliance between Japan Furukawa Electric Co., Ltd., and German Siemens AG. The result was a company with characteristics inherited from industry in both countries



1925

Began operation of the Kawasaki Factory

1942

Began operation of the Matsumoto Factory

1943

Began operation of the Fukiage and Toyoda factories



Company emblem, "FS" mark

1944

Began operation of the Mie Factory

1961

Began operation of the Chiba Factory

1968

Merged with Kawasaki Denki Seizo Co., Ltd., and commenced operations at the Kobe and Suzuka factories

1973

Began operation of the Otawara Factory

1984

Changed company name to Fuji Electric Co., Ltd.

1991

Began operation of the Yamanashi Factory

2002

Introduced Company symbol mark



Symbol mark

2003

Changed company name to Fuji Electric Holdings Co., Ltd., owing to shift to pure holding company system

2008

Fuji Electric FA Components & Systems Co., Ltd., merged operations with Schneider Electric Japan Ltd. (Power distribution and control equipment joint venture)

2011

Changed company name to Fuji Electric Co., Ltd.

2014

Created new corporate brand emblem for products



Emblem

1920~

1950~

1980~

2010~

Technology

1924

Began manufacturing electric motors

1925

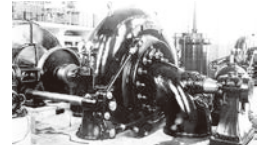
Began transformer production

1927

Began electric fan production

1936

Built first hydraulic turbine, 4,850 HP Francis Turbine



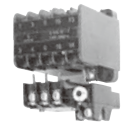
Francis Turbine

1937

Began watt-hour meter production

1954

Began ultra-compact magnetic switch production



Ultra-compact electromagnetic switch

1959

Began manufacturing silicon diodes

1969

Began production of vending machines



The first vending machines

1971

Began manufacturing hybrid ICs

1976

Began manufacturing general-purpose inverters



General-purpose inverters

1985

Released the programmable logic controller "MICREX-F Series"

1987

Developed IGBT module

1991

Began manufacturing 2.5-inch magnetic disks

1996

Won order for IGBT main conversion devices used in electric railways (The world's first large-capacity flat IGBT)



Flat IGBT

1998

Delivered 100 kW phosphoric acid fuel cell

2010

Developed next-generation SiC module power semiconductor



SiC module

2012

Developed inverter equipped with next-generation power semiconductor SiC-SBD, a first in Japan

Inverters equipped with power semiconductor SiC-SBD



2014

Launched power electronics equipped with SiC power semiconductors



Power conditioning systems for high-capacity mega solar use

2015

Launched steam-generation heat pumps

2018

Began manufacturing exhaust gas cleaning systems for ships

Exhaust gas cleaning systems for ships

