

To All Customers

Rep No.C24006

April 10, 2024

Fuji Electric FA Components  
& Systems Co., Ltd.

[Production discontinuation]

**Notification of Production Discontinuation of Some Zero-Phase Current Transformers with Conductors**

We would like to thank you for your continued patronage of Fuji products.  
 We are writing to announce the production discontinuation of some of our products.  
 Details are described below. Please review the following information and take appropriate actions.  
 Please also inform all related sections of your company of this discontinuation.

|  |  |
|--|--|
| Product name                             | Zero-phase current transformer with conductor  |
| Series name                              | EW-Z Series  |
| Basic type                               | EW-Z□B40, EW-Z□B50<br>□: 3-pole, 4-pole  |
| Reason for discontinuation of production | Due to difficulties in maintaining production caused by a decrease in volume                         |
| Alternative models                       | Please select a type with a higher rating that will continue to be produced in the future.           |
| Period for production discontinuation    | Immediately  |
| Attachments                              | Attachment 1 "Alternative Products for Discontinued Zero-Phase Current Transformers with Conductors" |
| Last order date                          | Last order service will not be provided.   |
| Maintenance parts                        | There are no maintenance parts.  |
| Others                                   | None   |

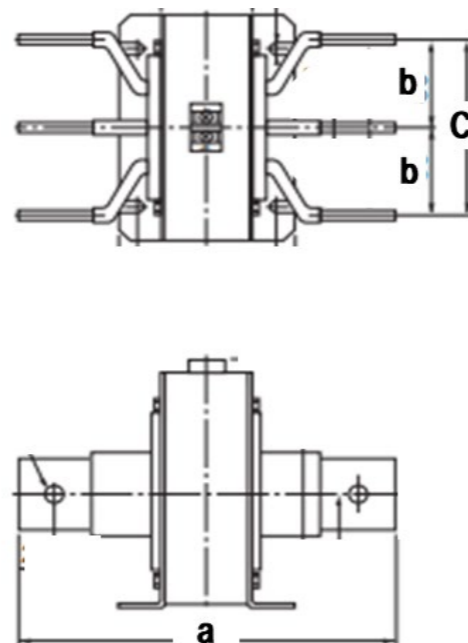
As an alternative, please select a type with a higher rating that will continue to be produced.  
 In addition, please note that the total width of the conductor and the dimension between poles will also change according to the selection of the higher rated product type.

● Applicable types

| No. of poles    | Types           | Rated current<br>(A) | ZCT through hole | Conductor total<br>width (mm)<br>a | Pole-to-pole dimension (mm) |            | Future production   |
|-----------------|-----------------|----------------------|------------------|------------------------------------|-----------------------------|------------|---------------------|
|                 |                 |                      |                  |                                    | b                           | c          |                     |
| 3-pole products | <b>EW-Z3B40</b> | <b>400</b>           | <b>φ70</b>       | <b>200</b>                         | <b>50</b>                   | <b>126</b> | <b>Discontinued</b> |
|                 | <b>EW-Z3B50</b> | <b>500</b>           | <b>φ70</b>       | <b>200</b>                         | <b>50</b>                   | <b>126</b> | <b>Discontinued</b> |
|                 | EW-Z3B60        | 600                  | φ90              | 400                                | 120                         | 240        | Continued           |
| 4-pole products | <b>EW-Z4B40</b> | <b>400</b>           | <b>φ90</b>       | <b>300</b>                         | <b>80</b>                   | <b>240</b> | <b>Discontinued</b> |
|                 | <b>EW-Z4B50</b> | <b>500</b>           | <b>φ90</b>       | <b>300</b>                         | <b>80</b>                   | <b>240</b> | <b>Discontinued</b> |
|                 | EW-Z4B60        | 600                  | φ90              | 400                                | 80                          | 240        | Continued           |

● Image of outline dimensions

3-pole products  
EW-Z3B□



4-pole products  
EW-Z4B□

