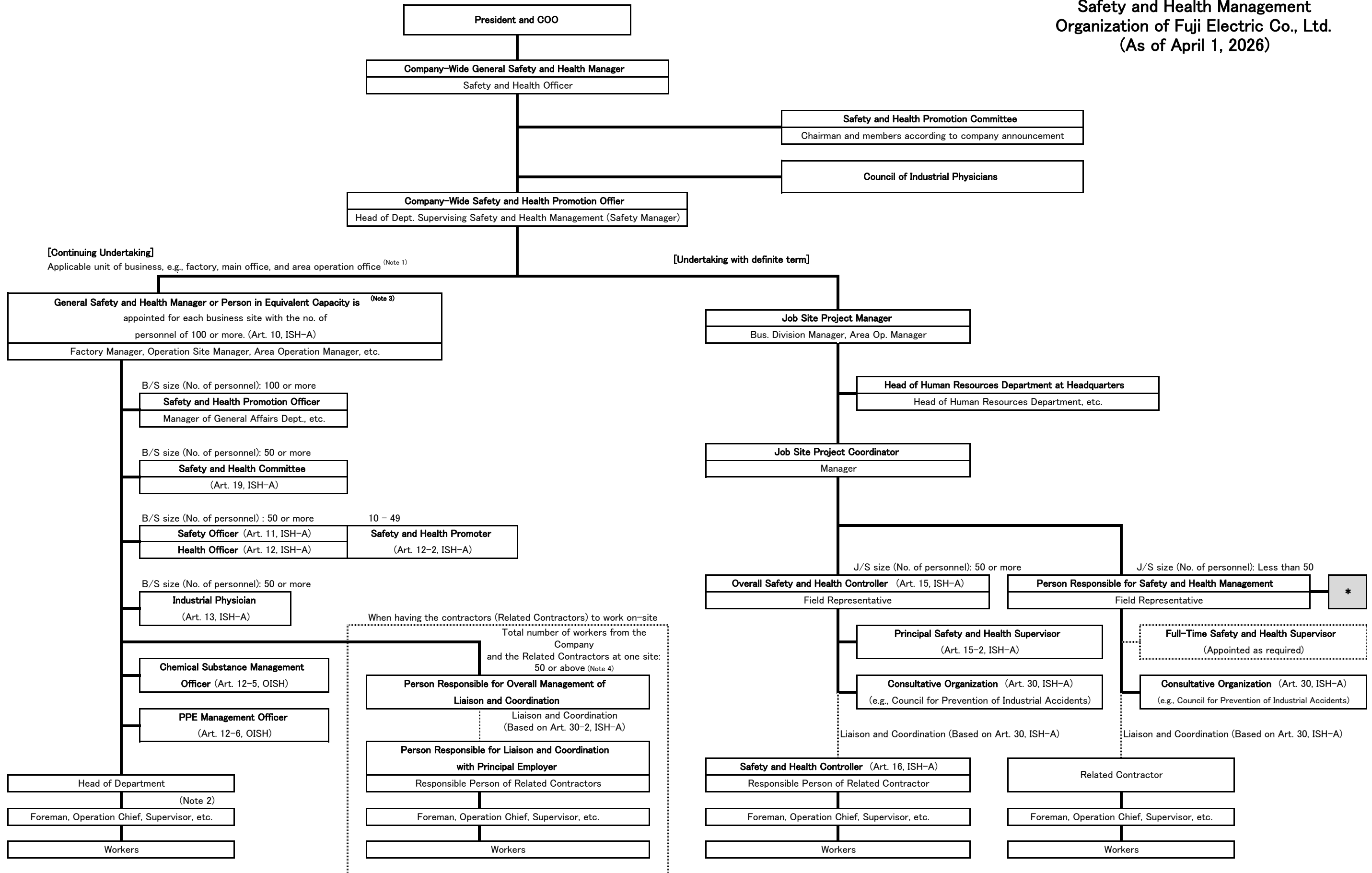


**Safety and Health Management  
Organization of Fuji Electric Co., Ltd.  
(As of April 1, 2026)**



(Note 1) The department with no independent function, such as subordinate business sites and service center, are included in their direct superior organization.  
 (Note 2) For direct department of manufacturing, testing, and CE.  
 (Note 3) Responsible person who manages the business site, such as General Safety and Health Manager  
 (Note 4) Even if the number of workers is 50 or less, the equivalent liaison and coordination are implemented (no need to appoint "Person Responsible for Overall Management of Liaison and Coordination"). (Based on Art. 30-2, ISH-A)

**\* Site Safety and Health Supervisor (Art. 15-3, ISH-A)**  
 At a medium-scale workplace where the appointment of the Overall Safety and Health Controller is not required, the Site Safety Health Supervisor shall be appointed, depending on the number of workers involved and what work is being undertaken, to provide guidance etc. to the person responsible for safety and health management within that workplace. The word "site" in this case means an organization, such as the main office (sales and business departments) and area operation office which provides guidance and support to and undertakes management of each job site.