

Fuji Electric's Energy-Related Businesses

Fuji Electric's energy-related businesses utilize its electric and thermal energy technologies to contribute to society, in everything from energy creation in the area of power supply, energy conservation in the area of demand, to the optimal energy management used to join the two.

Energy Management

- Community energy management system
- Smart meters
- Substation equipment



Community energy management system

Power Plants

- Steam turbines
- Power generation facilities
- Solar cells
- Fuel cells



Steam turbines

Factories

- Industrial-use inverters
- Synchronous motor systems
- Power semiconductors
- Rectification equipment
- Clean rooms
- Magnetic contactors / Molded-case circuit breakers
- Power receiving and distribution substation equipment



Industrial-use inverters

Automobiles

- EV systems
- Automotive-use IGBTs
- Power MOSFETs
- Quick Chargers



EV systems

Railways

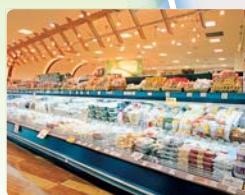
- Main converters
- Main electric motors
- Linear door systems



Main converters for N700 Series Nozomi Shinkansen

Stores

- Vending machines
- Food service equipment
- Refrigerated and freezer showcases
- Energy-saving stores



Refrigerated and freezer showcases

Office Buildings

- General-purpose inverters
- Uninterruptible power supply systems (UPSs)
- Switching power supplies
- Local air conditioning systems
- Internet data centers (IDCs)



IDCs

Fuji Electric's Global Presence

Fuji Electric is contributing to the resolution of social issues, such as those related to energy and the environment, around the world through the provision of its various products and services.



China



Our vending machines are placed in a number of locations, including public facilities such as airports and subway stations as well as in office buildings, factories, and schools.



Our power semiconductors are helping save energy and resolve environmental issues through their usage in inverters, elevators, air conditioning facilities, solar and wind power generation systems, electric and hybrid-electric buses, and other items.



Our inverters are used in high-rise distribution warehouses, thus facilitating smooth selection and storage of wares.



The electric induction furnaces we supply are essential in melting the metals needed to make automobiles, construction equipment, and other items.

Asia



South Korea

We provide highly efficient UPSs to major electric machinery manufacturers to stabilize operation of their ultra-efficient processing production lines.



Singapore

We provide inverters featuring specialized functions to be used in the air conditioning and pump control systems at Gardens by the Bay, one of Asia's largest botanical gardens.



The Land Transport Authority is supplied with equipment, such as inverters, auxiliary power supplies, and motors, for use in state-of-the-art subway trains.



Indonesia

We have delivered nine geothermal power generation systems to this geothermal power-rich nation.



Oceania



New Zealand

We have constructed a geothermal power plant that employs a triple flash system to realize the highest single unit generation capacity in the world*.



Thailand

We supplied the steam turbines and all of the generator units used in the Maemo Power Plant, one of South-east Asia's largest coal-fired thermal plants.



India

Major elevator manufacturers are supplied with our powerful and easy-to-use specialty inverters.

Middle East



UAE

We delivered and installed aluminum electrolytic rectifying facilities with the world's largest capacity in an aluminum smelting plant.



Bahrain

We supply 220kV gas-insulated switchgears for use in the transmission equipment of power companies.



Africa



South Africa

To a government-run power utility, we supply transformers (800kV shunt reactors) capable of handling voltages of among the highest levels in the world.

The Americas



The power semiconductors we provide are used in generating solar power, wind power, and other forms of renewable energy.



We have supplied the New York City Transit Authority with linear door systems for trains.



Europe



Germany

Our 100kW fuel cells equipped with hypoxic supply functions, which supply electricity and heat while helping prevent fires, are used in data centers and other facilities.



France

The company manufactures differential pressure transmitters that can measure pressure differences under higher levels of static pressure than any other transmitter in the world*. In France and around the world, these items are supplied to manufacturers of three-phase flow meters for use in drilling offshore oil wells.



Spain

Our inverters are used in the elevator currently under construction in the tower portion of the Sagrada Familia.

* As of July 2012, based on Company data