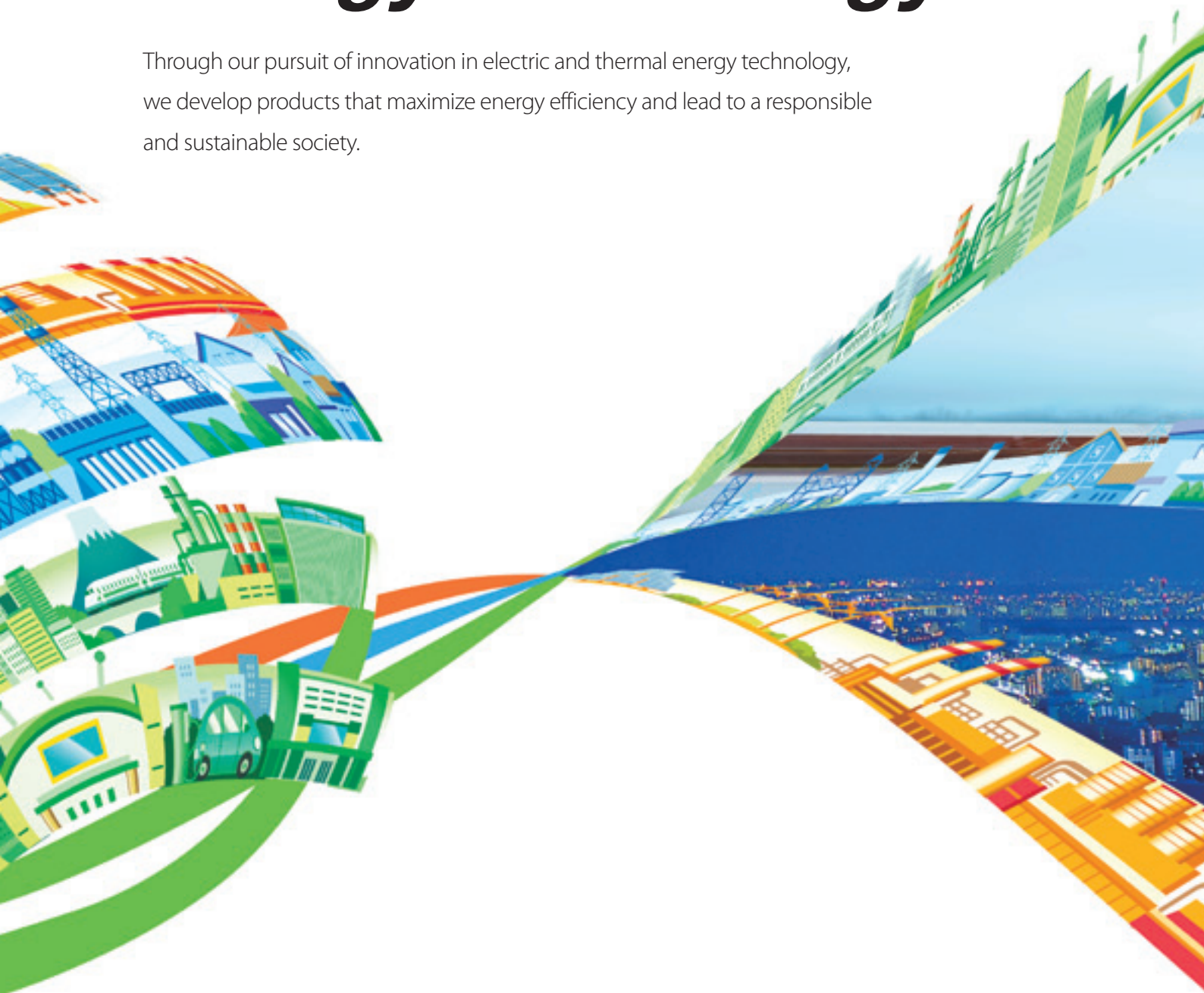




Corporate Profile 2012

Innovating Energy Technology

Through our pursuit of innovation in electric and thermal energy technology, we develop products that maximize energy efficiency and lead to a responsible and sustainable society.







Working toward Global Fuji Electric through Our Energy-Related Business

Throughout the 90 years since our founding, Fuji Electric has innovated energy technology to make broad contributions to the world in the fields of industrial and social infrastructure.

Now, through the unprecedented population growth and rapid advance of industrialization, the globe is facing energy and environmental issues.

Building on our technology and experience, Fuji Electric aims to pursue technology for electric and thermal energy, and to continue creating high value-added, environmentally friendly products that use energy with maximum efficiency.

We will also expand our energy-related businesses around the world, work toward harmony with the ever-changing natural environment and contribute to the realization of a safe, serene, sustainable society.

The people at Fuji Electric are united in our desire to promptly meet the diverse needs of our customers by bringing together their vast array of individual talents.

We hope that you will hold Fuji Electric to high expectations in the future.

Michihiro Kitazawa
President and
Representative Director

A handwritten signature in black ink, which appears to read "M. Kitazawa". The signature is fluid and cursive, written in a professional style.

Corporate Philosophy

Corporate Mission

We, Fuji Electric, pledge as responsible corporate citizens in a global society to strengthen our trust with communities, customers and partners. Our mission is to:

- **Contribute to prosperity**
- **Encourage creativity**
- **Seek harmony with the environment**

Management Policy

1. Through our innovation in energy technology, we contribute to the creation of responsible and sustainable societies.
2. Achieve further growth through our global business expansion.
3. Maximize our strengths as a team, respecting employees' diverse ambition.

Fuji Electric's energy-related business

Fuji Electric contributes to society through energy-related business taking advantage of electric and thermal energy technologies, from "energy creation" in the electrical power supply to "energy saving" in electrical power demand, and on "energy management" to optimize power supply and demands.

In energy management

- ▶ Cluster Energy Management System
- ▶ Smart meters
- ▶ Substation Equipments



Cluster Energy Management System

In power stations

- ▶ Steam turbines
- ▶ Power generation facilities
- ▶ Solar cells
- ▶ Fuel cells



Steam turbine

In factories

- ▶ Industrial inverters
- ▶ Synchronous motor systems
- ▶ Power semiconductors
- ▶ Rectification equipments
- ▶ Clean rooms
- ▶ Magnetic switches / Molded-case circuit breakers
- ▶ Substation Equipments



Industrial inverters

In automobiles

- ▶ Systems for EV
- ▶ Automotive IGBTs
- ▶ Power MOSFETs
- ▶ Quick chargers



Systems for EV

In railways

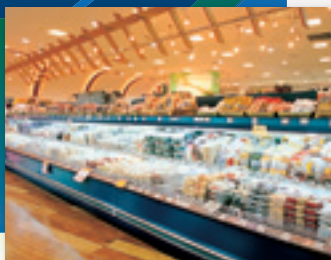
- ▶ Traction converters
- ▶ Traction motors
- ▶ Linear door systems



Traction converter for the Shinkansen Nozomi N700 series

In shops

- ▶ Vending machines
- ▶ Food service equipments
- ▶ Freezer and refrigerated showcases
- ▶ Energy saving shops



Freezer and refrigerated showcases

In office buildings

- ▶ General-purpose inverters
- ▶ Uninterruptible power supply systems
- ▶ Switching power supplies
- ▶ Local air-conditioning systems
- ▶ IDC (Internet data center)



IDC

Flourishing Fuji Electric in the world

Fuji Electric contributes to solve the social issues such as energy problems and environmental problems through providing a wide variety of products and services around the world.

China

Europe



In Germany

In addition to the supply of electric power and heat, we provide data centers with 100kW fuel cells equipped with low-oxygen supply features effective in fire prevention.



In France

We manufacture differential pressure transmitters able to measure differential pressure under the world's highest static pressure, and supply these to French and global makers of three-phase flowmeters for submarine oil fields.



In Spain

In the Sagrada Familia, our inverters are in operation in the elevators of the tower sections currently under construction.



In India

We supply powerful and easy-to-use dedicated inverters to major elevator manufacturers.



In Bahrain

We supply GIS (gas insulated switchgears) in 220kV to power company's substation equipments.



In the UAE

We delivered and installed the world's highest-capacity aluminum electrolysis rectification equipment for an aluminum smelting plant.

Africa



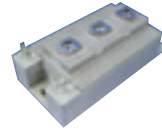
In South Africa

We supplied substation equipments (800kV shunt reactor), the highest voltage class in the world, to a state-run power company.



In China

We supply electric induction furnaces to melt metal, which are indispensable for manufacturing automobile and construction machinery.



In China

Our power semiconductors are used in inverters, elevators, air-conditioning equipments, photovoltaic/wind power generation, and EV/HEV bus, where they contribute to saving energy and solving environmental issues.



In China

Our inverters are used in high-rise warehouses for a logistics company in China, where they contribute to increase picking capacity.



In China

Our vending machines are used widely in public facilities such as airports and subways, in office buildings, factories and schools.

America



In South Korea

We provide high-efficiency UPSs (uninterruptible power supplies) for stable operation of the ultra-precision processing and production lines of major general electrical machinery manufacturers.



In the US

We provide power semiconductors for wind power generation and photovoltaic power generation, in the renewable energy field.



In the US

We supplied linear motor-driven door systems for railway cars to the New York City Department of Transportation.



In Thailand

We supplied all units of turbines and generators to the Mae Moh Power Plant, the largest class coal-fired thermal power plant in South-East Asia.



In New Zealand

We constructed a geothermal power plant that employs a triple flash system and boasts the world's highest single unit output.



In Singapore

We provide air conditioner and pump inverters with dedicated air conditioner and pump control functions, for one of the largest botanical gardens in Asia (Gardens by the Bay).



In Indonesia

We have supplied nine geothermal power generating units in this country rich in geothermal resources.



In Singapore

We supply the Singapore Land Transit Authority with inverters, auxiliary power supplies, motors and other facilities for latest-model subway cars.

Power / Social Infrastructure

We integrate environmentally friendly electrical power plants with energy management, contributing to the realization of smart communities.



Geothermal Power Generation

As the world's top manufacturer of geothermal power plants, we not only manufacture turbines and generators but also offer comprehensive plant construction solutions covering electric power generation system design, installation work, and trial operation. We are also engaged in the growing field of binary power plants, which make low-temperature-source generation possible.



Nga Awa Purua Geothermal Power Station, 140-MW capacity: World's largest single unit output (New Zealand)



Wayang Windu Geothermal Power Plant (Indonesia)



Kawerau Geothermal Power Plant (New Zealand)

Fuel Cells

Through high-efficiency and clean power generation facilities, we contribute to energy saving and the reduction of CO₂ emissions. We are working to expand disaster equipment that replaces city gas with stored LP gas to hospitals, schools, and other facilities and also, digester gas-using equipment that generates green electric power, to sewage bureaus.



Fuel cells

Thermal Power Generation

We design and construct the steam turbines and generators that are the heart of any thermal power generation system, offering equipment models and configurations to meet the demands of various plants. We respond to the needs of diverse plants not only in Asian markets but also around the world.



Steam turbine



Thermal power generation facilities

Hydraulic Power Generation

As a leader in renewable energy, we are involved in performance development of diverse turbines and generators including bulb turbines and vertical bulb turbines for ultra-low head hydraulic power generation. We also offer comprehensive systems such as automated control systems, dam management systems, and river control systems.



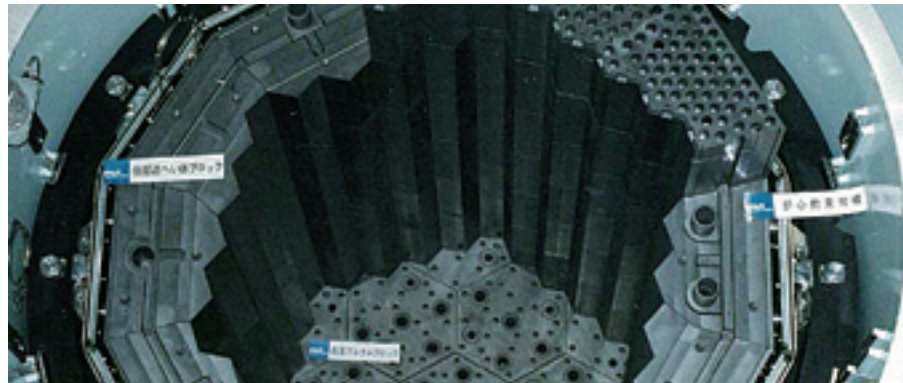
Hydraulic power plant (South Korea)



Kaplan turbine runner

Nuclear Power

In the field of nuclear fuel recycling, we supply MOX fuel manufacturing facilities and other process facilities. In addition, we are promoting the supply of machinery in the fields of radioactive waste processing and nuclear power plant decommissioning, and the development of high-temperature gas-cooled reactors with a view toward hydrogen production through nuclear power.



High temperature gas-cooled reactor

FE by Region : America

Fuji Electric received an order for the largest biomass power generation facilities in the US

Biomass power generation is a means of electric power generation that uses the heat generated by burning wood scrap. Our company received an order for one of the largest biomass power generation facilities in the US, at which time we coordinated technologies for turbine power generation. We are able to customize turbines and generators to meet customers' demands. Through customization we draw out maximum-level efficiency and contribute to the optimization of power plant operations. We intend to continue our commitment to innovation in turbine and generator technology so that people around the world can use electricity safely and efficiently.

Chiharu Noda (front row, left)
Power Plant Division, Power & Social Infrastructure Business Group



Power / Social Infrastructure



Energy Management

The business of next-generation electric power networks (smart grids) is growing in tandem with the spread of renewable energy. The grid connection and distribution control technologies that control power transmission grids make up an important segment of the smart grid market. We intend to expand the systems and related equipment businesses by offering technologies for user grids for factory and commercial buildings, as well as for municipal-level smart communities.



Cluster Energy Management System(CEMS)



Smart meters



Community-installed electric power storage systems



Substation equipments (transformers)

Transport Systems



Traction converter for the Shinkansen Nozomi N700 series



Traction motor



Linear motor-driven door systems for railway cars

In addition to the traction converters and traction motors used to control the running of the Shinkansen and other rail lines, we also offer railway-use substation equipment, linear doors, tunnel ventilation systems, and highway remote monitoring systems. We aim to improve safety while reducing environmental impact.

Radiation equipment



PA post



High-performance integral dosimeter

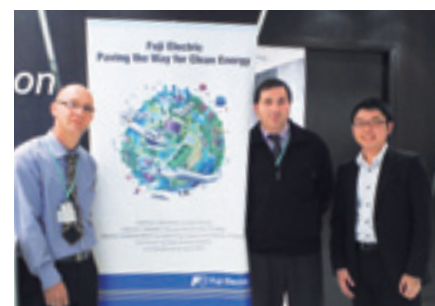
Fuji Electric has a long history of achievement in radiation instrument manufacturing. We provide our products and systems to nuclear facilities, institutes, hospitals, universities, and regional governments in Japan.

FE by Region : South Africa

Contributing to electric power infrastructure in South Africa

Power outages were nearly a daily occurrence in the Republic of South Africa. Transformers supplied by Fuji Electric now support the country's electric power infrastructure. In this ongoing large-scale project, which spans equipment manufacture to local installation, we have been active in broad areas from contract fulfillment to after-sales service. One, high technical capabilities and quality-based reliability; two, passion and thorough follow-up; and three, our proposal capabilities—these are the strengths of Fuji Electric that led to our winning the project.

Kei Matsumoto (right)
Power & Social Infrastructure Sales Division, Global Business Group

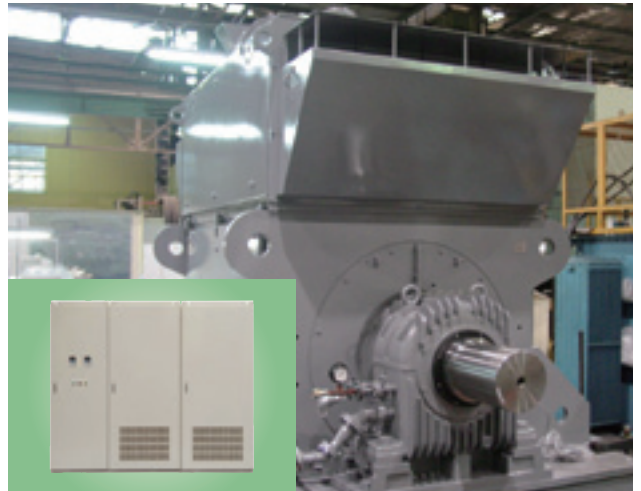


Industrial Infrastructure

Fuji Electric offers "energy saving" and "lifecycle service" connected to the production lines and infrastructure installations of diverse customers in the field of industry.

Industrial Plants

We offer practical manufacturing systems as well as monitoring control systems, and components enabling visualization and analysis/evaluation of energy consumption, revolving around our industrial drive systems consisting of inverters, motors, etc. Our solutions focus on optimizing the energy supply for the entire plant while reducing greenhouse gas emissions.



Large-power drive system



Gas analyzer series



Plant monitoring control system

Facilities



Electric substation equipments



High-capacity rectification equipments



Induction heating equipments



Clean room system



Internet data center (IDC)

Fuji Electric achieves stable electrical power by providing industrial power supply equipments such as electric substation equipment, generators, and other power supply equipment for factories and facilities of all types, as well as high-capacity rectification equipment for aluminum smelters and chemical plants.

We also contribute to the stable supply of electricity and energy saving in broad fields including IDCs (Internet data centers) and clean room facility for the semiconductor and liquid crystal manufacturing industries, through providing power supply equipment and heating/ air conditioning equipment collectively.

FE by Region : UAE

Fuji Electric wins order for the world largest AC to DC power conversion system (Fuji S-Formers) for aluminum smelter.

Aluminum is in the spotlight as a material that achieves weight reduction in automobiles and aircraft. Fuji S-Formers send high-current DC electricity to smelt raw materials into aluminum. We won an order from UAE for the world's largest-capacity AC to DC power conversion system. The driving force behind our winning the order was our rich experience and world-leading technical capability, as well as the professionalism of our devoted and skillful team. When moving ahead on the project, it is extremely important to understand and respect the cultures and ways of thinking of the client's multinational individuals, and work as one team toward the same goal. We will work hard and deliver Fuji S-Formers to clients all over the world.

Toshiro Tomiki (front row, right)
Industrial Infrastructure Sales Division, Global Business Group



Power Electronics

By providing power electronic application products to markets that demand efficient use and quality of energy, we contribute to the realization of a safe, serene, and sustainable society.

Drives



General-purpose inverters



High-efficiency synchronous motor

Power Supply



Mini uninterruptible power supply system (UPS)

We offer switching power supply systems for embedding in information devices and facilities equipments, such as servers and supercomputers, and UPS (Uninterruptible power supply systems) as a countermeasure for power failures. Our products help stabilize equipment operation and save energy.



High-capacity UPS



Switching power supply (for servers)

We offer inverters, servo systems, motors/motor application products, synchronous motor systems, and other equipment indispensable to drive and control factory equipment and machine tools. While we continue to meet domestic demand, we are also expanding our overseas sales, focusing on China having high demand.



EV system (Quick charger)



EV system (in-vehicle)



Automotive IGBT

Our quick chargers, which integrate our diverse technologies in power supplies, vending machines, devices, communications control, etc., are widely deployed in social infrastructure. In addition, we aim to enter the motor control and other automotive power electronics markets, leveraging our power semiconductor technologies mounted in electric and other environmentally friendly automobiles. We will contribute to the realization of a global low-carbon society, in areas from social infrastructure to automobiles.

Electrical distribution & control components



Magnet switches



Molded-case circuit breakers

We offer power distribution and control equipment such as magnet switches and molded-case circuit breakers for manufacturing equipment and other machineries in factory, so as to meet the customers' energy saving and safety needs.

FE by Region : Asia & Europe

Expanding sales of HVAC/AQUA inverters

Our new HVAC/AQUA model inverters, bound for overseas, are specialized for control of HVAC (fans for air conditioning) and AQUA (pumps for water treatment). We are continuously working to expand sales of the models in Asia, with its fast-growing markets, and in Europe, where demand for energy saving is growing. These inverters have features specialized for the air conditioning and water treatment markets. With built-in noise-reduction filters, they employ eco-friendly design. We intend to contribute to energy saving around the world by strengthening not only our product capabilities but also our sales and service structure.

Hajime Akiyama (second from right)
Power Electronics Sales Division, Global Business Group



Electronic Devices

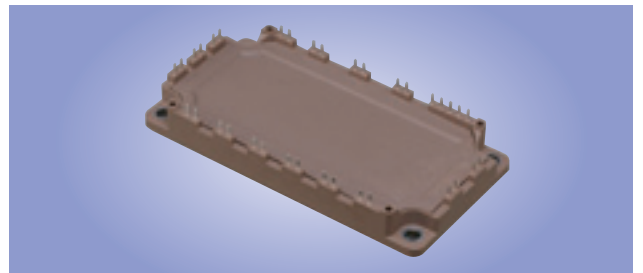
We provide power semiconductors, solar cells, organic photoconductor drums and magnetic disks, all of which are indispensable in energy and environmental fields, automotive, information device, and industrial device applications.



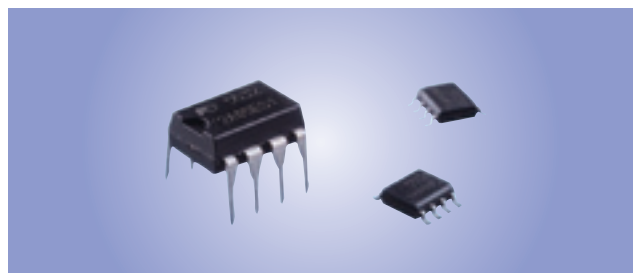
Power Semiconductors



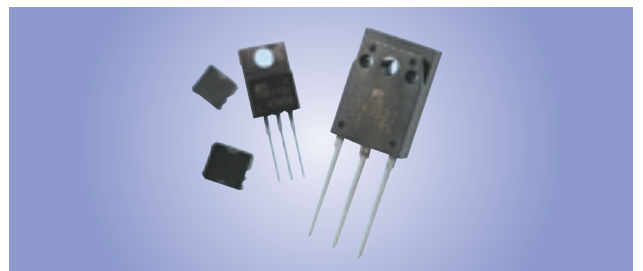
IGBT module



SiC



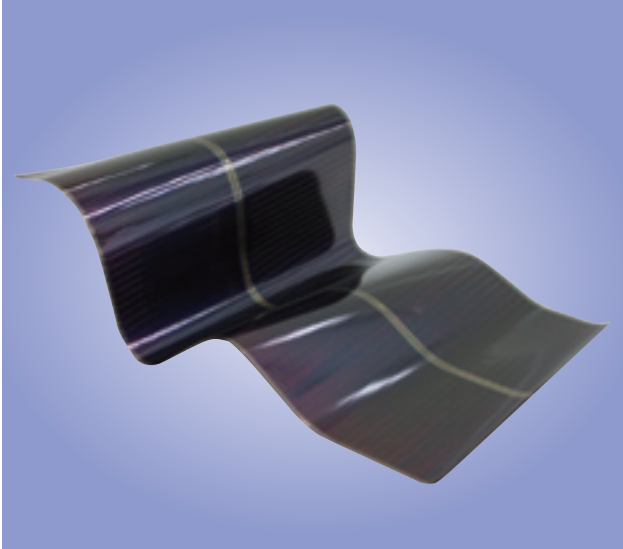
Power ICs



Power MOSFETs

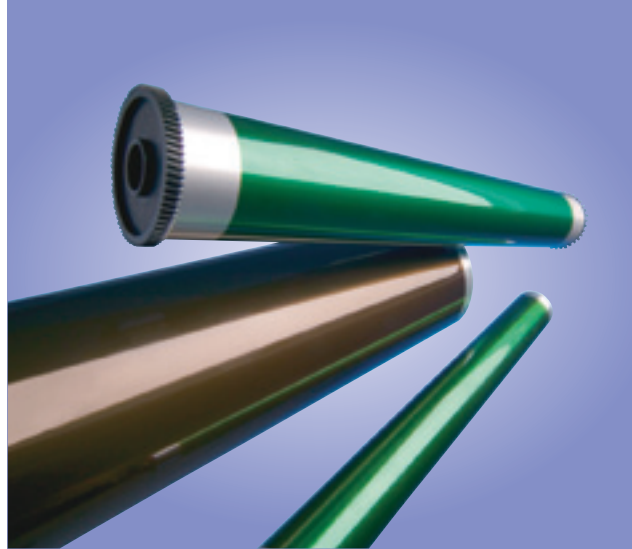
We offer power semiconductors for use in renewable energy fields such as wind power, solar power, and other new energy fields in addition to industrial equipment, information equipment, and eco-cars to control and convert electric power. These devices play an important role in energy savings to make our electronic devices product smaller, energy efficient, and high-reliable.

Solar cells



Solar cells

Organic photoconductor drums

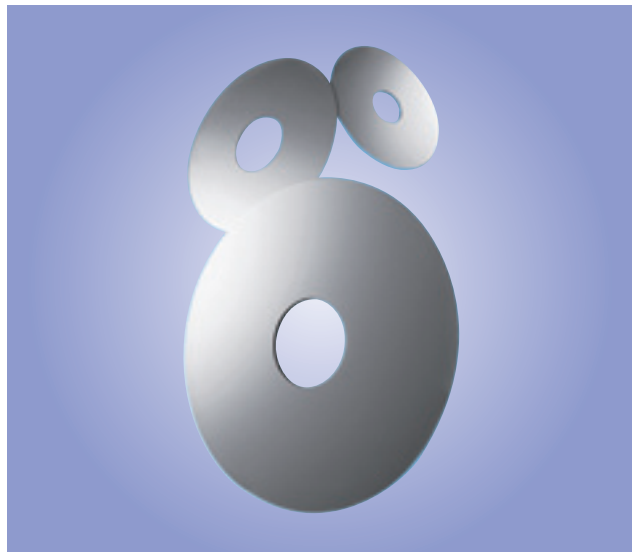


Organic photoconductor drums

We provide light, flexible film-type eco-friendly solar cells, as well as organic photoconductor drums for office multi-function copiers and printers, which support fast, high-definition document representation.

Magnetic disks

We offer the magnetic disks (hard disks) that compose the memory devices (hard disk drives) used in servers and personal computers. We employ the highest-level technology in the industry to improve the function and memory capacity of information devices.



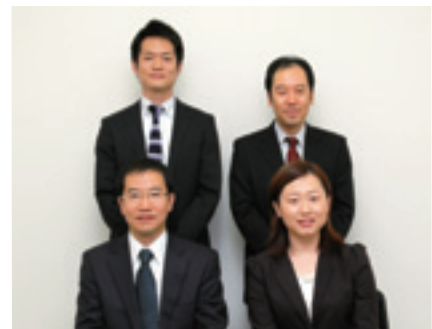
Magnetic recording media

FE by Region : China

Expanding sales of automotive power semiconductors

In fiscal 2009, the Chinese automotive market surpassed that of the US to become the largest in the world. While Fuji Electric is expanding our sales of power semiconductors throughout the world, we are particularly focused on the Chinese in-vehicle market. With the ongoing rise of eco-cars, we believe that demand will further expand. Fuji Electric has preserved a strong point in power semiconductors for applications including inverters and elevators. To expand this technology for efficiently controlling electric power in China, mutual understanding of cultures and commercial customs is essential. For that reason, we are striving to expand sales through speedy response.

Yongli Bai (front row, right)
Semiconductor Sales Division, Global Business Group



Food and Beverage Distribution

In addition to our core cooling and heating technology, we leverage systems technology that integrates mechatronics technology with IT to offer optimal goods and solutions.



Vending machines



Hybrid heat pump vending machine



General-purpose food vending machine

We are responding to customers' diverse needs with a full line-up of model variations as a leading company. We are also working hard to expand the use and popularity of environmentally friendly vending machines.



Food service equipments (coffee machines)

We provide food service equipments active in a variety of scenarios, with diverse models matched to location and purpose.

Store & distribution



Freezer and refrigerated showcases / Energy management system

Fuji Electric provides currency handling equipment and energy efficient cold-chain equipment, such as freezer and refrigerated showcases, for display of commercial products according to application. We also assist in areas such as creation of stores and energy management matched to customers' needs, and energy saving in distribution centers.



Coin and banknote recycler



Example of store design work



Environmentally friendly store (Ecolo panels)

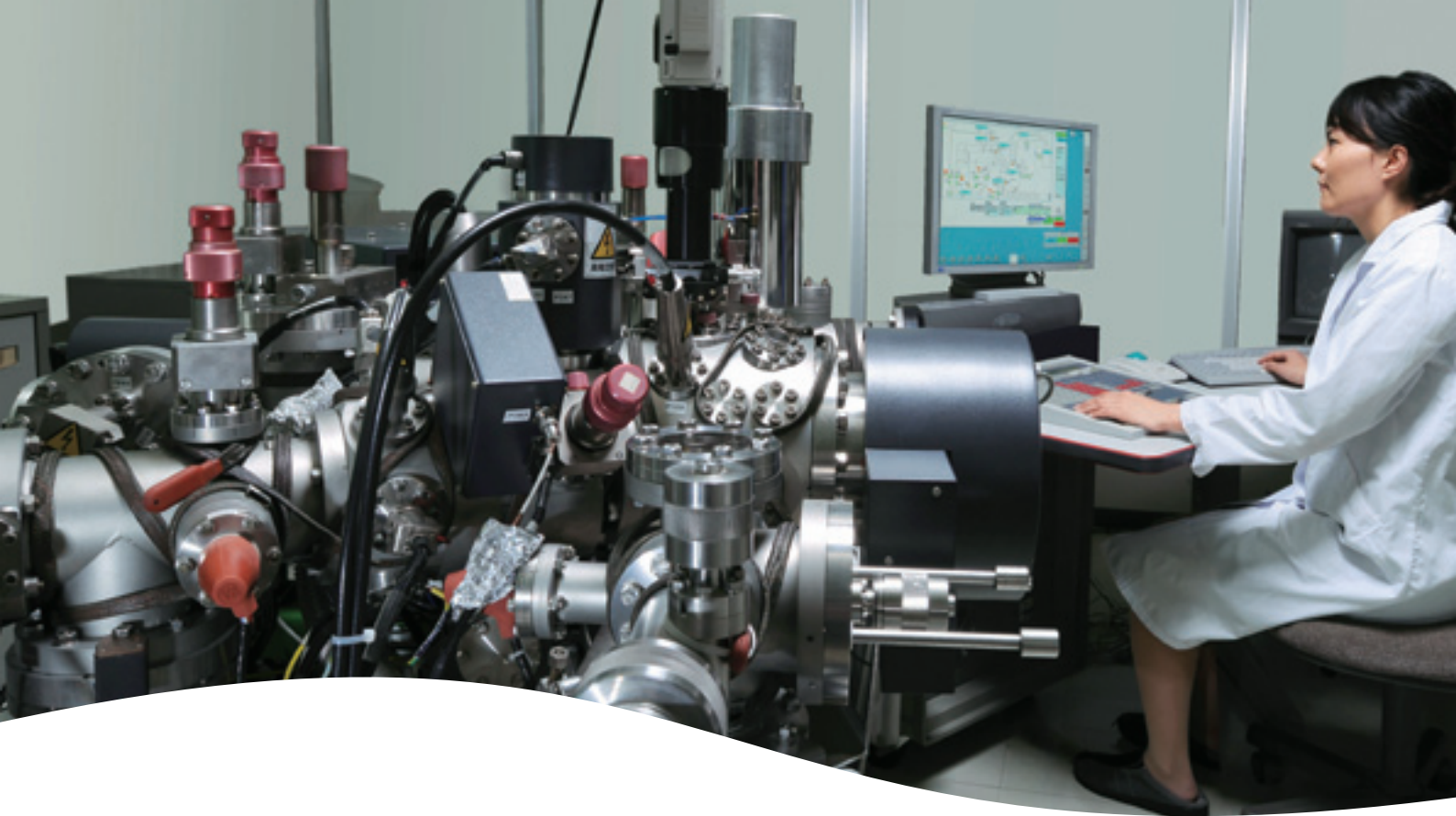
FE by Region : Japan

Realizing safe, serene, and appealing commercial spaces

Chain stores such as supermarkets and restaurants demand measures for managing electric power and saving energy for the chain as a whole. To meet the customers' requests, we provide storewide energy management systems and other environmental equipment driven by our latest technologies. Our aim is not energy saving alone, but also the realization of safe and serene commercial spaces that are bright, comfortable, and appealing to customers. Toward the expansion of such spaces, our Sales, Technology, Construction, and Service Team will work together to support the distribution industry.

Madoka Shimizu (front row, center)
Store & Distribution System, Sales Group





R&D

Through the pursuit of the most advanced energy technology, Fuji Electric creates a product family contributing to the realization of a safe, serene and sustainable society.

R&D Policy

We position R&D and its resultant technological innovation as the driving force in our growth, and conduct research into the power device and power electronics technologies that are our strong points. Through energy creation technologies and energy saving technologies that take the above as core technologies and look ahead to the next generation, we are putting effort into research and development of technologies for generating and using electricity and thermal energy with optimal efficiency and safety.

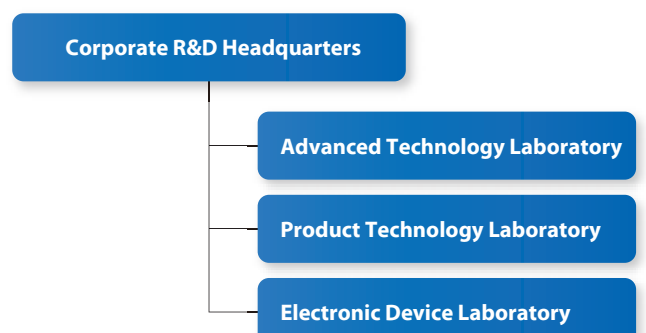
R&D Policy

- Pursue and expand strong core technologies centered on power electronics technology**
- Focus R&D resources on energy technologies to contribute to the realization of sustainable smart communities**
- Promote globalization of R&D and open innovation to become Global Fuji Electric**

R&D Structure

In order to focus further on the energy field, corporate R&D Headquarters in Fuji Electric plays a central role in developing core technologies and inventing new products. We develop new products with our core technologies, such as semiconductors, power electronics, control, and measuring instruments, and also by taking advantage of these synergies. Furthermore, we are creating leading-edge technologies for the future. Fuji Electric is rapidly developing new products designed for global markets, in all fields of energy related to electricity and heat.

Research and Development Organization Chart



Research and Development Successes

Fuji Electric will focus on development of power semiconductors leveraging SiC to realize dramatic improvements in size and power consumption in power electronics.

The field of power electronics, including PCSs*, inverters and motors for electric automobiles, demands reductions in size, weight, and power consumption. In response, Fuji Electric is making efforts to develop power semiconductors using SiC (silicon carbide). Compared with Si (silicon) semiconductors, SiC features low loss, high voltage resistance, and ability to operate at high temperatures, making it suitable for smaller devices.

As PCSs for solar cells are particularly suited to miniaturization, efficient operation, and low power consumption by drawing out SiC's characteristic high efficiency in power conversion, we believe it will contribute greatly to the creation of a low-carbon society.

* PCS = Power Conditioning Subsystem



Yasushi Matsumoto, Ph.D.
Product Technology Laboratory



Hiroshi Kimura
Electronic Device Laboratory



SiC module



SiC Power conditioner

Fuji Electric is taking part in a smart community demonstration project in Kitakyushu City, contributing to the realization of "harmony between energy and the environment".

From 2010 we have been participating in the Ministry of Economy, Trade and Industry's smart community creation project in Kitakyushu City, and from April 2012 have been in charge of verifying the development of the regional energy management system (CEMS*). In this project, we are conducting verification of systems to control the energy supply and demand balance within the region, demonstrating "mechanisms for participation by persons receiving electric power supply (customers)" and "mechanisms for local production and local consumption of renewable energy such as solar and wind power generation."

Looking ahead, we will resolve issues in controlling the supply and demand balance of renewable energy such as solar and wind power generation, and will contribute to the realization of harmony between energy and the environment.

* CEMS = Cluster Energy Management System



Naoki Hayashi
Product Technology Laboratory



Cluster Energy Management System (CEMS)

We are aiming for the development of unique vibration sensors using MEMS*, and their application to diverse fields including seismic measurement.

Amid the heightened disaster prevention awareness of recent years, demand is increasing for structural health monitoring (SHM) to diagnose the safety of structures. Fuji Electric is developing MEMS applied micro-vibration sensors that enable the measurement of the long-period tremors caused by earthquakes etc., or the minute ground or building vibrations that are imperceptible to people. In field experiments conducted within our Tokyo Office, we confirmed that the characteristic frequencies indicating a building's vibrational property are changed depending on earthquake-resistant construction, thus verifying the applicability of the MEMS applied micro-vibration sensors to SHM. Looking ahead, we are aiming for application not only in diagnosis of buildings and bridges, evaluation of seismic isolation and damping equipment, and seismic measurement, but also in the security field as a human presence sensor.

* MEMS = Micro Electro Mechanical Systems



Hironobu Yao
Product Technology Laboratory



Takeshi Suzuki
Advanced Technology Laboratory



MEMS applied micro-vibration sensor



CSR Management

Accomplishing Our Mission with Sincerity as a Good Corporate Citizen in Global Society.

Fuji Electric's CSR Management

We at Fuji Electric set contribution to sustainable development of society as the foundation of our CSR management. Under the Fuji Electric Code of Conduct, our employees and the company share common values and act as one to realize the corporate philosophy.

Fuji Electric Code of Conduct

The Fuji Electric and its employees, from a global perspective, always strive to achieve our corporate mission of "We, The Fuji Electric, pledge as responsible corporate citizens in a global society to strengthen our trust with communities, customers and partners," and endeavor to:

1. Respect and value our customers
2. Respect and value all people
3. Respect and value the global environment
4. Respect and value our shareholders and investors
5. Respect and value interaction with society
6. Respect, value and conform with all applicable laws and regulations

UN Global Compact* Participation

Fuji Electric, as a global corporation, agrees with the 10 principles set forth in the UN Global Compact and pledged participation in February 2010.



*UN Global Compact

The United Nations Global Compact is an initiative proposed by the Secretary-General in 1999. Under commitment from top-level management, companies voluntarily observe and publicly put into practice 10 principles in the areas of human rights, labor, environment, and anti-corruption.

Third-Party Evaluations of CSR Activities

In acknowledgement of our CSR efforts, Fuji Electric has been selected as one of the approximately 300 companies included in the Dow Jones Sustainability Indexes (DJSI) for seven consecutive years since 2005. The DJSI are a family of indexes for leading global SRI (Socially Responsible Investment).



Examples of initiatives based on our Code of Conduct

1. Respect and value our customers

We provide safe and superior products, services, and technological development in response to customers' needs, offering maximum satisfaction to everyone from our customers to the consumers who interact with final products.



24-hour-response call center

To provide customers with safe and superior products and services, we are committed to maintenance of the systems and equipment we supplied, and rapid response in the event of trouble.

2. Respect and value all people

Fuji Electric will work to provide human resource training and a workplace environment that allows all employees to achieve and act under their full potential.



Communication training for supervisors and subordinates

Through initiatives such as support for balancing work with child care and nursing care, Fuji Electric is tackling the creation of better workplace environments that allow the diverse personnel to actively engage in work and fully display their individuality.

3. Respect and value the global environment

We have formulated Environmental Vision 2020 and are undertaking initiatives aimed at environmental conservation and biodiversity.

Environmental Vision 2020



Through means including "provision of products and services that contribute to the environment," "reduction of environmental load in production and logistics," and "enrichment of environmental conservation activities," we are engaging in the protection of the global environment.

4. Respect and value our shareholders and investors

Through sincere and active information disclosure and communication, Fuji Electric is deepening mutual understanding and a relationship of trust with shareholders and investors.



Factory tour for shareholders

Fuji Electric conducts factory tours for shareholders, creating opportunities to experience our manufacturing and products first-hand and to deepen understanding of and closeness to the company.

5. Respect and value interaction with society

Fuji Electric will contribute to the development of local communities through positive interaction.



Visiting a shelter for women and children in the Philippines

We actively cooperate with NPOs, NGOs and similar organizations so as to develop our social contribution activities globally, focusing on themes such as environmental conservation and support for nurturing next generations.

6. Respect, value and conform with all applicable laws and regulations

As a whole, we practice thorough compliance with laws, regulations, and corporate ethics.



Compliance Training

We conduct compliance training at all domestic and overseas subsidiaries with the goal of maintaining thorough global compliance. We are strengthening our oversight, audit, and education programs concerning global social norms, such as prohibitions on prejudice and human rights violations.

Fuji Electric continues to evolve in step with the times and with society, with technology as our driving force.

Corporate History

1923

Fuji Electric Manufacturing Co., Ltd. Established

Established as a capital and technology alliance between Japan Furukawa Electric Co., Ltd. and German Siemens AG. The result is a company with characteristics inherited from industry in both countries.



Company emblem, FS mark

1924

Started operation of the Kawasaki factory



1935

Established Fuji Tsushinki Manufacturing Co., Ltd. (present Fujitsu Limited) by spinning off the Telephone Department

1942

Started operation of the Matsumoto factory

1943

Started operation of the Fukiage and Toyoda factories

1944

Started operation of the Mie factory

1961

Started operation of the Chiba factory

1968

Merged with Kawasaki Denki Seizo Co., Ltd. and commenced operations at the Kobe and Suzuka factories

1973

Started operation of the Otawara factory

1978

Established its symbol mark



1920

1930

1940

1950

1960

1970

1924

Started manufacturing electrical machinery

1925

Started transformer production

1927

Began electric fan production

1930

Launched mercury-vapor rectifier production



1933

Started expansion circuit breaker production

1936
Built its first hydraulic turbine, 4,850HP Francis Turbine



1937

Began watt-hour meter production

1954

Started ultra-compact magnet switch production



Began volume production of selenium rectifiers

In response to exploding demand for televisions and radios, Fuji Electric began volume production of selenium rectifiers, electronic components that convert alternating current (AC) to direct current (DC). The company soon took an 80%-90% share of the domestic selenium rectifier market.



1955

Started manufacturing juicers

Sales of juicers took off from around 1961 on the back of nationwide health movement (campaign).



Full-scale foray into thermal power plant business

Signed a contract with Siemens AG for technology transfer of the steam turbine manufacturing. Subsequently delivered the first super-critical, variable pressure turbine in Japan, which was one of the largest in the country at the time. This move to import European technology marked a change of tack in a domestic power generation market dominated by US technology.

1958

Delivered the first electronic instrumentation system to a water treatment plant in Japan

1959

Began manufacturing silicon diodes

1965

Electric propulsion system fitted to Antarctic exploration vessel Fuji



1966

Tokai nuclear power station began operation

Facility equipped with nuclear pressure vessels and other components made by Fuji Electric



1967

Developed earth-leakage circuit breakers

1969

Began production of vending machines

Used know-how as a vendor of refrigerated milk showcases to move into vending machines. Delivered 230 beverage vending machines to the 1970 Osaka World Exposition, prompting the wider spread of domestically made vending machines.



1971

Developed centralized monitoring and control systems for power utility companies

First computerized control system in Japan, using the FACOM-R mini-computer

Started hybrid IC manufacture

1973

Began production of selenium photoconductive drums

1976

Started manufacturing general-purpose inverters

First in the industry to develop general-purpose inverters. Led the market in creating smaller, more responsive and functional components, resulting in their adoption in a range of fields due to their energy-saving characteristics.



Developed transistor inverter FRENIC 5000G

1978

Began research into amorphous solar cells

Technology and Product History

1991

- Laid down 21st Century Vision to stipulate the corporate mission and guiding principles
- Started operation of the Yamanashi factory

1992

Laid down Basic Policies of the Fuji Electric on Environment Protection

1994

Established Fuji Electric Frontier Co., Ltd. (Preferential affiliate company)

Began promoting employment for disabled persons

1996

Fuji Electric Construction Co., Ltd. (current Fuji Furukawa Engineering & Construction Co., Ltd.) listed on the Second Section of the Tokyo Stock Exchange

1999

Introduced the company system

1980

Established Fuji Electric Corporate Research and Development Ltd.

1984

Changed company name to Fuji Electric Co., Ltd.

1980

1990

2000

2010

1981

Developed and commenced manufacture of electric propulsion system for ice-breaking vessel Shirase

1982

Developed 30kW phosphoric acid fuel cell

1985

• 1st generation mini UPS "M-UPS Series" launched



• Released the programmable logic controller "MICREX-F Series"



• Developed 1,000kW phosphoric acid fuel cell

1987

• New IC chip for auto-focus cameras completed

• Developed IGBT module

1989

Realization of EIC integrated control system

1991

Developed 2.5-inch magnetic disks

1992

• Began development of solar cells formed on film substrates

• Completed an ozone-based water treatment system

1993

• Delivered the first generator (600MW output) of Noshiro Power Station

• Completed a ski lift gate system

1994

Successful launch of Japan's first HII rocket

The launch vehicle's power control unit was fitted with an aerospace power transistor made by Fuji Electric.

1995

Successful field experiment of the world's first linear-motor-driven vertical transport systems

1996

Order won for IGBT main conversion devices used in electric railways

(world's first large-capacity flat IGBT)

1998

Delivered 100kW phosphoric acid fuel cell

1999

New mini-UPS "J-Series" launched



2002

Introduced group brands



2003

Changed name owing to shift to pure holding company system
Fuji Electric Holdings Co., Ltd.

2006

Started operation of solar cell factory in Kumamoto Prefecture

2008

• Established METAWATER Co., Ltd. (joint venture with NGK Insulators, Ltd.)

• Fuji Electric FA Components & Systems Co., Ltd. merged operations with Schneider Electric Japan Ltd.

2002

Established biogas-powered fuel cell power generation system

Delivered Japan's first fuel cell cogeneration system (incorporating two 100kW fuel cells) powered by digested sewage sludge gas.

2006

Commenced mass production of film substrate amorphous solar cells

Began mass producing flexible amorphous solar cells based on plastic film substrate.



2007

Started mass production of perpendicular magnetic recording media

Full-scale mass production of world's largest capacity 2.5-inch glass substrate media (160GB/disk), 3.5-inch aluminium substrate media (334GB/disk).



2009

High-voltage drop/dip compensator using a lithium-ion capacitor released.

The world's first embedded lithium-ion capacitor realized environmental load reduction in a significantly smaller package.

2010

Fuji Electric Systems Co., Ltd. merged uninterruptible power supply (UPS) operations with TDK-Lambda Corporation

2010

• Developed a new three-level converter circuit and a new three-level power module, realizing highly efficient electric power conversion



• 140MW geothermal power plant, the largest single-unit capacity in the world, started operation



• High-speed electric vehicle battery charger went on sale



• Delivered micro-grid system to outlying islands of Kyushu and Okinawa, and took part in installation and verification testing

• Development of next-generation SiC module power semiconductor



2011

High-Voltage Inverter with Water-Cooling System "FRENIC 480VM5" went on sale



2012

Development of industrial inverter equipped with next-generation power semiconductor SiC-SBD, a first in Japan



2011

• Establishment of GE Fuji Meter Co., Ltd. (joint venture with General Electric)

• Changed company name:

Fuji Electric Co., Ltd.
(Merger of Fuji Electric Holdings Co., Ltd. with Fuji Electric Systems Co., Ltd.)

2012

Introduced new brand statements

Innovating Energy Technology

Consolidated Subsidiaries (Japan)

Fuji Electric FA Components & Systems Co., Ltd.

Development, manufacture, and sales of electrical distribution & control equipment
Mitsui Sumitomo Bank Ningyo-cho Bldg., 5-7, Nihonbashi Odemma-cho, Chuo-ku,
Tokyo 103-0011, Japan
Tel. +81-3-5847-8000

Fuji Furukawa Engineering & Construction Co., Ltd.

Plant construction, air conditioning and electricity, construction and auxiliary
construction, and planning and performance of telecommunication construction
Solid Square West Tower, 580 Horikawa-cho, Saiwai-ku, Kawasaki-shi, Kanagawa
212-0013, Japan
Tel. +81-44-548-4500

Fuji Electric Technica Co., Ltd.

Sales, repair services, and maintenance services for power distributors, control
equipment, drive systems, and motor products
Mitsui Sumitomo Bank Ningyo-cho Bldg., 5-7, Nihonbashi Odemma-cho, Chuo-ku,
Tokyo 103-0011, Japan
Tel. +81-3-5847-8070

Fuji Electric Finance and Accounting Support Co., Ltd.

Handling of accounts receivable and accounts payable functions for finance
departments of Fuji Electric and its group companies; loan provision and other
financial services for Fuji Electric Group companies
Gate City Ohsaki, East Tower, 11-2, Osaki 1-chome, Shinagawa-ku, Tokyo 141-0032,
Japan
Tel. +81-3-5435-7330

Hohei Denki Co., Ltd.

Sales, installation, and repair of electrical machinery, control systems, and electronic
components
6-60, Niitaka 2-chome, Yodogawa-ku, Osaka-shi, Osaka 532-0033, Japan
Tel. +81-6-6394-1111

Hokkaido Fuji Electric Co., Ltd.

Sales, installation, and repair of electrical machinery, control systems, and electronic
components
1-118, Odori Higashi 7-chome, Chuo-ku, Sapporo-shi, Hokkaido 060-0041, Japan
Tel. +81-11-221-5511

Fuji Office and Life Service, Co., Ltd.

Printing, copying, document management, advertising, design, travel, insurance, real
estate, salary computation outsourcing, and manpower dispatching
Gate City Ohsaki, East Tower, 11-2, Osaki 1-chome, Shinagawa-ku, Tokyo 141-0032,
Japan
Tel. +81-3-5435-7311

Chichibu Fuji Co., Ltd.

Manufacture and sales of control equipment
755-1, Ogano, Ogano-machi, Chichibu-gun, Saitama 368-0193, Japan
Tel. +81-494-75-1111

Ibaraki Fuji Co., Ltd.

Manufacture and sales of power distributors and control equipment
471, Shimokido, Shimotsuma-shi, Ibaraki 304-0028, Japan
Tel. +81-296-43-3131

Hohei Plastics Co., Ltd.

Processing of plastics and sheet molding
1-27, Fuji-cho, Yokkaichi-shi, Mie 510-8631, Japan
Tel. +81-59-330-1572

Fuji IT Co., Ltd.

Total solutions for information systems, data control, and electronic information
equipment
TIS Bldg., 4-3, Akebono-cho 2-chome, Tachikawa-shi, Tokyo 190-0012, Japan
Tel. +81-42-540-5170

Shinshu Fuji Electric Co., Ltd.

Development, design, manufacture, and repair of currency handling equipment
2535, Mitakedo, Ueda-shi, Nagano 386-0412, Japan
Tel. +81-268-42-7111

Fuji Electric Power Semiconductor Co., Ltd.

Manufacture of semiconductor devices
18-1, Tsukama 4-Chome, Matsumoto-shi, Nagano 390-0821, Japan
Tel. +81-263-27-7425

Tottori Electric Manufacturing Co., Ltd.

Manufacture of cleanroom equipment and control devices for vehicles
15, Nanei-cho, Tottori-shi, Tottori 689-1121, Japan
Tel. +81-857-53-3111

Fuji Electric IT Center Co., Ltd.

Consulting and training related to the development of computer and network-related
software, computer and network processing, information services, etc.
Gate City Ohsaki, East Tower, 11-2, Osaki 1-chome, Shinagawa-ku, Tokyo 141-0032,
Japan
Tel. +81-3-5435-7300

Fuji Electric Chiba Tech. Co., Ltd.

Maintenance, inspection, repair, etc. of substation equipment; manufacture and sales
of electrical and other machinery and equipment
7, Yahata Kaigandori, Ichihara-shi, Chiba 290-8511, Japan
Tel. +81-436-42-8165

Fuji Electric F-Tech Co., Ltd.

Design, manufacture, and sales of automatic equipment, labor-saving equipment,
dies and jigs, and semiconductor application devices; design, manufacture, and repair
of medical equipment and electric appliances
160-1 Maesuna, Kohnosu-shi, Saitama 369-0198, Japan
Tel. +81-48-548-5571

Hakko Electronics Co., Ltd.

Development, manufacture, and sales of electronic operation board
238 Kamikashiwano-machi, Hakusan-shi, Ishikawa 924-0035, Japan
Tel. +81-76-274-6911

Fuji Electric IT Solutions Co., Ltd.

Sales of computers and communication equipment, development of information
processing systems, and provision of related total solutions
Sotokanda Center Bldg., 15-12, Sotokanda 6-chome, Chiyoda-ku, Tokyo 101-0021,
Japan
Tel. +81-3-5817-5701

Mie Fuji Co., Ltd.

Manufacture of vending machines
1-27, Fuji-cho, Yokkaichi-shi, Mie 510-8631, Japan
Tel. +81-59-330-1616

Fuji Electric Thermo Systems Co., Ltd.

Manufacture, sales, and after-sales services related to induction furnaces, induction
heating equipment, ozonizers, and environment-related equipment
5520, Minami Tamagaki-cho, Suzuka-shi, Mie 513-8633, Japan
Tel. +81-59-383-8833

Fuji Electric FA Service Co., Ltd.

After-sales service and maintenance/inspection, repair, remodeling, and sales of drives
in general, including inverters and motors
5520 Minami Tamagaki-cho, Suzuka-shi, Mie 513-8633, Japan
Tel. +81-59-383-1859

GE Fuji Meter Co., Ltd.

Design, manufacture, sales, maintenance, and repair of electric meters (including
smart meters and meter-related products) used by domestic electric power utilities
and other customers
Gate City Ohsaki, East Tower, 11-2, Osaki 1-chome, Shinagawa-ku, Tokyo 141-0032,
Japan
Tel. +81-3-5435-6340

FESTEC Co., Ltd.

Servicing, maintenance, and inspection of electrical equipment; maintenance work
and construction work contracting
1 Fujimachi, Hino-shi, Tokyo 191-8502, Japan
Tel. +81-42-585-6469

Fuji Electric Tsugaru Semiconductor Co., Ltd.

Manufacture and sales of semiconductor devices
156 Nabekake, Urushikawa, Goshogawara-shi, Aomori 037-0017, Japan
Tel. +81-173-35-5671

Consolidated Subsidiaries (Overseas)

Fuji Electric Europe GmbH

Sales of electrical/electronic machinery and components
Goethering 58, 63067 Offenbach am Main, GERMANY
Tel. +49-69-6690290

Fuji Electric FA (Asia) Co., Ltd.

Sales of electrical distribution and control equipments
Room 2015, 20/F., The Metropolis Tower, 10 Metropolis Drive, Hunghom, Kowloon,
HONG KONG
Tel. +852-2311-8282

Fuji Electric Dalian Co., Ltd.

Manufacture of low-voltage circuit breakers
No.3, The Third Street of Northeast, Dalian Economic & Technical Development
Zone, Dalian 116600, THE PEOPLE'S REPUBLIC OF CHINA
Tel. +86-411-8762-2000

Fuji Electric Taiwan Co., Ltd.

Sales of semiconductor devices, electrical distribution and control equipment, and
drive control equipment
10F, No. 168, Song Jiang Rd., Taipei, TAIWAN, R.O.C. PO#10459
Tel. +866-2-2511-1820

Fuji Electric Corp. of America

Sales of electrical machinery and equipment, semiconductor devices, drive control
equipment, and devices
50 Northfield Avenue, Edison, NJ 08837, U.S.A.
Tel. +1-732-560-9410

Fuji Electric Asia Pacific Pte. Ltd.

Sales of electrical distribution and control equipment, drive control equipment, and
semiconductor devices
171, Chin Swee Rd., #12-01, San Centre, SINGAPORE 169877
Tel. +65-6533-0010

Fuji Electric Philippines, Inc.

Manufacture of semiconductor devices
107 Enterprise Drive, Special Export Processing Zone II, Carmelray, Industrial
Park, Canlubang, Calamba, Laguna, PHILIPPINES
Tel. +63-2-844-6183

Fuji Electric (Malaysia) Sdn. Bhd.

Manufacture of magnetic disk and aluminum substrate for magnetic disk
Lot No. 5, Industrial Zone Phase 1, Kulim Hi-Tech Industrial Park, 09000 Kulim, Kedah
Darul Aman, MALAYSIA
Tel. +60-4-403-1111

Fuji Electric (China) Co., Ltd.

Sales of locally manufactured or imported products in China, and export of locally
manufactured products
F27, International Corporate City, No.3000 Zhongshan North Rd., Shanghai 200063
THE PEOPLE'S REPUBLIC OF CHINA
Tel. +86-21-5496-1177

Fuji Electric (Shenzhen) Co., Ltd.

Manufacture and sales of photoconductors and semiconductor devices
High-technology Industrial Zone, Feng Tang Rd., Fu Yong, Bao An, Shenzhen,
Guangdong 518103, THE PEOPLE'S REPUBLIC OF CHINA
Tel. +86-755-2734-2910

Wuxi Fuji Electric FA Co., Ltd.

Manufacture and sales of low/high-voltage inverters, temperature controllers, gas
analyzers, and UPS
Lot No.28, Xi Mei Road, New District, Wuxi, Jiangsu 214028,
THE PEOPLE'S REPUBLIC OF CHINA
Tel. +86-510-8815-2088

Fuji Electric Hong Kong Co., Ltd.

Sales of semiconductor devices and imaging device products
Unit 227-230, 2nd Floor, Core Building 2, No.1 Science Park West Avenue, Hong Kong
Science Park, Shatin, N.T., HONG KONG
Tel. +852-2664-8699

Shanghai Fuji Electric Switchgear Co., Ltd.

Manufacture and sales of switching equipment, monitoring control appliances, and
related facilities and products
1559 Hangnan Rd., Nanqiao, Fengxian, Shanghai 201400,
THE PEOPLE'S REPUBLIC OF CHINA
Tel. +86-21-5718-1234

Fuji Electric Motor (Dalian) Co., Ltd.

Manufacture of industrial motors
3-2, No.3 Dongbei Street, Dalian Economic & Technical Development Zone, Dalian
116600, THE PEOPLE'S REPUBLIC OF CHINA
Tel. +86-411-8763-6555

Fuji Electric Semiconductor (Malaysia) Sdn. Bhd.

Manufacture of semiconductor devices
Lot No. 4, Industrial Zone Phase 1, Kulim Hi-Tech Industrial Park, 09000 Kulim, Kedah
Darul Aman, MALAYSIA
Tel. +60-4-494-5800

Hoei Hong Kong Co., Ltd.

Sales of electrical/electronic components
Unit 310-311, Mirror Tower, 61 Mody Rd., Tsim Sha Tsui East, Kowloon,
HONG KONG
Tel. +852-2369-8186

Fuji Electric (Changshu) Co., Ltd.

Manufacture and sales of electromagnetic contactors and thermal relays
NO.18, Dongshan Rd., Changshu City, Jiangsu Province 215500
THE PEOPLE'S REPUBLIC OF CHINA
Tel. +86-512-5284-5642

Fuji Electric FA Korea Co., Ltd.

Sales of power distribution and control equipment and drive control equipment
16F Shinsong Bldg., 25-4 Youido-dong, Youngdungpo-gu, Seoul 150-010, KOREA
Tel. +82-2-780-5011

Shanghai Fuji Electric Transformer Co., Ltd.

Manufacture and sales of molded case transformers
1557 Hangnan Rd., Nanqiao Fengxian, Shanghai 201400
THE PEOPLE'S REPUBLIC OF CHINA
Tel. +86-21-5718-7705

Fuji Electric Power Supply (Thailand) Co., Ltd.

Manufacture and sales of small- to medium-size UPS and internal power supplies
60/79 Moo 19 Navanakorn Ind. Est. Phase2 Klong Nueng, Klong Luang, Pathumthani
12120 THAILAND
Tel. +66-0-2909-5998

Fuji Electric France S.A.S.

Manufacture and sales of measurement and control devices
46, rue Georges Besse, ZI du Brezet, 63039 Clermont-Ferrand, Cedex 2, FRANCE
Tel. +33-4-73-98-26-98

Equity-method Affiliates

METAWATER Co., Ltd.

Manufacture and sales of various equipment and electric equipment for facilities in
the water/environment fields; design, construction, and unit contract of various plants
Shroyama Trust Tower, 3-1 Toranomon 4-chome, Minato-ku, Tokyo 105-6029, Japan
Tel. +81-3-6403-7500

METAWATER SERVICE Co., Ltd.

Operation and maintenance work of water supply, sewage, and waste processing
facilities
Tel. +81-52-884-6900

Fuji Furmanite Co., Ltd.

Plumbing sealing (leakage repair) contracting
16-1, Miyauchi 4-chome, Nakahara-ku, Kawasaki-shi, Kanagawa 211-0051, Japan
Tel. +81-44-948-8833

Fuji Furukawa E&C (Thailand) Co., Ltd.

Design and installation contracting for electric facilities construction
2922/218 Charn Issara Tower II, 14th Floor, New Petchburi Rd., Bangkok, Huay
Khwang, Bangkok 10310, THAILAND
Tel. +66-2-308-2703

Domestic Sales and Service Offices

Head Office Region

- 1 Head Office** Tel: +81-3-5435-7111
Kanda Office Tel: +81-3-5816-7901

Hokkaido Region

- 2 Hokkaido Division** Tel: +81-11-261-7231
Donan Branch Tel: +81-143-44-6800
Tomakomai Service Center Tel: +81-144-57-3330
Obihiro Service Center Tel: +81-155-27-1621
Kushiro Service Center Tel: +81-154-32-4888

Tohoku Region

- 3 Tohoku Division** Tel: +81-22-225-5351
Iwate Branch Tel: +81-198-26-5161
Aomori Service Center Tel: +81-17-777-7802
Akita Service Center Tel: +81-18-824-3401
Koriyama Service Center Tel: +81-24-932-0879

Kanto Region

- 4 Shin yokohama Service Center**
 Tel: +81-45-476-7841
Higashikanto Department
 Tel: +81-43-266-7622
Kashima Service Center Tel: +81-299-91-0335
Hitachinaka Service Center
 Tel: +81-29-275-2951
5 Kitakanto Department Tel: +81-48-834-3111
Maebashi Branch Tel: +81-27-251-4577
Matsumoto Branch Tel: +81-263-48-2763

Hokuriku Region

- 6 Hokuriku Division** Tel: +81-76-441-1231
Niigata Branch Tel: +81-25-284-5325
Fukui Service Center Tel: +81-776-21-7170
Hokuriku Office, Chubu Div.
 Tel: +81-76-291-7550

Chubu Region

- 7 Chubu Division** Tel: +81-52-746-1000
Toyoda Department Tel: +81-566-83-9915
Shizuoka Branch Tel: +81-54-280-6673
Mishima Branch Tel: +81-55-976-3331
Hamamatsu Branch Tel: +81-53-413-6161
Mie Branch Tel: +81-59-353-3471

Kansai Region

- 8 Kansai Division** Tel: +81-6-6455-3800
Kobe Department Tel: +81-78-371-3288
Kobe Office, Kobe Service Center
 Tel: +81-78-991-2151
Sennan Service Center Tel: +81-72-466-0570
Tsuruga Service Center Tel: +81-770-22-0262

Chugoku Region

- 9 Chugoku Division** Tel: +81-82-247-4231
Yamaguchi Branch Tel: +81-836-21-3177
Higashichugoku Branch Tel: +81-86-422-0922
Shunan Service Center Tel: +81-834-32-1780
Fukuyama Service Center Tel: +81-84-957-0747

Shikoku Region

- 10 Shikoku Division** Tel: +81-87-851-9101
Matsuyama Branch Tel: +81-89-933-9100
Kochi Branch Tel: +81-88-824-8122
Tokushima Branch Tel: +81-88-657-4110

Kyushu / Okinawa Region

- 11 Kyushu Division** Tel: +81-92-262-7800
Kokura Branch Tel: +81-93-562-2323
Ooita Branch Tel: +81-97-532-9161
Nagasaki Branch Tel: +81-95-822-6165
Kumamoto Branch Tel: +81-96-334-7781
Miyazaki Branch Tel: +81-985-24-7281
Kagoshima Branch Tel: +81-99-286-1234
12 Okinawa Division Tel: +81-98-862-8625

Main Domestic Manufacturing Sites

- 1 Kawasaki Factory**
 1-1, Tanabeshinden, Kawasaki-ku, Kawasaki-shi, Kanagawa 210-9530
 Products: Steam turbines, waterwheels, generators, electric motors, nuclear power plant equipment, electric dust collectors, etc.
- 2 Suzuka Factory**
 5520, Minamitamagaki-cho, Suzuka-shi, Mie 513-8633
 Products: General-purpose inverters, servo systems, motors, generators, etc.
- 3 Matsumoto Factory**
 4-18-1 Tsukama, Matsumoto-shi, Nagano 390-0821
 Products: Semiconductor devices, photoconductors
- 4 Yamanashi Factory**
 221-1 Iino, Minami-Alps-shi, Yamanashi 400-0222
 Products: Semiconductor devices
- 5 Kumamoto Factory**
 4003-1 Koei, Nankanmachi, Tamana-gun, Kumamoto 861-0814
 Nankan Tobu Industrial Park
 Products: Solar cells
- 6 Tokyo Office**
 1 Fujimachi, Hino-shi, Tokyo 191-8502
 Products: Distributed controllers, data transmission equipment, guard/control monitoring equipment, distribution boards, radiation equipment and systems, IMM, MEMS, measurement instruments, sensor instruments

- 7 Kobe Factory**
 4-1-1, Takatsukadai, Nishi-ku, Kobe, Hyogo 651-2271
 Products: Power distributors, control equipment, control devices for railcars, high-voltage inverters, uninterruptible power supply systems, etc.
- 8 Chiba Factory**
 7 Yahatakaigandori, Ichihara-shi, Chiba 290-8511
 Products: Transformers, switching devices, rectifiers, fuel cells, etc.
- 9 Tsukuba Factory**
 36-1 Kasuminosato, Ami-machi, Inashiki-gun, Ibaraki 300-0396
 (Matsumoto Production Dept.)
 4010-31 Minami-Nishihara, Wada, Matsumoto-shi, Nagano 390-1242
 Products: Uninterruptible power supply systems, generators, switching power supplies
- 10 Fukiage Factory**
 1-5-45 Minami, Konosu-shi, Saitama 369-0192
 Products: Magnetic switches, command switches, high-voltage vacuum circuit breakers, electric power management devices, control relays, safety devices

- 11 Otawara Factory**
 1043 Nakadawara, Ohtawara-shi, Tochigi 324-8510
 Products: Earth-leakage circuit breakers, molded-case circuit breakers, timers, counters, gas-related equipments, limit switches

- 12 Mie Factory**
 1-27 Fujichou, Yokkaichi-shi, Mie 510-8631
 Products: Vending machines, Cold chain equipments



Corporate Outline

Company Name:

FUJI ELECTRIC CO., LTD.

Established:

August 29, 1923

Registered Address:

1-1, Tanabeshinden, Kawasaki-ku, Kawasaki-shi,
Kanagawa 210-9530, Japan

Head Office:

Gate City Ohsaki, East Tower, 11-2, Osaki 1-chome,
Shinagawa-ku, Tokyo 141-0032, Japan

Capital Stock:

¥47.5 billion (Year ended March 31, 2012)

Number of Employees (consolidated)

24,973 (As of March 31, 2012)

Net Sales (consolidated)

¥703.5 billion (Year ended March 31, 2012)

Management (As of October 1, 2012)

Directors

Michihiro Kitazawa

President and Chairman of the
Board of Directors

Yoshio Okuno

Representative Director

Hisao Shigekane

Representative Director

Hiroaki Kurokawa

Outside Director

Motoyuki Suzuki

Outside Director

Takashi Okimoto

Outside Director

Michio Abe

Director

Takamichi Hamada

Director

Naoto Yoneyama

Director

Auditors

Keiichi Hirata

Standing Auditor

Toshio Shinozaki

Standing Auditor

Takahiko Ito

Outside Auditor

Yoshiki Sato

Outside Auditor

Akiko Kimura

Outside Auditor

Executive Officers

Michihiro Kitazawa

President and Chairman of the
Board of Directors
General Management

Yoshio Okuno

Executive Vice President and
Elected Corporate Director
Assistant to the President,
Sales Management
Corporate General Manager,
Global Business Group

Hisao Shigekane

Executive Vice President and
Elected Corporate Director
Assistant to the President
Corporate General Manager,
Corporate Management Planning
Headquarters
General Manager, Export
Administration Office
Compliance Management
In charge of crisis management

Michio Abe

Senior Managing Executive Officer
Corporate General Manager,
Production & Procurement Group

Takamichi Hamada

Senior Managing Executive Officer
In charge of external affairs and
marketing

Naoto Yoneyama

Managing Executive Officer
Corporate General Manager,
Power & Social Infrastructure
Business Group
In charge of construction business

Kenzo Sugai

Executive Officer
Corporate General Manager, Sales
Group

Takashi Kusaka

Executive Officer
Corporate General Manager,
Industrial Infrastructure Business
Group

Motofumi Matsumura

Executive Officer
Corporate General Manager,
Power Electronics Business Group

Kuniaki Yanagisawa

Executive Officer
Corporate General Manager,
Electronic Devices Business Group

Hidehiko Asahi

Executive Officer
Corporate General Manager, Food
& Beverage Distribution Business
Group

Naoya Eguchi

Executive Officer
Corporate General Manager,
Corporate R&D Headquarters

Toshihiko Ishihara

Executive Officer
General Manager, Human
Resources and General Affairs
Office

Junichi Matsumoto

Executive Officer
General Manager, Corporate
Finance Office, Corporate
Management Planning
Headquarters

Fumio Ito

Executive Officer
General Manager, ED&C Division,
Power Electronics Business Group
President and Representative
Director, Fuji Electric FA
Components & Systems Co., Ltd.



This mark symbolizes the commitment of Fuji Electric to environmental protection.

FE Fuji Electric Co., Ltd.

Gate City Ohsaki, East Tower, 11-2 Osaki 1-chome, Shinagawa-ku, Tokyo 141-0032, Japan
Tel: +81-3-5435-7111 <http://www.fujielectric.com>



This corporate profile is printed on paper certified by the Forest Stewardship Council® (FSC) with "100% vegetable oil ink" for "waterless printing".