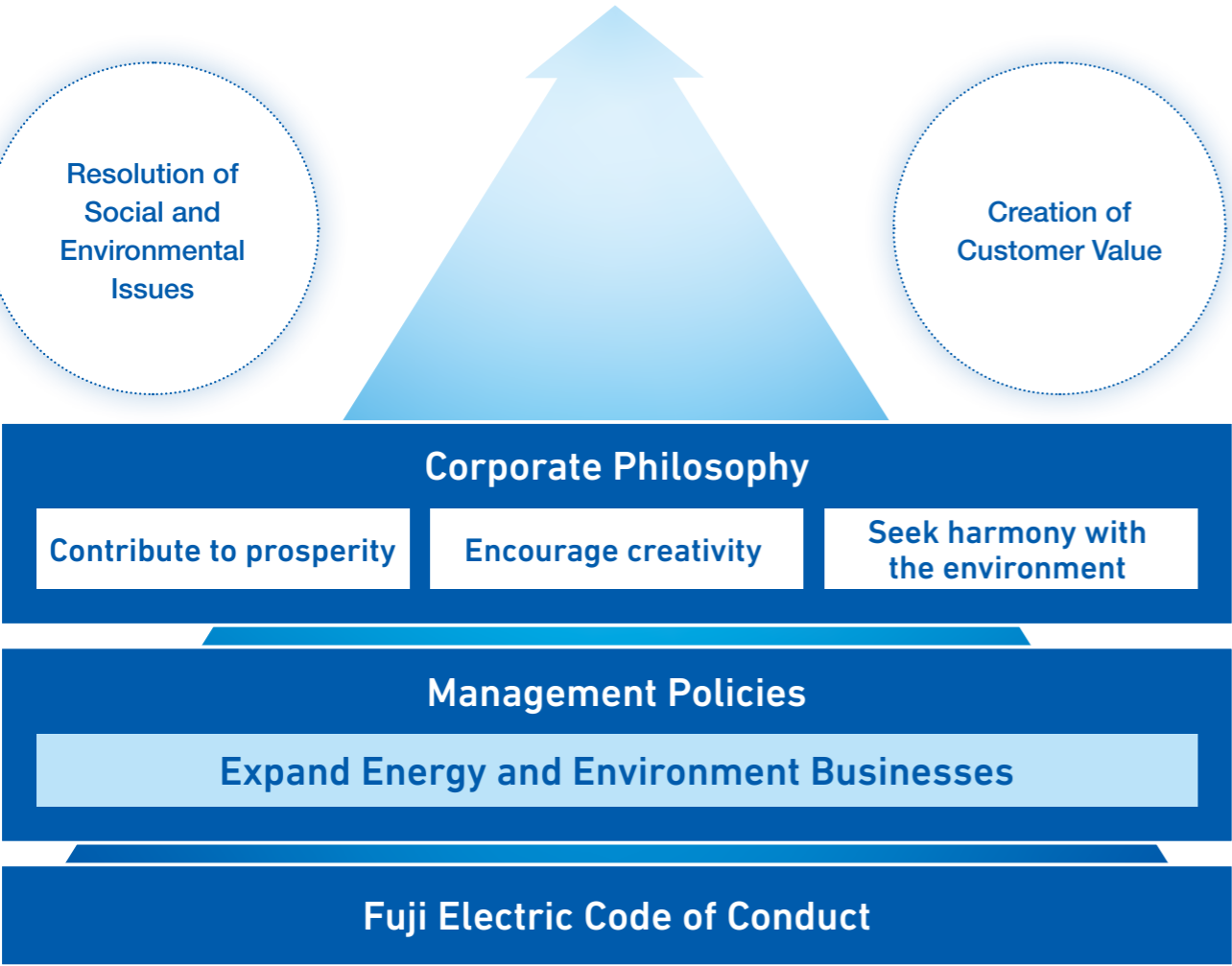


Fuji Electric's Reason for Existence

Fuji Electric's corporate philosophy hinges on a mission to contribute to prosperity, encourage creativity, and seek harmony with the environment, while the Company's management policies are centered on the notion of contributing to society through its energy and environment businesses. By putting this corporate philosophy and management policies into practice based on its Corporate Code of Conduct, which sets forth guidelines for the conduct of employees, Fuji Electric and its employees, together with customers and business partners, will aim to resolve social and environmental issues, create customer value, and contribute to the creation of a responsible and sustainable society.



Contribute to the Creation of a Responsible and Sustainable Society



Corporate Philosophy

We, Fuji Electric, pledge as responsible corporate citizens in a global society to strengthen our trust with communities, customers and partners.

- Contribute to prosperity
- Encourage creativity
- Seek harmony with the environment

Slogan To be enthusiastic, ambitious and sensitive.

Management Policies

1. Through our innovation in energy and environment technology, we contribute to the creation of a responsible and sustainable society.
2. Achieve further growth through our global business expansion.
3. Maximize our strengths as a team, respecting employees' diverse ambition.

Fuji Electric Code of Conduct

In order to practice our corporate philosophy to fulfill social responsibility and act with high ethical standards while understanding and complying with relevant laws, regulations, international rules, and the spirit of such regulations and rules, both domestically and abroad, Fuji Electric and its employees have defined this code as a foundation for decision-making and behavior.

- | | |
|---|--|
| 1. Respect and value all people | 6. Respect and value interaction with society |
| 2. Respect and value our customers | 7. Make global compliance a top priority |
| 3. Respect and value our business partners | 7-1. Thorough compliance |
| 4. Respect and value our shareholders and investors | 7-2. Thorough risk management |
| 5. Respect and value the global environment | 8. Top management will thoroughly practice this standard |

Corporate Code of Conduct
<https://www.fujielectric.com/about/corporate/detail/conduct.html>



Brand Statement

Innovating Energy Technology

Brand Promise

Through our pursuit of innovation in electric and thermal energy technology, we develop products that maximize energy efficiency and lead to a responsible and sustainable society.

Business Areas and Strengths

Our energy and environment businesses are built around four core technologies, with a focus on power semiconductors and power electronics. We have the strength to offer system solutions to customers who support industrial and social infrastructure, from the energy supply side to the demand side. Through these capabilities, we contribute to the creation of clean energy, the stable supply of energy, energy savings, and automation.

Energy and Environment Businesses

Clean energy Stable supply

Energy



Power generation Energy management Substation systems Power supply and facility systems Equipment construction



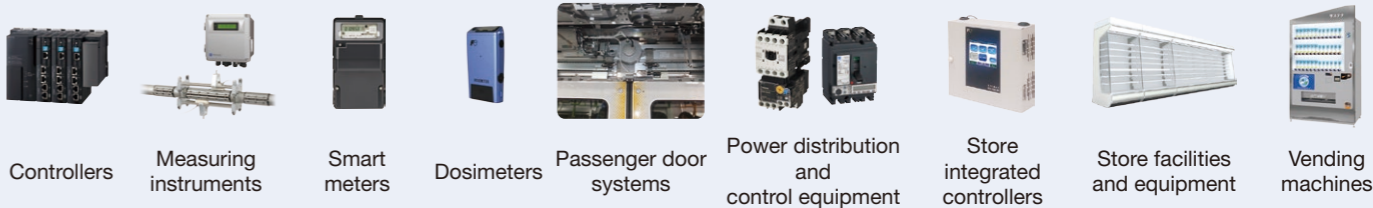
Steam turbines Power conditioning systems Switchgear Transformers Switchgear and controlgear Uninterruptible power systems Inverters Motors Servo systems

Energy savings Automation

Industry



Automation Social solutions IT Solutions ED&C components



Controllers Measuring instruments Smart meters Dosimeters Passenger door systems Power distribution and control equipment Store integrated controllers Store facilities and equipment Vending machines

Food and Beverage Distribution

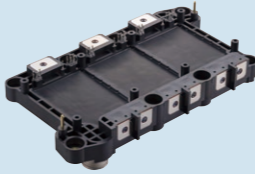
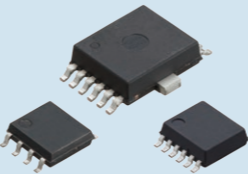
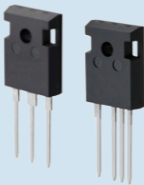


Store distribution Vending machines

Semicon ductors



Industrial field



Automotive field

Core technologies

Power semiconductors

Power electronics

Measurement and control technology

Heating and cooling technology

Priority SDGs to Be Addressed through Our Businesses



Spread of renewable energy use
Improvement of energy efficiency



Reduction of CO₂ emissions from industrial processes
Reinforcement of social and industrial infrastructure



Building safe and secure urban infrastructure services
Development of sustainable transport systems



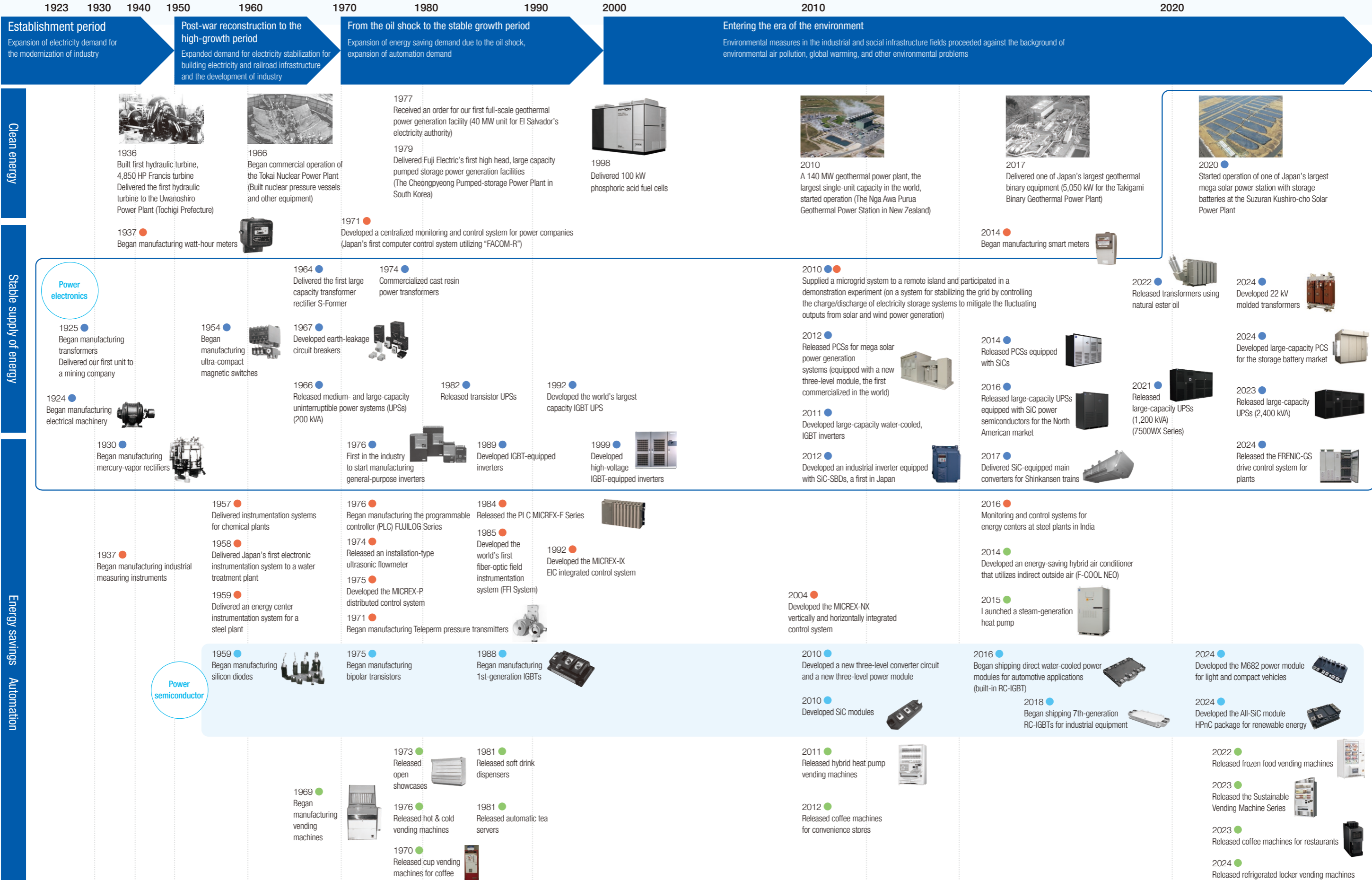
Efficient use of natural resources
Rigorous management and reduction of emissions of chemical substances and waste



Reducing society's CO₂ emissions through products
Reducing GHG emissions through production

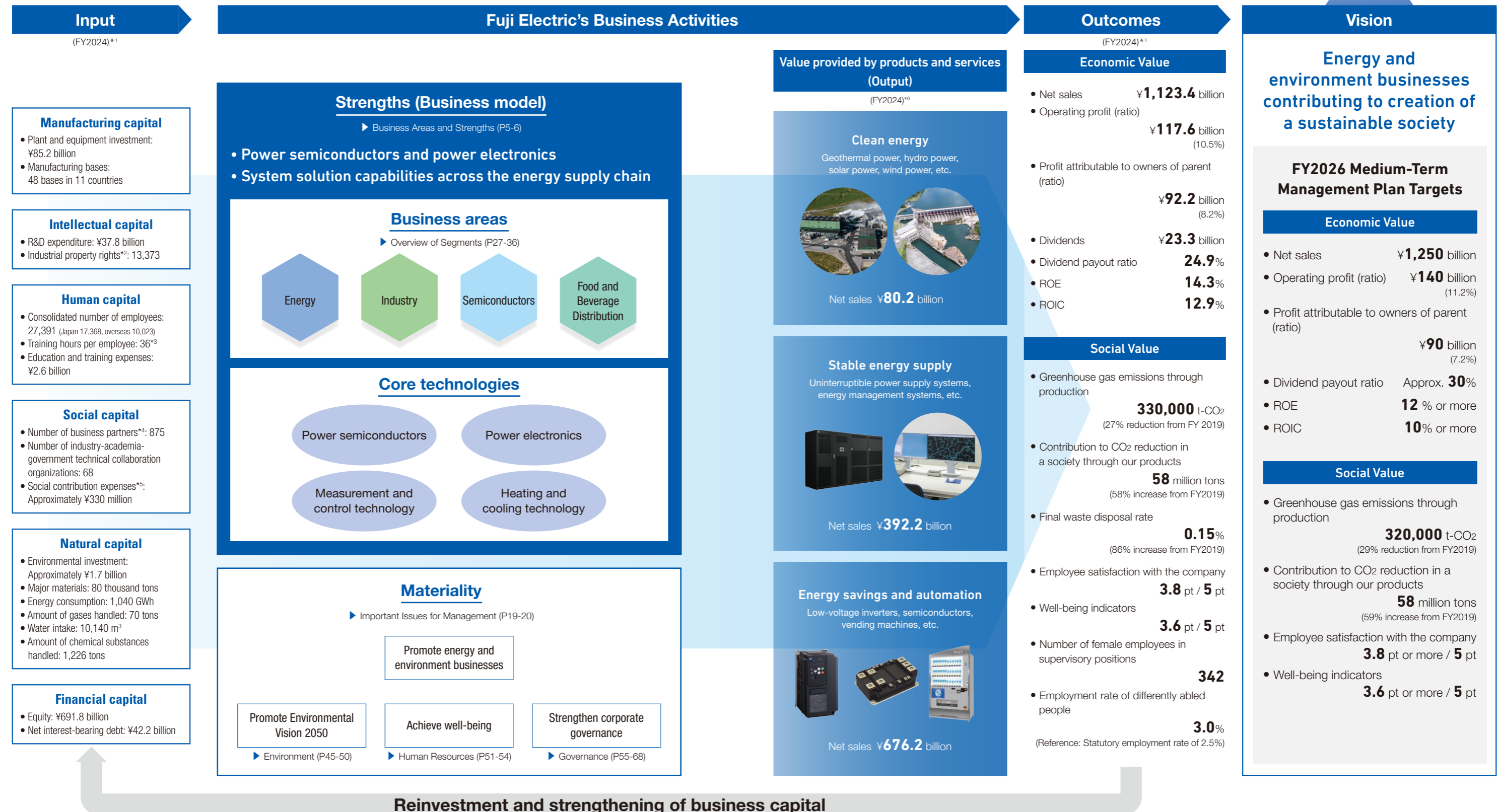
History of the Energy and Environment Businesses

Since its founding in 1923, Fuji Electric has continuously refined its core technologies, focusing on power semiconductors and power electronics. Over the years, we have developed and evolved products that contribute to clean energy, the stable supply of energy, energy savings, and automation.



Value Creation Process

Through our energy and environment businesses, Fuji Electric, as a leading company in power electronics, provides products and services that contribute to clean energy, the stable supply of energy, and energy savings. By creating both economic and social value, we aim to contribute to the creation of a sustainable society, maintain the trust of our stakeholders, and continuously enhance our corporate value.



*1 The figures are on a consolidated basis

*2 Industrial property rights: Patent rights, utility model rights, design rights, and trademark rights

*3 Training hours per employee: Based on totals for Fuji Electric Co., Ltd. and Fuji Electric FA Components & Systems Co., Ltd.

*4 Number of business partners: Number of business partners accounting for the top 80% of purchases in the three years up to FY2024

*5 Social contribution expenses: Expenses related to community activities, promotion of science and technology, promotion of school education, international exchanges, education, etc.

*6 Net sales are calculated based on amounts before elimination and adjustment of inter-segment transactions.