

THE INVERTER



VIII. Application Example

8.1 Application Example

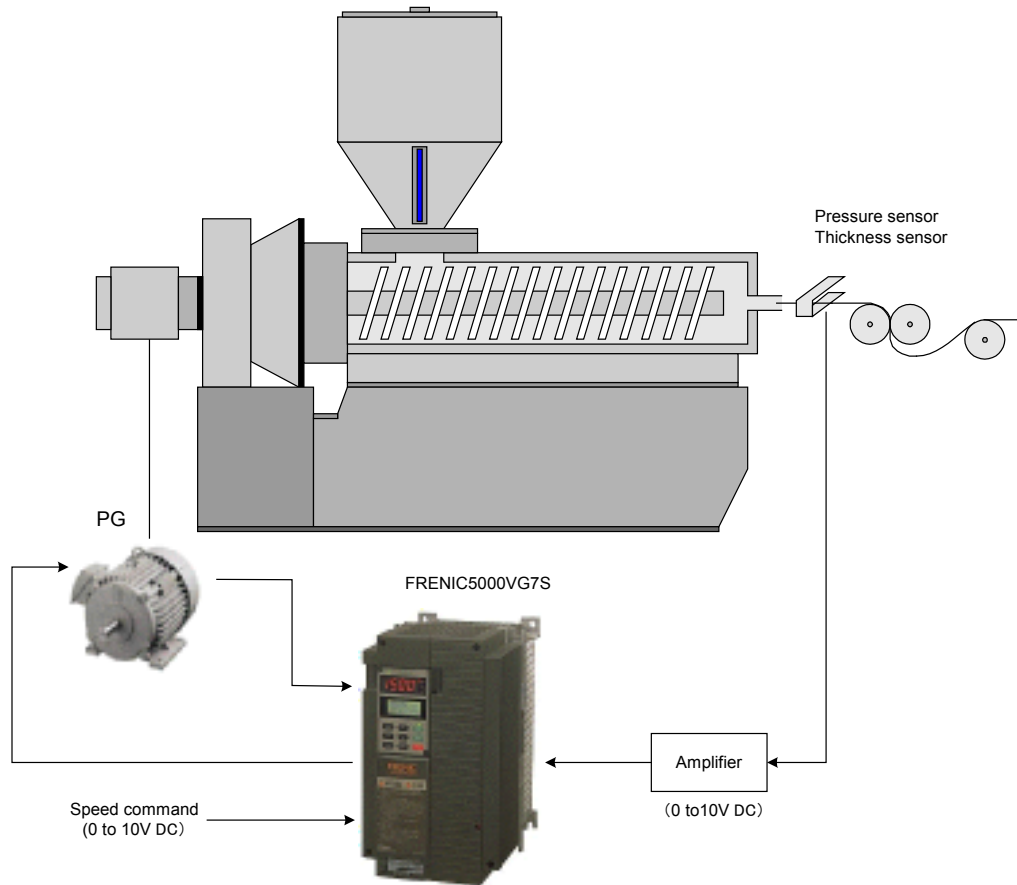
8.2 Application Example Using UPAC

8. Application Example

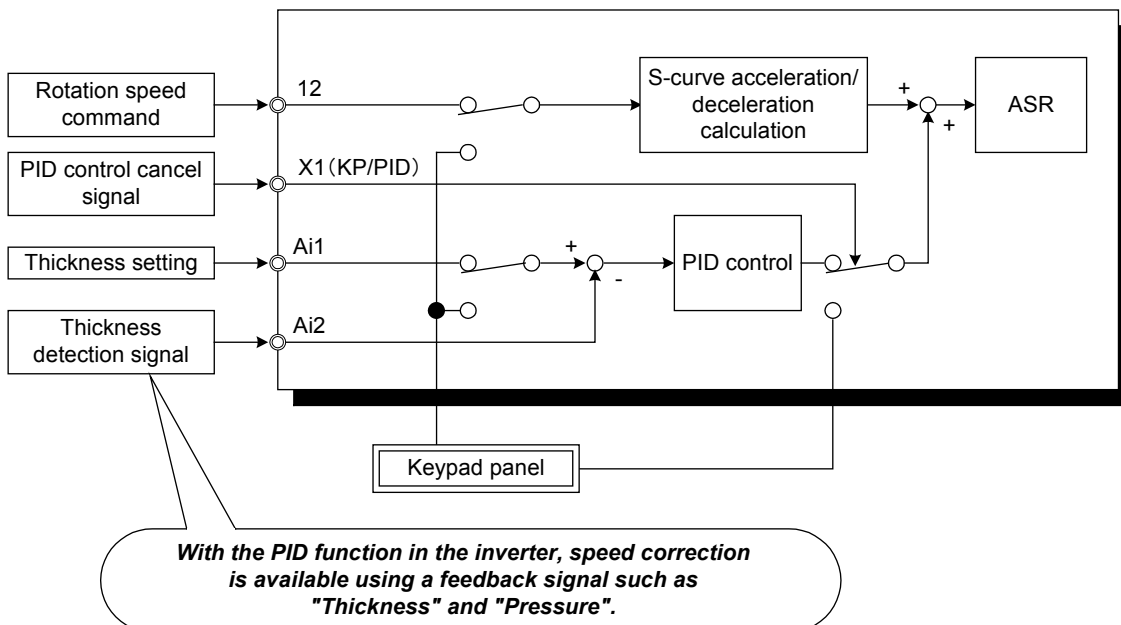
8.1 Application Example Using Standard Function

8.1.1 Extruder

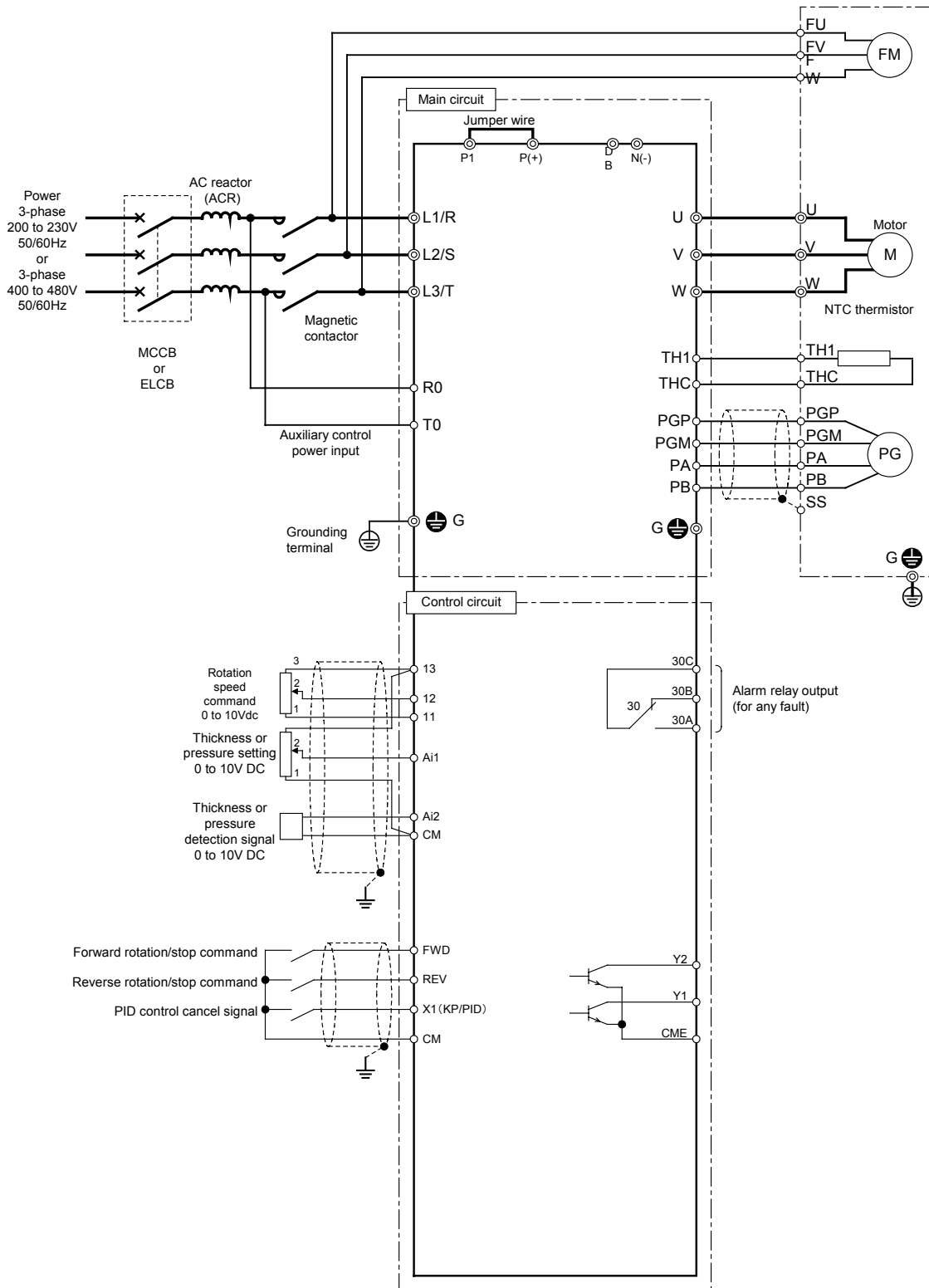
(1) General configuration



(2) Control configuration

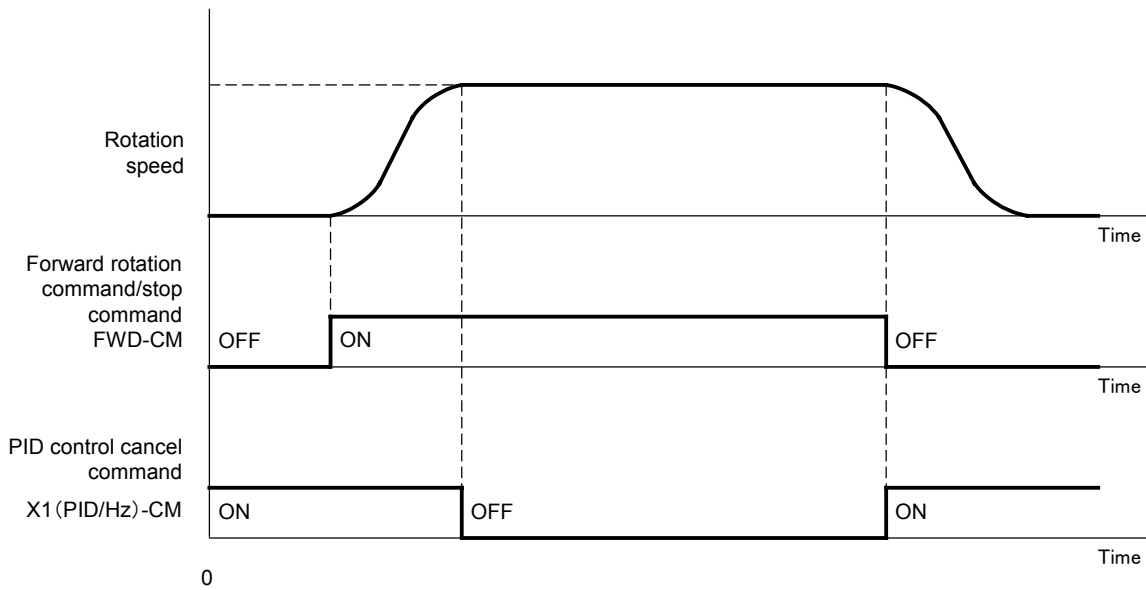


(3) Connection diagram



8. Application Example

(4) Time chart



(5) Tips

Review and configure the system based on the following points:

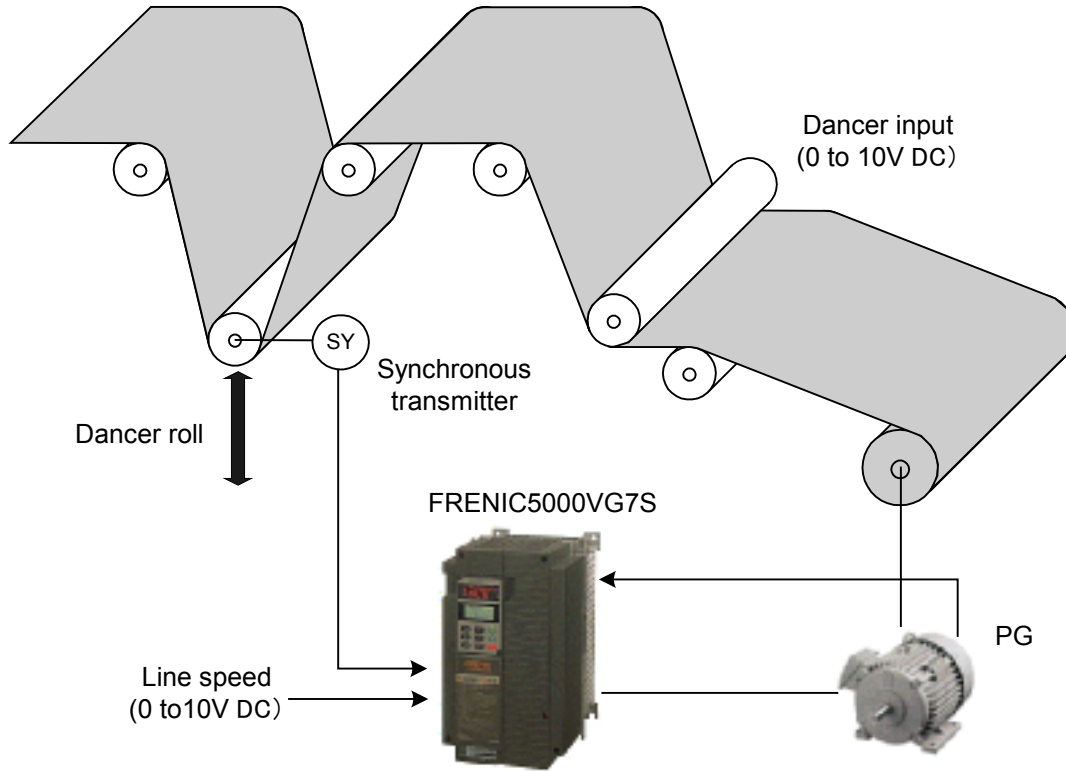
- Constant extrusion quantity is controlled by the PID control function built into the inverter.
- Good extrusion can be controlled with low torque ripple.

- MEMO -

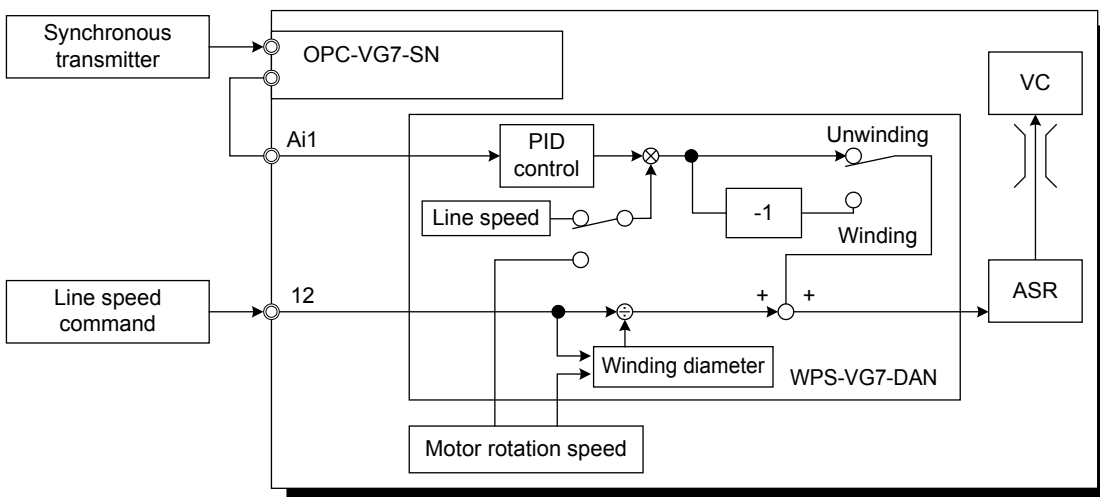
8.2 Application Example Using UPAC

8.2.1 Winder (Dancer Control)

(1) General configuration

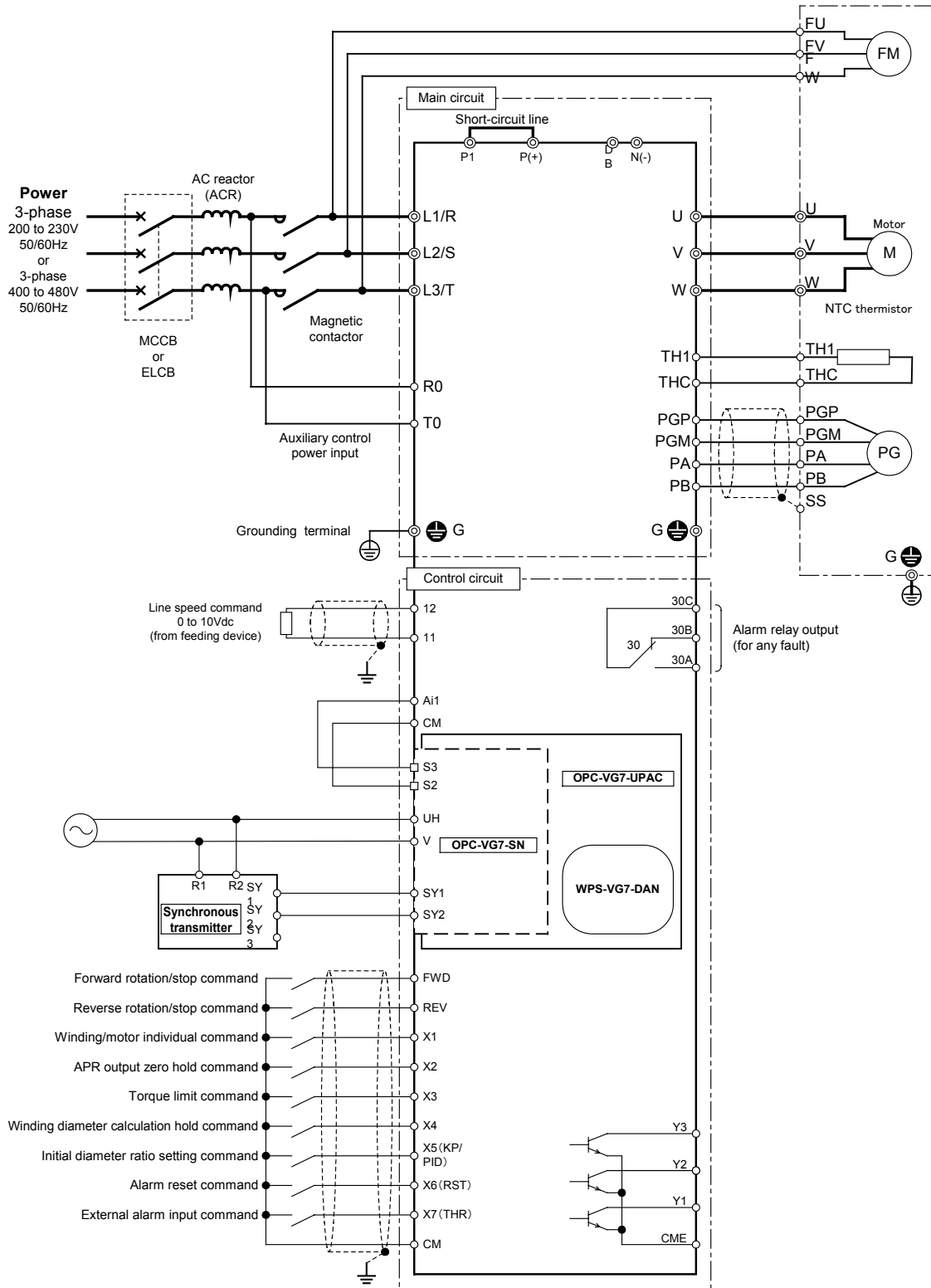


(2) Control configuration



8. Application Example

(3) Connection diagram



(4) Option

The following options are required:

- Option card: OPC-VG7-UPAC, OPC-VG7-SN
- Package software: WPS-VG7-DAN

(5) Tips

Review and configure the system based on the following points:

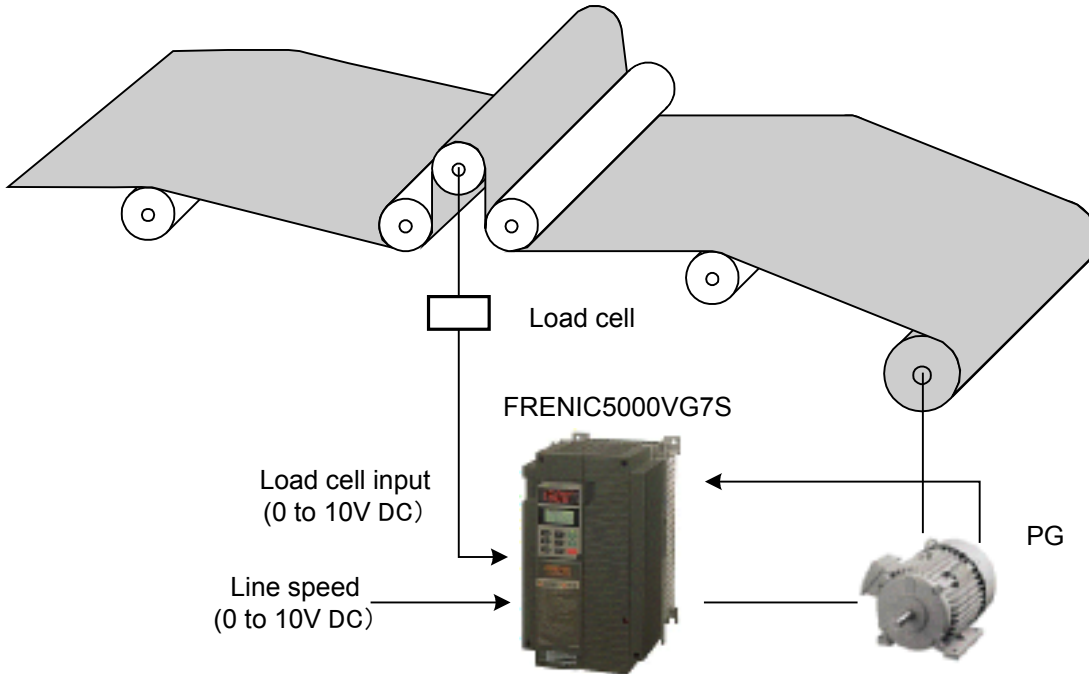
- Control of constant circumferential speed for winding drum: Correct the winding speed with the winding diameter.
- Control of taper in winding: Correct the winding speed with the specified taper.

- MEMO -

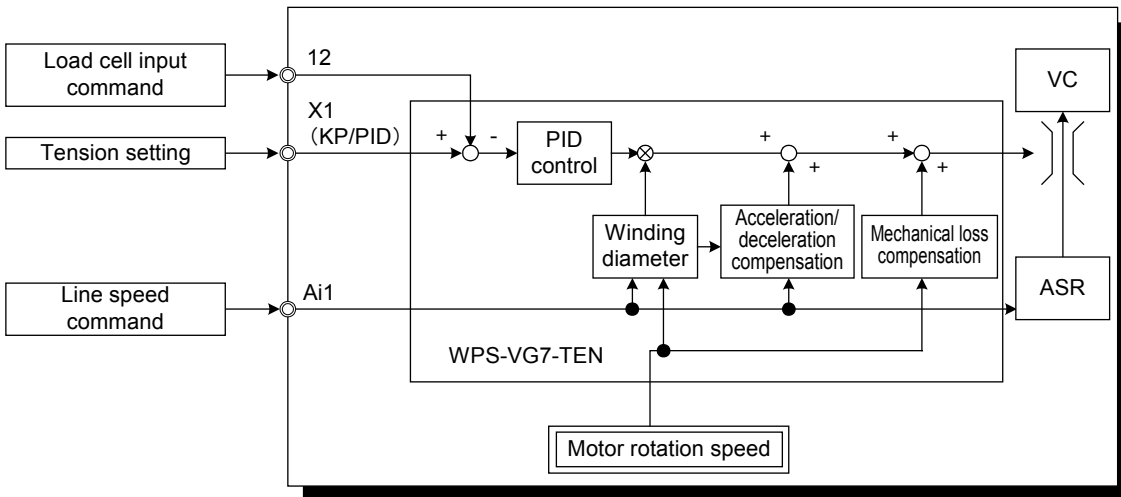
8. Application Example

8.2.2 Winder (Tension Control)

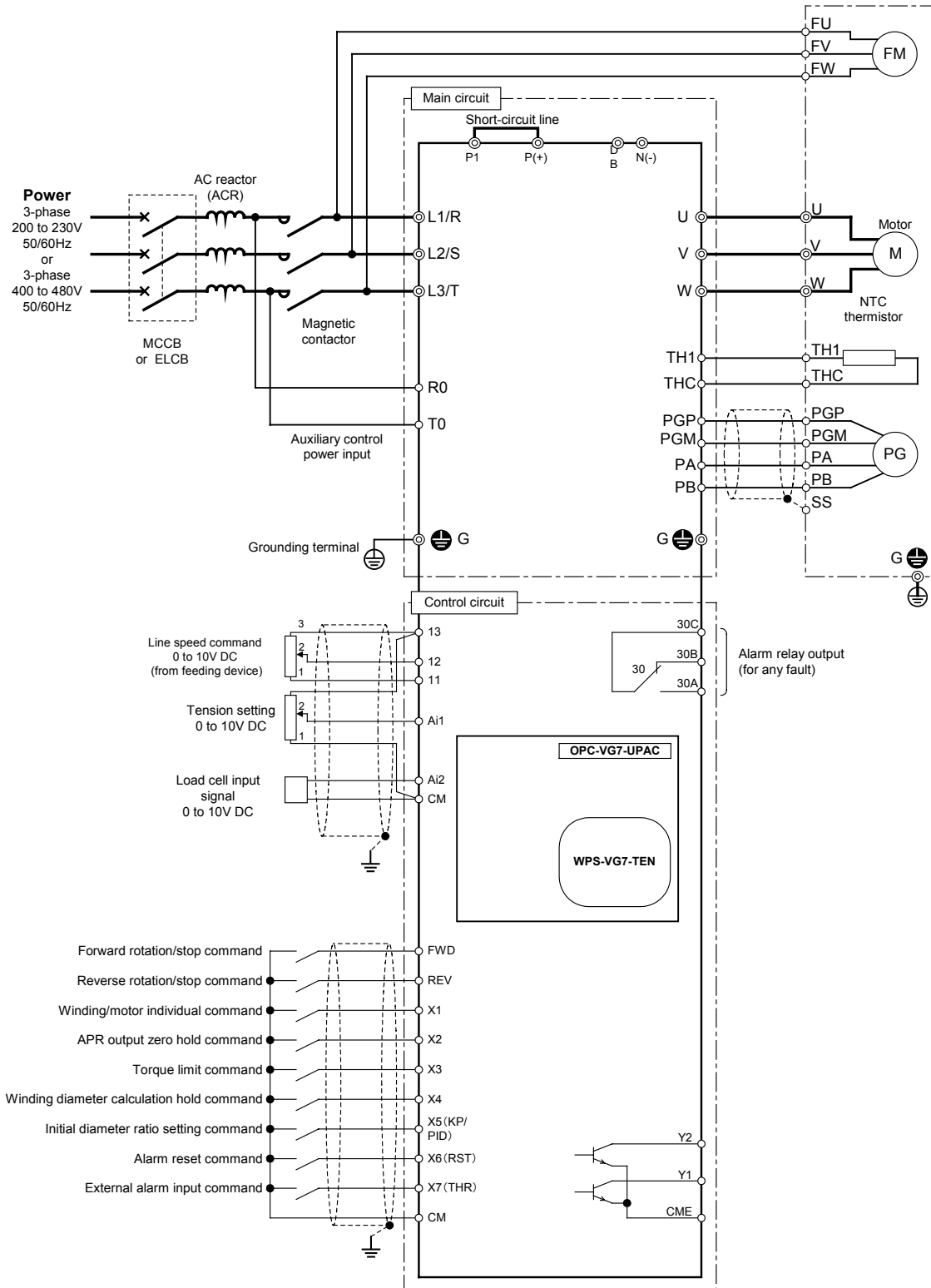
(1) General configuration



(2) Control configuration



(3) Connection diagram



8. Application Example

(4) Option

The following options are required:

- Option card: OPC-VG7-UPAC
- Package software: WPS-VG7-TEN

(5) Tips

Review and configure the system based on the following points:

- Control of constant circumferential speed for winding drum: Correct the winding speed with the winding diameter.
- Control of taper in winding: Correct the winding with the specified taper.

- MEMO -