

"ORANGE LINE" AC Motor Starters, DC Operated



■ NON-REVERSING MOTOR STARTERS UL File No. E42419, E44592 CSA File No. LR20479

1 Phase Ratings		3 Phase Ratings				AC1	Qty. of Auxiliary Contacts	Part Number	Fuji Type	Frame Size
120	240	200 208	220 240	440 480	550 600					
1/3	1	2	2	5	5	11	1	4GW0A0#*10K	SW-03/G2E	0A
1/3	1	3	3	5	5	13	1	4GW0F0#*10K	SW-0/G2E	0F
1/3	1	3	3	5	5	13	2	4GW0G0#*11K	SW-05/G2E	0G
1	2	5	5	7 1/2	7 1/2	20	1	4GW0Q0#*10K	SW-4-0/G2E	0Q
1	2	5	5	10	10	20	1	4GW0R0#*10K	SW-4-1/G2E	0R
1	2	5	5	10	10	20	2	4GW0H0#*11K	SW-5-1/G2E	0H

■ REVERSING MOTOR STARTERS UL File No. E42419, E44592 CSA File No. LR20479

1 Phase Ratings		3 Phase Ratings				AC1	Qty. of Auxiliary Contacts	Part Number	Fuji Type	Frame Size
120	240	200 208	220 240	440 480	550 600					
1/3	1	2	2	5	5	11	1	4GX0A0#*10K	SW-03RM/G2E	0A
1/3	1	3	3	5	5	13	1	4GX0F0#*10K	SW-0RM/G2E	0F
1/3	1	3	3	5	5	13	2	4GX0G0#*11K	SW-05RM/G2E	0G
1	2	5	5	7 1/2	7 1/2	20	1	4GX0Q0#*10K	SW-4-0RM/G2E	0Q
1	2	5	5	10	10	20	1	4GX0R0#*10K	SW-4-1RM/G2E	0R
1	2	5	5	10	10	20	2	4GX0H0#*11K	SW-5-1RM/G2E	0H

Note: The list above indicates the No. of auxiliary contacts provided per contactor.

EXPLANATION OF PART NUMBER SYSTEM

4 G W 0 A 0 # * 1 0 K

• **PRODUCT LINE**
4=Orange Line

• **OPERATION**
N=AC Coil
G=DC Coil

• **DESCRIPTION**
W=Non-Reversing Motor Starter
X=Reversing Motor Starter

• **FRAME SIZE**

• **FRAME ENCLOSURE**
0=Open Frame, No Enclosure

• **OVERLOAD TYPE**
K=Open Phase Protection
offered as a standard

• **QUANTITY OF N.C. AUX. CONTACTS**

• **QUANTITY OF N.O. AUX. CONTACTS**

• **OVERLOAD RANGE**
Select appropriate letter from chart
on next page

• **COIL VOLTAGE**
Select code from chart on next page

"ORANGE LINE" AC Motor Starters, DC Operated

AVAILABLE COILS

Code Letter	DC Coil
T	12V
M	24V
N	48V
1	100V
R	110V
2	200V
S	220V

COIL CHARACTERISTICS

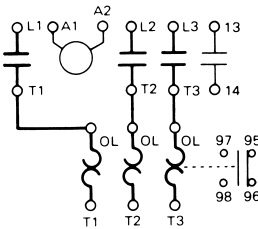
Frame Size	Power Consumption (VA)		Pick-up Voltage (V)	Drop-out Voltage (V)	Operating Time (ms)	
	Inrush	Sealed			Coil ON ↓ Contact ON	Coil OFF ↓ Contact OFF
0A	7	7	11-15	3-6	43-47	22-24
0F	7	7	11-15	3-6	43-47	22-24
0G	7	7	10-15	3-7	43-47	22-24
0Q	7	7	11-15	3-7	44-48	22-25
0R	7	7	11-15	3-7	44-48	22-25
0H	7	7	11-16	4-7	45-49	22-26

This data is based on 24-26VDC coil, tested at 24VDC.

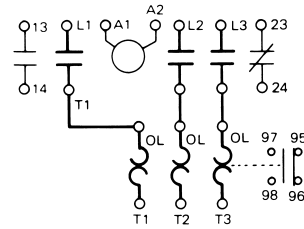
WIRING DIAGRAMS / AUXILIARY CONTACT INFORMATION

NON-REVERSING MOTOR STARTERS

(4NW0A0, 0F0, 0Q0 and 0R0)*

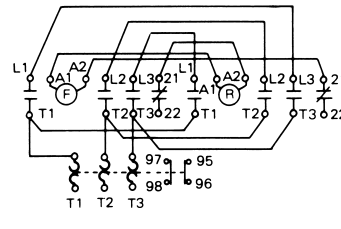


(4GW0G0 and 0H0)**

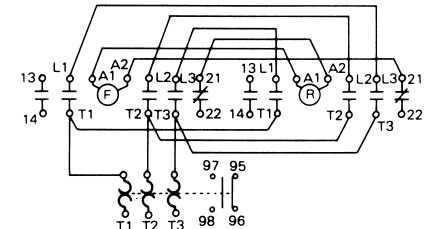


REVERSING MOTOR STARTERS

(4GX0A0, 0F0, 0Q0, 0R0)***



(4GX0G0, 0H0)***



AUXILIARY CONTACT RATINGS

Operating	Contact rating code designation	Continuous ampere rating	Current-Make/Break (A)			
			110 to 120V	220 to 240V	440 to 480V	550 to 600V
AC	A600	10	60/6	30/3	15/1.5	12/1.2
DC	Q300	10	120V	240V		
			0.55/0.55	0.27/0.27		

- * The 0A, 0F, 0Q & 0R frames offer 1 Aux. contact, NO standard. However, NC is available as an option.
- ** The 0G & 0H frames offer 2 Aux. contacts, 1NO + 1NC standard. However, 2NO or 2NC is available as an option.
- *** Reversing contactors are NOT pre-wired with an electrical interlock unless requested when ordered. Reversing contactors without at least 1NC Aux. contact can not be electrically interlocked.

OVERLOAD RANGES

Code	Range	Code	Range	Code	Range	Code	Range	Code	Range
A	0.1-0.15	E	0.48-0.72	J	1.4-2.2	N	4-6	T†	9-13
B	0.15-0.24	F	0.64-0.96	K	1.7-2.6	P	5-8	V†	12-18
C	0.24-0.36	G	0.8-1.2	L	2.2-3.4	Q	6-9		
D	0.36-0.54	H	0.95-1.45	M	2.8-4.2	S	7-11		

† These codes (T & V) are not available on frame sizes 0A, 0F, or 0G. They can be specified for use on frame sizes 0Q, 0R, & 0H only.

ORDERING INFORMATION

1. Select the basic part number from the previous page.
2. Replace the # mark with the appropriate coil code from the chart above.
3. Replace the * mark with the appropriate overload code from the chart above.
4. Verify the desired auxiliary contact arrangement.