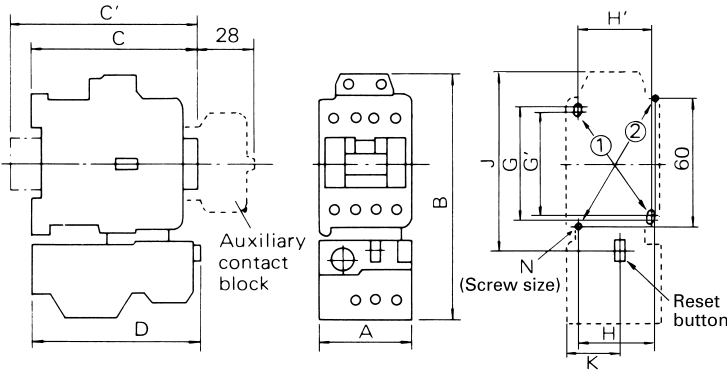


"ORANGE LINE" AC Motor Starters, DC Operated

■ NON-REVERSING MOTOR STARTERS/OPEN TYPE Approximate Dimensions, mm

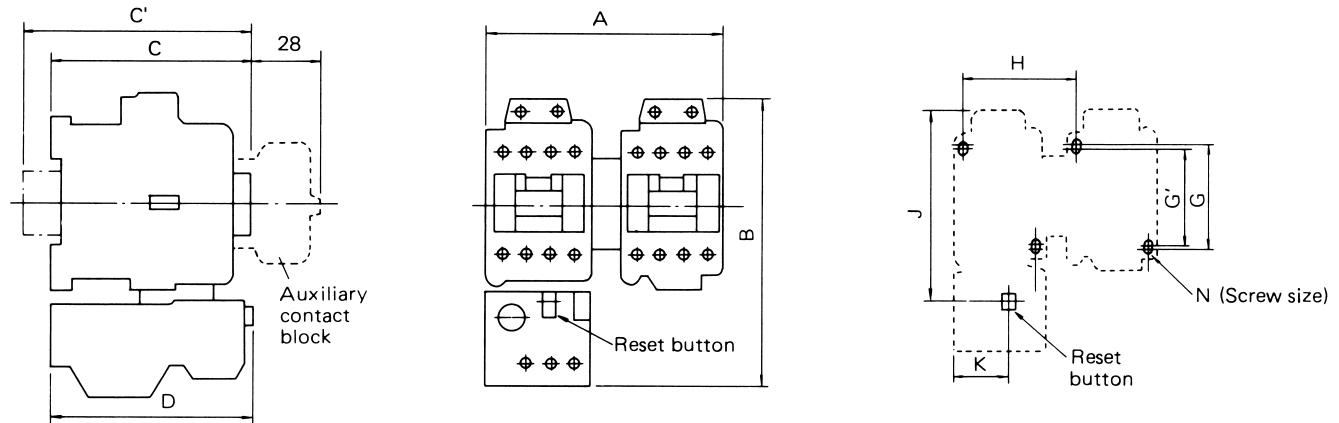
FIG.1 (4GW0A0 through 4GW0H0)



U.S. CAT. No.	Fuji Type	Fig. No.	Dimensions, mm											Net Weight (kg)		
			A	B	C	C'	D	F	G	G'	H	H'	J		K	N
4GW0A0	SW-03/G 2E	1	44	120	110	120	81	60	52	48	35	34	90	26.5	2-M4	0.66
4GW0F0	SW-0/G 2E	1	44	120	110	120	81	60	52	48	35	34	90	26.5	2-M4	0.66
4GW0G0	SW-05/G 2E	1	53	120	110	120	81	60	52	48	35	34	90	35.5	2-M4	0.69
4GW0Q0	SW-4-0/G 2E	1	53	126	111	121	81	60	52	48	35	34	93	26.5	2-M4	0.72
4GW0R0	SW-4-1/G 2E	1	53	126	111	121	81	60	52	48	35	34	93	26.5	2-M4	0.72
4GW0H0	SW-5-1/G 2E	1	64	126	111	121	81	60	60	56	50	54	93	37.5	2-M4	0.74

■ REVERSING MOTOR STARTERS/OPEN TYPE Approximate Dimensions, mm

FIG.2 (4GX0A0 through 4GX0H0)



U.S. CAT. No.	Fuji Type	Fig. No.	Dimensions, mm											Net Weight (kg)
			A	B	C	C'	D	G	G'	H	J	K	N	
4GX0A0	SW-03RM/G 2E	2	100	120	110	120	81	52	48	56	90	26.5	4-M4	1.24
4GX0F0	SW-0RM/G 2E	2	100	120	110	120	81	52	48	56	90	26.5	4-M4	1.24
4GX0G0	SW-05RM/G 2E	2	119	120	110	120	81	52	48	66	90	35.5	4-M4	1.30
4GX0Q0	SW-4-0RM/G 2E	2	119	120	111	121	81	52	48	66	93	26.5	4-M4	1.40
4GX0R0	SW-4-1RM/G 2E	2	119	120	111	121	81	52	48	66	93	26.5	4-M4	1.40
4GX0H0	SW-5-1RM/G 2E	2	141	120	111	121	81	60	56	77	93	37.5	4-M4	1.42