

# "ORANGE LINE" AC Motor Starters, AC Operated



## ■ NON-REVERSING MOTOR STARTERS UL File No. E42419, E44592 CSA File No. LR20479

1 Phase Ratings		3 Phase Ratings				AC1	Qty. of Auxiliary Contacts	Part Number	Fuji Type	Frame Size
120	240	200 208	220 240	440 480	550 600					
1/3	1	2	2	5	5	11	1	4NW0A0#*10K	SW-03/2E	0A
1/3	1	3	3	5	5	13	1	4NW0F0#*10K	SW-0/2E	0F
1/3	1	3	3	5	5	13	2	4NW0G0#*11K	SW-05/2E	0G
1	2	5	5	7 1/2	7 1/2	20	1	4NW0Q0#*10K	SW-4-0/2E	0Q
1	2	5	5	10	10	20	1	4NW0R0#*10K	SW-4-1/2E	0R
1	2	5	5	10	10	20	2	4NW0H0#*11K	SW-5-1/2E	0H

## ■ REVERSING MOTOR STARTERS UL File No. E42419, E44592 CSA File No. LR20479

1 Phase Ratings		3 Phase Ratings				AC1	Qty. of Auxiliary Contacts	Part Number	Fuji Type	Frame Size
120	240	200 208	220 240	440 480	550 600					
1/3	1	2	2	5	5	11	1	4NX0A0#*10K	SW-03RM/2E	0A
1/3	1	3	3	5	5	13	1	4NX0F0#*10K	SW-0RM/2E	0F
1/3	1	3	3	5	5	13	2	4NX0G0#*11K	SW-05RM/2E	0G
1	2	5	5	7 1/2	7 1/2	20	1	4NX0Q0#*10K	SW-4-0RM/2E	0Q
1	2	5	5	10	10	20	1	4NX0R0#*10K	SW-4-1RM/2E	0R
1	2	5	5	10	10	20	2	4NX0H0#*11K	SW-5-1RM/2E	0H

Note: The list above indicates the No. of auxiliary contacts provided per contactor.

### EXPLANATION OF PART NUMBER SYSTEM

**4 N W 0 A 0 # \* 1 0 K**

• **PRODUCT LINE**  
4=Orange Line

• **OPERATION**  
N=AC Coil  
G=DC Coil

• **DESCRIPTION**  
W=Non-Reversing Motor Starter  
X=Reversing Motor Starter

• **FRAME SIZE**

• **FRAME ENCLOSURE**  
0=Open Frame, No Enclosure

• **OVERLOAD TYPE**  
K=Open Phase Protection  
offered as a standard

• **QUANTITY OF N.C. AUX. CONTACTS**

• **QUANTITY OF N.O. AUX. CONTACTS**

• **OVERLOAD RANGE**  
Select appropriate letter from chart  
on next page

• **COIL VOLTAGE**  
Select code from chart on next page

# "ORANGE LINE" AC Motor Starters, AC Operated

## AVAILABLE COILS

Code Letter	AC Coil 60Hz	AC Coil 50Hz
E	24-26V	24V
F	48-52V	48V
A	100-110V	100V
1	110-120V	100-110V
G	120-130V	110-120V
B	200-220V	200V
2	220-240V	200-220V
C	400-440V	380-400V
4	440-480V	415-440V
5	550-600V	500-550V

## COIL CHARACTERISTICS

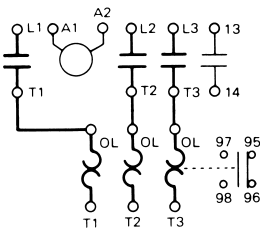
Frame Size	Power Consumption (VA)	Pick-up Voltage (V)	Drop-out Voltage (V)	Operating Time (ms)		
				Coil ON	Coil OFF	
Inrush Sealed				Contact ON	Contact OFF	
0A	95	9	58-68	40-55	9-20	5-16
0F	95	9	58-68	40-55	9-20	5-16
0G	95	9	58-68	40-55	9-20	5-16
0Q	95	9	65-73	44-60	9-20	5-16
0R	95	9	65-73	44-60	9-20	5-16
0H	95	9	65-73	44-60	9-20	5-16

This data is based on 110-120Vac, 50/60Hz coil, tested at 120Vac, 60Hz.

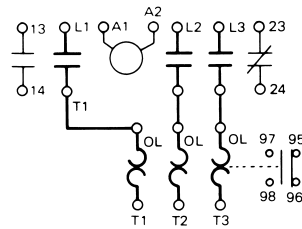
## WIRING DIAGRAMS / AUXILIARY CONTACT INFORMATION

### NON-REVERSING MOTOR STARTERS

(4NW0A0, 0F0, 0Q0 and 0R0)\*

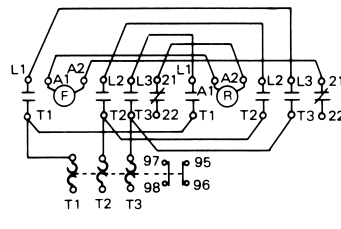


(4NW0G0 and 0H0)\*\*

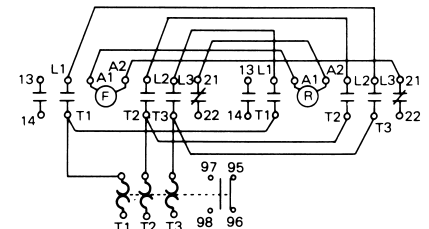


### REVERSING MOTOR STARTERS

(4NX0A0, 0F0, 0Q0, 0R0)\*\*\*



(4NX0G0, 0H0)\*\*\*



- \* The 0A, 0F, 0Q & 0R frames offer 1 Aux. contact, NO standard. However, NC is available as an option.
- \*\* The 0G & 0H frames offer 2 Aux. contacts, 1NO + 1NC standard. However, 2NO or 2NC is available as an option.
- \*\*\* Reversing starters are NOT pre-wired with an electrical interlock unless requested when ordered. Reversing starters without at least 1NC Aux. contact can not be electrically interlocked.

### AUXILIARY CONTACT RATINGS

Operating	Contact rating Code Designation	Continuous Ampere Rating	Current-Make/Break (A)			
			110 to 120V	220 to 240V	440 to 480V	550 to 600V
AC	A600	10	60/6	30/3	15/1.5	12/1.2
DC	Q300	10	120V	240V		
			0.55/0.55	0.27/0.27		

## OVERLOAD RANGES

Code	Range	Code	Range	Code	Range	Code	Range	Code	Range
A	0.1-0.15	E	0.48-0.72	J	1.4-2.2	N	4-6	T†	9-13
B	0.15-0.24	F	0.64-0.96	K	1.7-2.6	P	5-8	V†	12-18
C	0.24-0.36	G	0.8-1.2	L	2.2-3.4	Q	6-9		
D	0.36-0.54	H	0.95-1.45	M	2.8-4.2	S	7-11		

† These codes (T & V) are not available on frame sizes 0A, 0F, or 0G. They can be specified for use on frame sizes 0Q, 0R, & 0H only.

## ORDERING INFORMATION

1. Select the basic part number from the previous page.
2. Replace the # mark with the appropriate coil code from the chart above.
3. Replace the \* mark with the appropriate overload code from the chart above.
4. Verify the desired auxiliary contact arrangement.