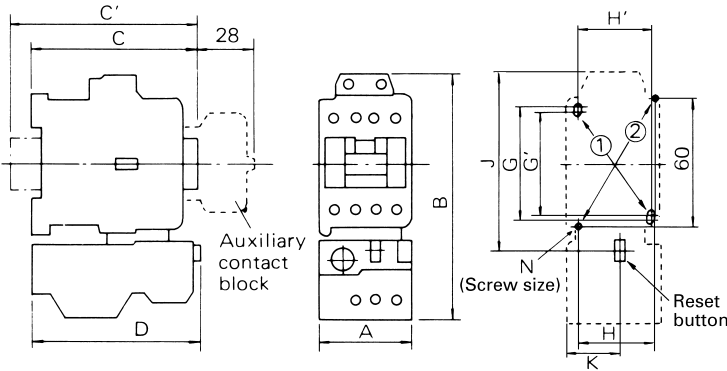


# "ORANGE LINE" AC Motor Starters, AC Operated

## ■ NON-REVERSING MOTOR STARTERS/OPEN TYPE Approximate Dimensions, mm

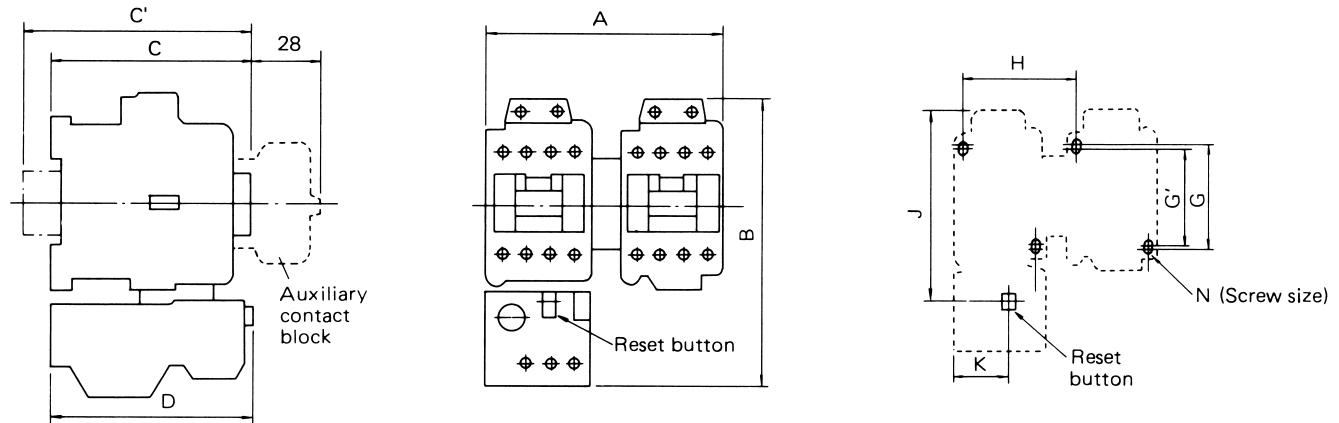
FIG.1 (4NW0A0 through 4NW0H0)



U.S. CAT. No.	Fuji Type	Fig. No.	Dimensions, mm											Net Weight (kg)		
			A	B	C	C'	D	F	G	G'	H	H'	J		K	N
4NW0A0	SW-03/2E	1	44	120	80	90	81	60	52	48	35	34	90	26.5	2-M4	0.43
4NW0F0	SW-0/2E	1	44	120	80	90	81	60	52	48	35	34	90	26.5	2-M4	0.43
4NW0G0	SW-05/2E	1	53	120	80	90	81	60	52	48	35	34	90	35.5	2-M4	0.45
4NW0Q0	SW-4-0/2E	1	53	126	81	91	81	60	52	48	35	34	93	26.5	2-M4	0.47
4NW0R0	SW-4-1/2E	1	53	126	81	91	81	60	52	48	35	34	93	26.5	2-M4	0.47
4NW0H0	SW-5-1/2E	1	64	126	81	91	81	60	60	56	50	54	93	37.5	2-M4	0.5

## ■ REVERSING MOTOR STARTERS/OPEN TYPE Approximate Dimensions, mm

FIG.2 (4NX0A0 through 4NX0H0)



U.S. CAT. No.	Fuji Type	Fig. No.	Dimensions, mm											Net Weight (kg)
			A	B	C	C'	D	G	G'	H	J	K	N	
4NX0A0	SW-03RM/2E	2	100	120	80	90	81	52	48	56	90	26.5	4-M4	0.79
4NX0F0	SW-0RM/2E	2	100	120	80	90	81	52	48	56	90	26.5	4-M4	0.79
4NX0G0	SW-05RM/2E	2	119	120	80	90	81	52	48	66	90	35.5	4-M4	0.83
4NX0Q0	SW-4-0RM/2E	2	119	126	81	91	81	52	48	66	93	26.5	4-M4	0.87
4NX0R0	SW-4-1RM/2E	2	119	126	81	91	81	52	48	66	93	26.5	4-M4	0.87
4NX0H0	SW-5-1RM/2E	2	141	126	81	91	81	60	56	77	93	37.5	4-M4	0.92