

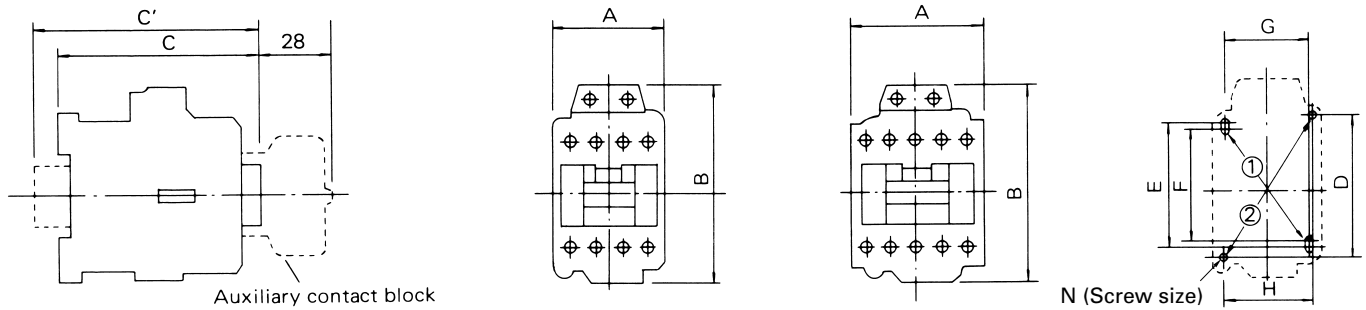
# "ORANGE LINE" AC Contactors, DC Operated

## ■ NON-REVERSING CONTACTORS/OPEN TYPE Approximate Dimensions, mm

FIG.1 (4GC0A0 through 4GC0H0)

4GC0A0, 0F0, 0Q0, 0R0

4GC0G0, 0H0



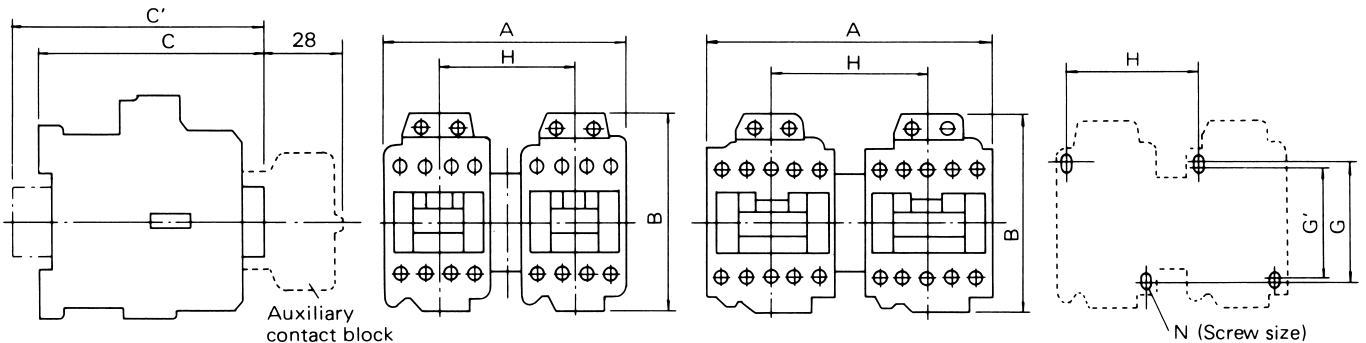
U.S. CAT. No.	Fuji Type	Fig. No.	Dimensions, mm											Net Weight (kg)
			A	B	C	C'	D	E	F	G	H	N		
4GC0A0	SC-03/G	1	43	80	110	120	60	52	48	34	35	2-M4	0.55	
4GC0F0	SC-0/G	1	43	80	110	120	60	52	48	34	35	2-M4	0.55	
4GC0G0	SC-05/G	1	53	80	110	120	60	52	48	34	35	2-M4	0.58	
4GC0Q0	SC-4-0/G	1	53	80	111	121	60	52	48	34	35	2-M4	0.6	
4GC0R0	SC-4-1/G	1	53	80	111	121	60	52	48	34	35	2-M4	0.6	
4GC0H0	SC-5-1/G	1	64	80	111	121	60	60	56	54	50	2-M4	0.62	

## ■ REVERSING CONTACTORS/OPEN TYPE Approximate Dimensions, mm

FIG.2 (4GD0A0 through 4GD0H0)

4GD0A0, 0F0, 0Q0, 0R0

4GD0G0, 0H0



U.S. CAT. No.	Fuji Type	Fig. No.	Dimensions, mm											Net Weight (kg)
			A	B	C	C'	G	G'	H	N				
4GD0A0	SC-03RM/G	2	99	80	110	120	52	48	56	4-M4	1.14			
4GD0F0	SC-0RM/G	2	99	80	110	120	52	48	56	4-M4	1.14			
4GD0G0	SC-05RM/G	2	119	80	110	120	52	48	66	4-M4	1.20			
4GD0Q0	SC-4-0RM/G	2	119	80	111	121	52	48	66	4-M4	1.24			
4GD0R0	SC-4-1RM/G	2	119	80	111	121	52	48	66	4-M4	1.24			
4GD0H0	SC-5-1RM/G	2	141	80	111	121	60	56	77	4-M4	1.28			