

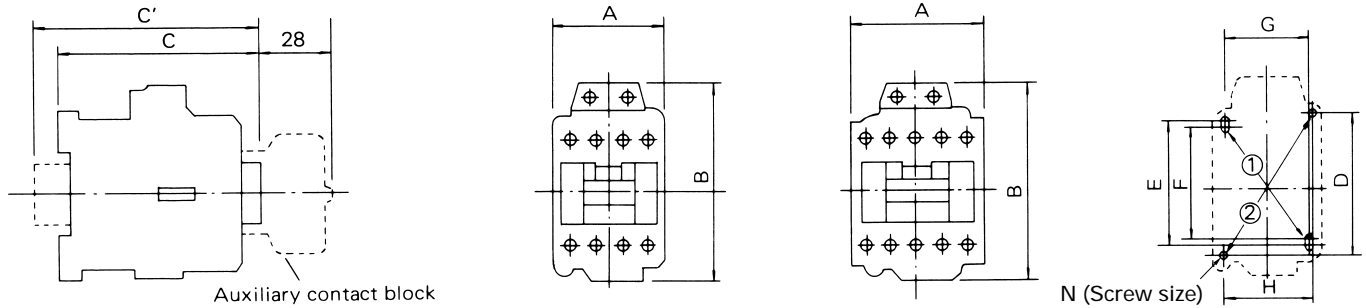
"ORANGE LINE" AC Contactors, AC Operated

■ NON-REVERSING CONTACTORS/OPEN TYPE Approximate Dimensions, mm

FIG.1 (4NC0A0 through 4NC0H0)

4NC0A0, 0F0, 0Q0, 0R0

4NC0G0, 0H0



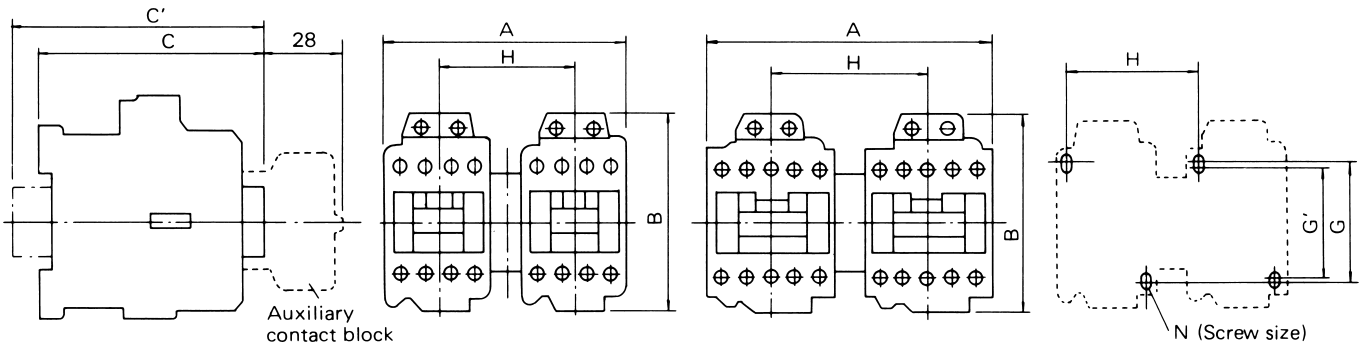
U.S. CAT. No.	Fuji Type	Fig. No.	Dimensions, mm											Net Weight (kg)
			A	B	C	C'	D	E	F	G	H	N		
4NC0A0	SC-03	1	43	80	80	90	60	52	48	34	35	2-M4	0.32	
4NC0F0	SC-0	1	43	80	80	90	60	52	48	34	35	2-M4	0.32	
4NC0G0	SC-05	1	53	80	80	90	60	52	48	34	35	2-M4	0.34	
4NC0Q0	SC-4-0	1	53	80	81	91	60	52	48	34	35	2-M4	0.36	
4NC0R0	SC-4-1	1	53	80	81	91	60	52	48	34	35	2-M4	0.36	
4NC0H0	SC-5-1	1	64	80	81	91	60	60	56	54	50	2-M4	0.38	

■ REVERSING CONTACTORS/OPEN TYPE Approximate Dimensions, mm

FIG.2 (4ND0A0 through 4ND0H0)

4ND0A0, 0F0, 0Q0, 0R0

4ND0G0, 0H0



U.S. CAT. No.	Fuji Type	Fig. No.	Dimensions, mm											Net Weight (kg)
			A	B	C	C'	G	G'	H	N				
4ND0A0	SC-03RM	2	99	80	80	90	52	48	56	4-M4	0.68			
4ND0F0	SC-0RM	2	99	80	80	90	52	48	56	4-M4	0.68			
4ND0G0	SC-05RM	2	119	80	80	90	52	48	66	4-M4	0.72			
4ND0Q0	SC-4-0RM	2	119	80	81	91	52	48	66	4-M4	0.76			
4ND0R0	SC-4-1RM	2	119	80	81	91	52	48	66	4-M4	0.76			
4ND0H0	SC-5-1RM	2	141	80	81	91	60	56	77	4-M4	0.8			