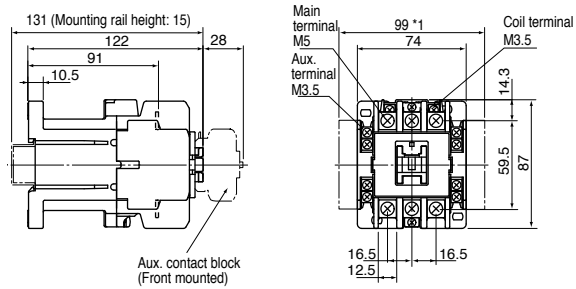


"ODYSSEY SERIES" Conventional DC Coil Contactors

■ DC OPERATED CONTACTORS/OPEN TYPE Approximate Dimensions, mm

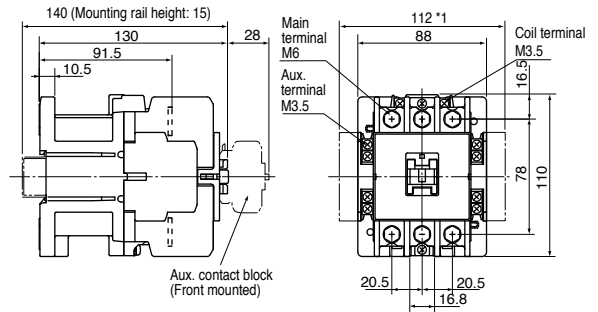
3GC0T0#22
3GC1Q0#22



* 1 Aux. contact block (Side mounted)

Weight: 0.82kg

3GC2F0#22
3GC2H0#22

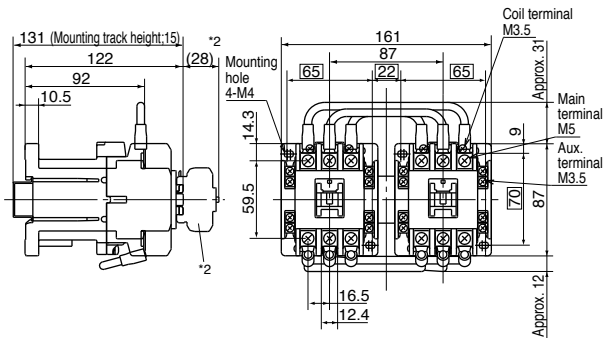


* 1 Aux. contact block (Side mounted)

Weight: 1.4kg

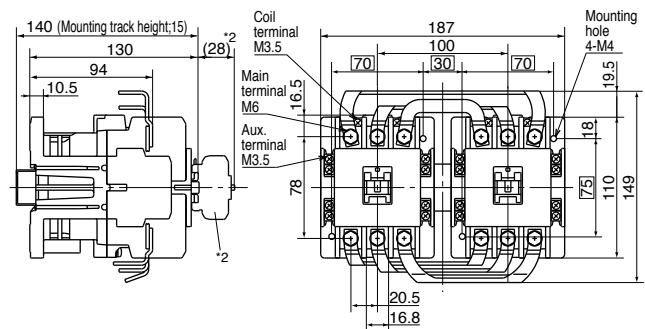
■ DC OPERATED REVERSING CONTACTORS/OPEN TYPE Approximate Dimensions, mm

3GD0T0#22
3GD1Q0#22



* 2 Aux. contact block. Front mounted (If Used)

3GD2F0#22
3GD2H0#22



* 2 Aux. contact block. Front mounted (If Used)