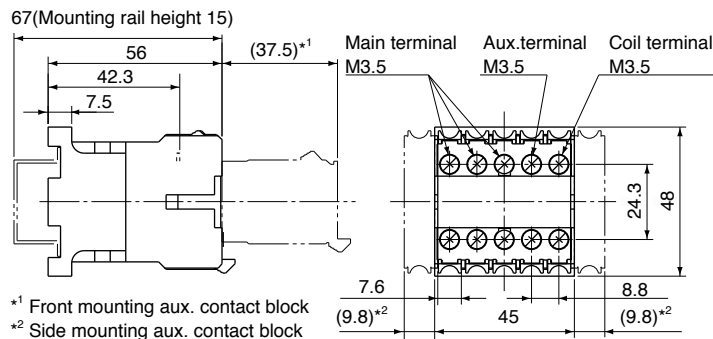


Contactors SC-M series

Dimensions

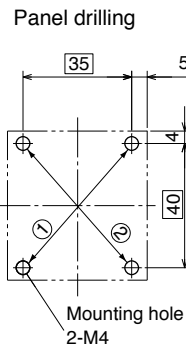
■ Dimensions, mm

• Non-reversing AC operated SC-M01, SC-M02



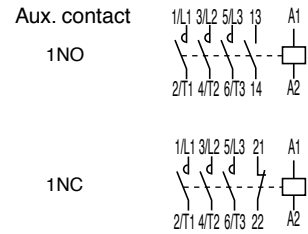
*1 Front mounting aux. contact block
*2 Side mounting aux. contact block

Mass: 0.17kg

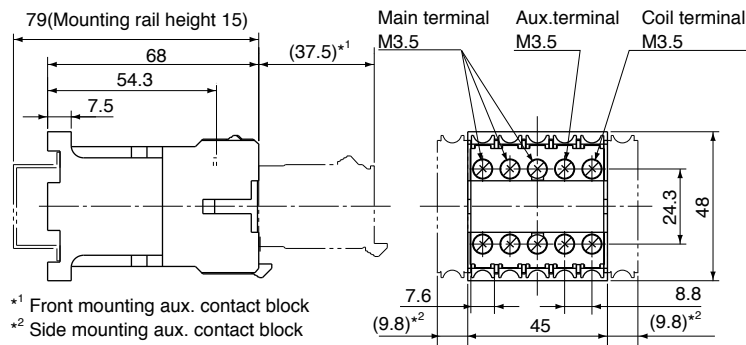


Use the two mounting holes on a diagonal line ① or ② to mount a contactor.

■ Wiring diagrams

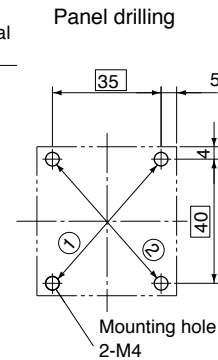


• Non-reversing DC operated SC-M01/G, SC-M02/G

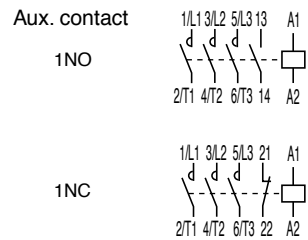


*1 Front mounting aux. contact block
*2 Side mounting aux. contact block

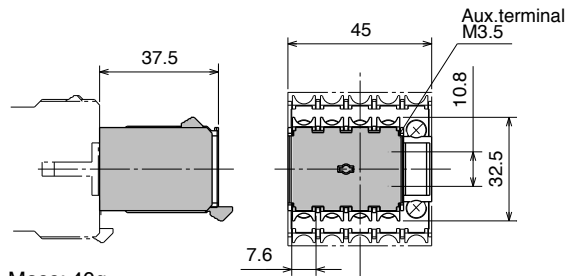
Mass: 0.23kg



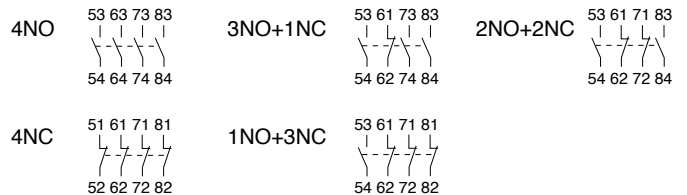
Use the two mounting holes on a diagonal line ① or ② to mount a contactor.



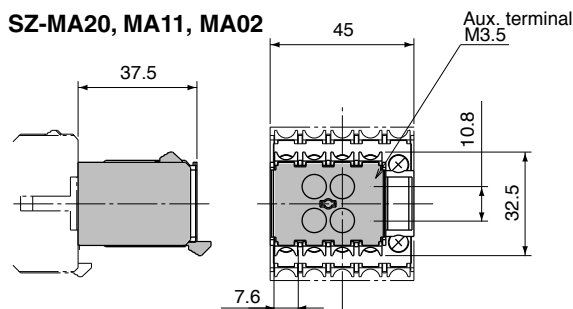
• Auxiliary contact blocks Front mounting SZ-MA40, MA31, MA22, MA13, MA04



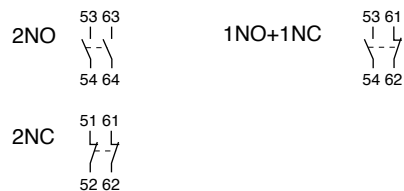
Mass: 40g



SZ-MA20, MA11, MA02



Mass: 30g

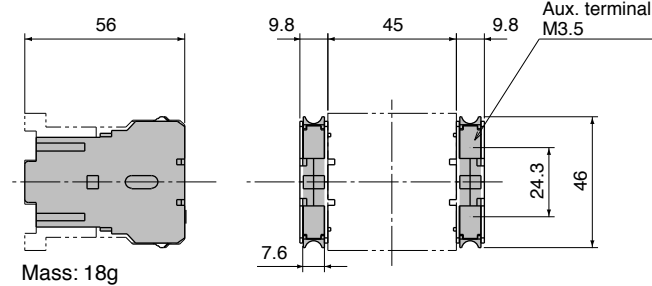


Contactors SC-M series

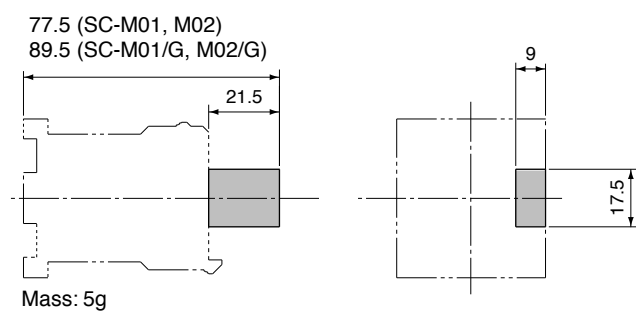
Dimensions

■ Dimensions, mm

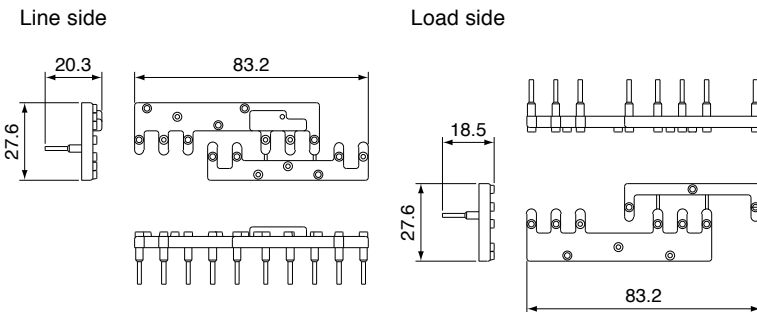
- Aux. contact blocks (Side mounting)



- Coil surge suppression unit

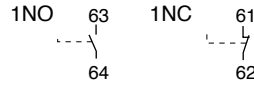


- Power Connection kit for reversing for SC-M

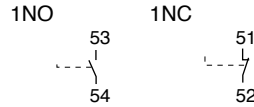


■ Wiring diagrams

- Aux. contact
- Mounted on the right side

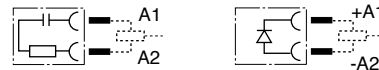


- Mounted on the left side

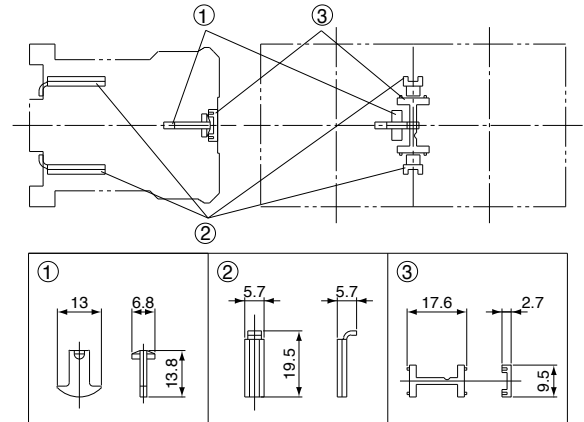


- Internal circuit

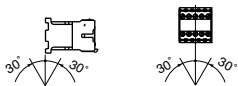
- Built-in CR
- Built-in diode



- Mechanical interlock unit



■ Standard operating conditions

| | |
|---------------------|--|
| Ambient temperature | Operating: -5 to 55°C No sudden temperature changes resulting in condensation or icing (The average temperature over a 24-hour period must not exceed 35°C) Storage: -40 to 65°C |
| Humidity | 45 to 85%RH |
| Altitude | 2000m or lower |
| Atmosphere | No excessive dust, smoke, corrosive gases, flammable gases, steam, or salt. |
| Vibration | 10 to 55Hz 15m/s ² |
| Shock | 50m/s ² |
| Mounting | Screw mounting, 35mm-wide top hat rail (DIN) |
| Mounting angle |  |
| Standard | IEC 60947-4-1, EN 60947-4-1, VDE 0660 JIS C 8201-4-1, JEM 1038 UL 508, CSA C22.2 |

■ Wiring

| | |
|---------------------------------|--|
| Terminal screw | M3.5 |
| Connectable wire size | 1.25 to 2mm ² (ø1.2 to 2mm) |
| Applicable round crimp terminal | 7.5mm (R2-3.5) |
| Tightening torque | 0.8 to 1.0N·m |