

To All Customers

Fuji Electric FA Components & Systems Co., Ltd.

Air Load Break Switch LBS Series Notice of Changing Open/Close Mechanism

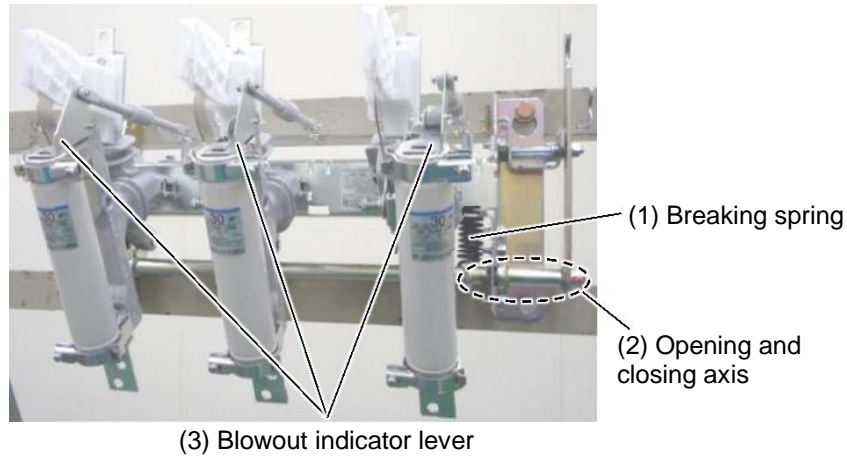
We would like to thank you for your continued patronage of Fuji products.

We will be changing some products as described below. Please review the following information and take appropriate actions.

Please inform all related sections of your company.

Product name	Air load break switch
Series and series name	LBS series
Types	LBS-6A/200 LBS-6A/200F LBS-6A/200C LBS-6A/200FC LBS-6A/210 LBS-6A/210F * Other applicable types will also be changed.
Changed parts	Open/close mechanism (Switchgear)
Description	The open/close mechanism will be changed as follows: (1) The handle operating force will be relieved by reducing the load of the breaking spring by 20% compared with previous products. (2) The shape of coupling hole for the blowout indicator lever will be changed from a round to elongated hole. (3) The welding method of the opening and closing axis will be changed from full-circled welding to partial welding. * See the attachment for details.
Reason for change	In order to improve assembly performance.
Date of production change	Changed products are scheduled to be produced from July 2015.
Attachments	1. New and Old Comparison of Open/Close Mechanisms for LBS Series
Notes concerning the change	The other performances, operability, and outline dimensions of products will not be changed.

Attachment 1: “New and Old Comparison of Open/Close Mechanisms LBS Series”



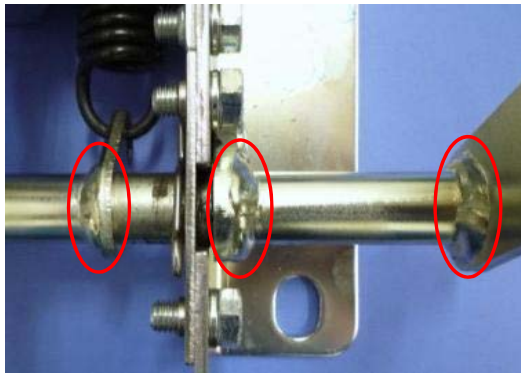
(1) Load of breaking spring

- The handle operating force will be reduced by about 20% compared with previous products by reducing the load of the breaking spring.
- * This change does not have any impact on open/close performance.

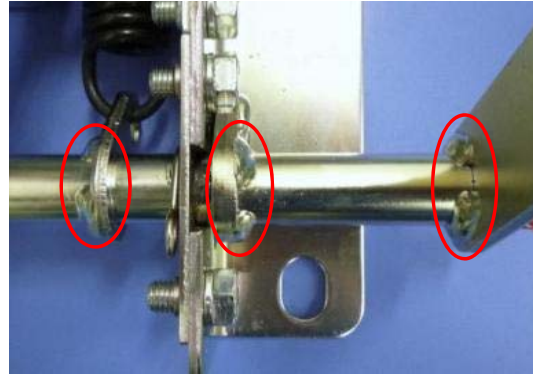
(2) How to weld opening and closing axis

- The welding method for the opening and closing axis will be changed from full-circled welding to partial welding.
- * This change does not have any effect on the strength of the weld zone and open/close performance.

Enlarged picture of area circled with dotted line above



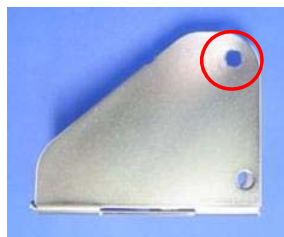
<Before change>



<After change>

(3) Hole shape of blowout indicator lever

- The hole shape will be changed from a round to elongated hole.
- * This change does not have any effect on open/close performance.



<Before change>



<After change>